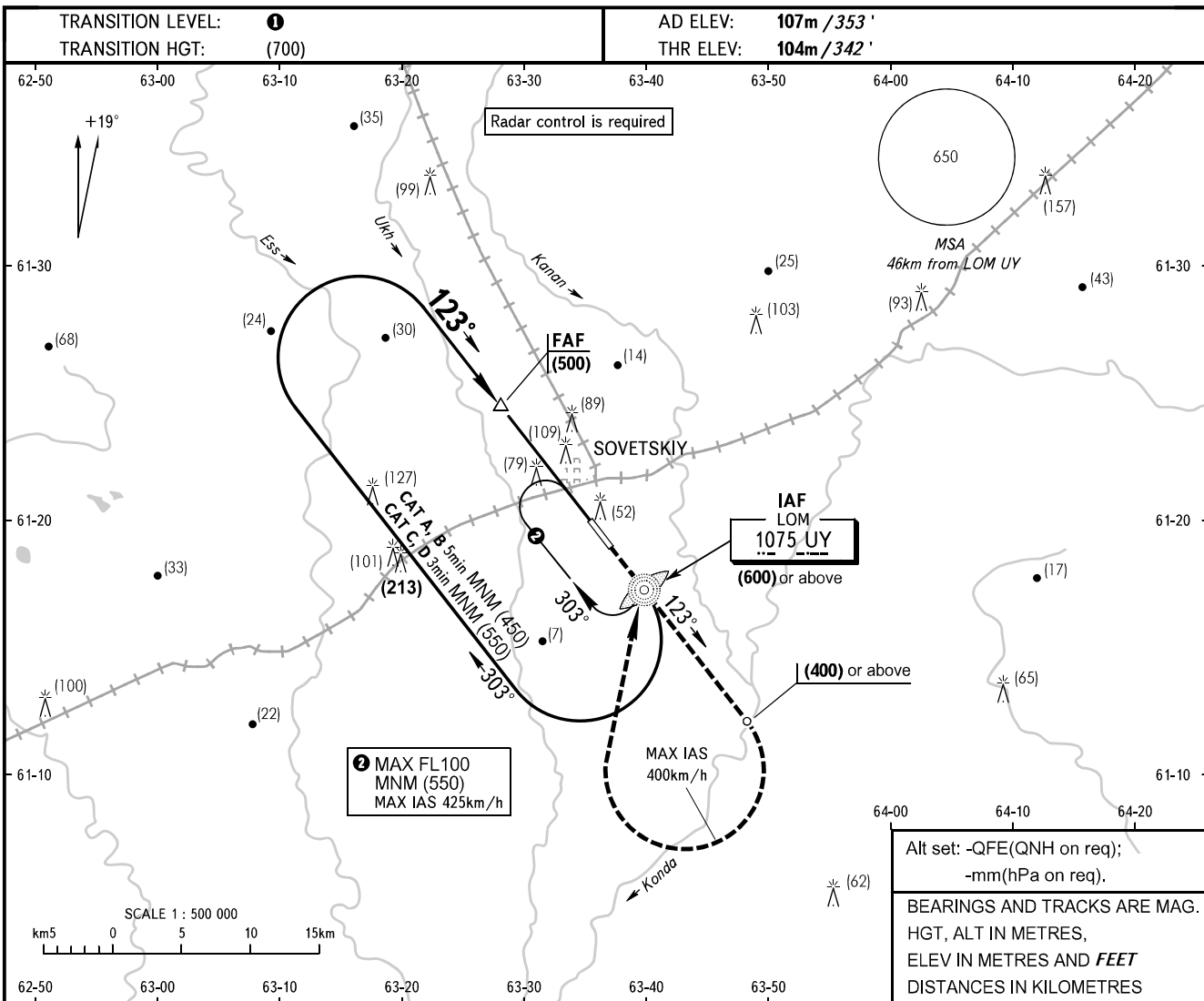


**INSTRUMENT
APPROACH
CHART - ICAO**

SOVETSKIY TOWER 120.800

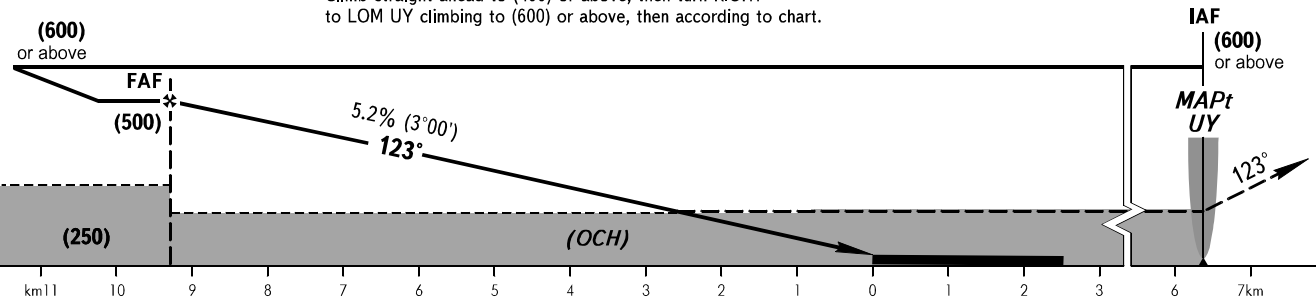
SOVETSKIY, RUSSIA
SOVETSKIY
NDB Y RWY 12



FAF is fixed by TAR (DIST 10.5km).

MISSED APPROACH

Climb straight ahead to (400) or above, then turn RIGHT to LOM UY climbing to (600) or above, then according to chart.



OCA(H)		A	B	C	D
Straight-in	Approach	290(185)	290(185)	290(185)	290(185)
	Circling	290(185)	305(200)	335(230)	335(230)

1 TRANSITION LEVEL:
 - FL040 when QFE is 750mm mercury column or above;
 - FL050 when QFE is 723mm mercury column or above, but less than 750mm mercury column.
 - FL060 when QFE is less than 723mm mercury column.
 Visual manoeuvring over the city is PROHIBITED.

GROUND SPEED	km/h	120	150	180	210	240	270	300	330	360	390	420	450
FAF-MAPt 15700m	min:sec	7:50	6:16	5:13	4:28	3:55	3:29	3:08	2:51	2:37	2:25	2:14	2:05
RATE OF DESCENT	m/s	1.7	2.2	2.6	3.1	3.5	3.9	4.4	4.8	5.2	5.7	6.1	6.6