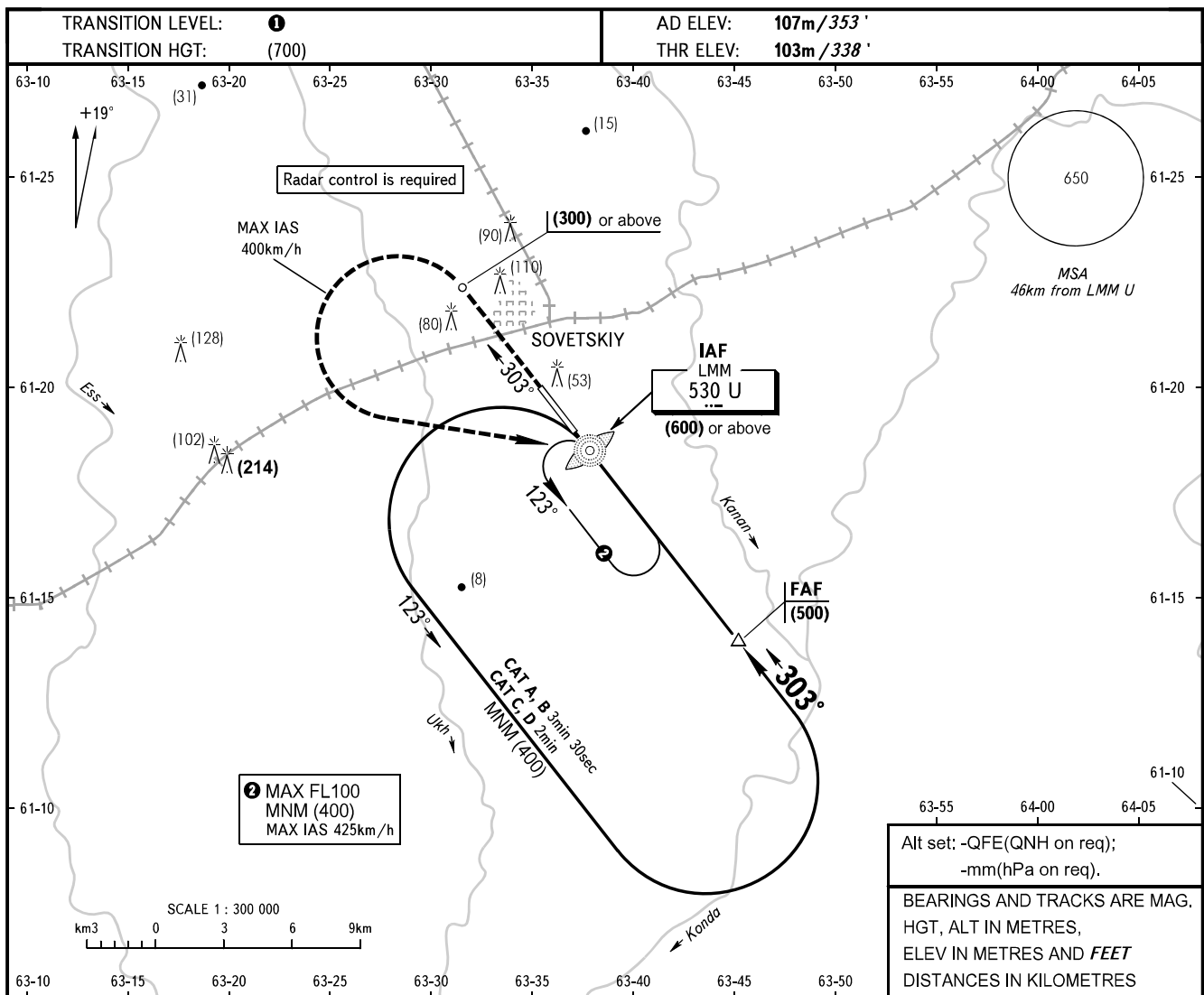


INSTRUMENT
APPROACH
CHART - ICAO

SOVETSKIY TOWER 120.800

SOVETSKIY, RUSSIA
SOVETSKIY
NDB Z RWY 30



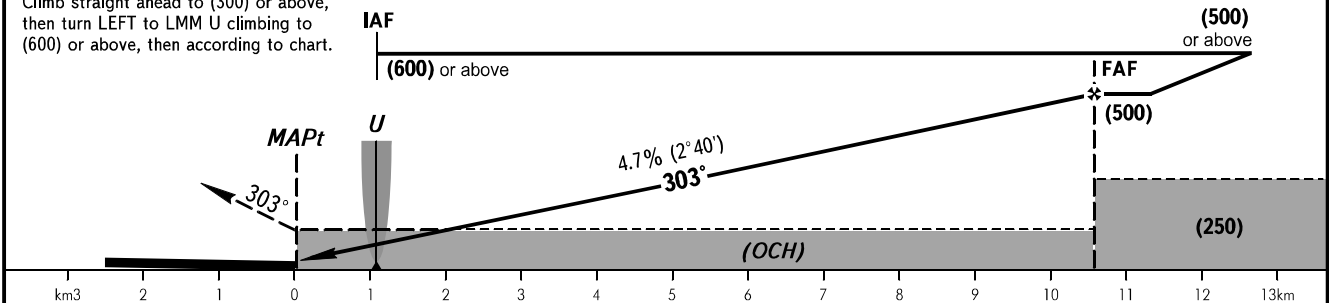
2 MAX FL100
MNM (400)
MAX IAS 425km/h

Alt set: -QFE(QNH on req);
-mm(hPa on req).
BEARINGS AND TRACKS ARE MAG.
HGT, ALT IN METRES,
ELEV IN METRES AND FEET
DISTANCES IN KILOMETRES

MISSED APPROACH

Climb straight ahead to (300) or above, then turn LEFT to LMM U climbing to (600) or above, then according to chart.

FAF is fixed by TAR (DIST 11.7).



OCA(H)		A	B	C	D
Straight-in	Approach	210(105)	210(105)	210(105)	210(105)
	Approach				
Circling		250(140)	305(200)	335(230)	335(230)

1 TRANSITION LEVEL:
- FL040 when QFE is 750mm mercury column or above;
- FL050 when QFE is 723mm mercury column or above, but less than 750mm mercury column.
- FL060 when QFE is less than 723mm mercury column.
Visual manoeuvring over the city is PROHIBITED.

GROUND SPEED	km/h	120	150	180	210	240	270	300	330	360	390	420	450
FAF-MAPt 10400m	min:sec	5:12	4:10	3:28	2:59	2:36	2:19	2:05	1:54	1:44	1:36	1:29	1:23
RATE OF DESCENT	m/s	1.5	1.9	2.3	2.7	3.1	3.5	3.9	4.3	4.6	5.0	5.4	5.8