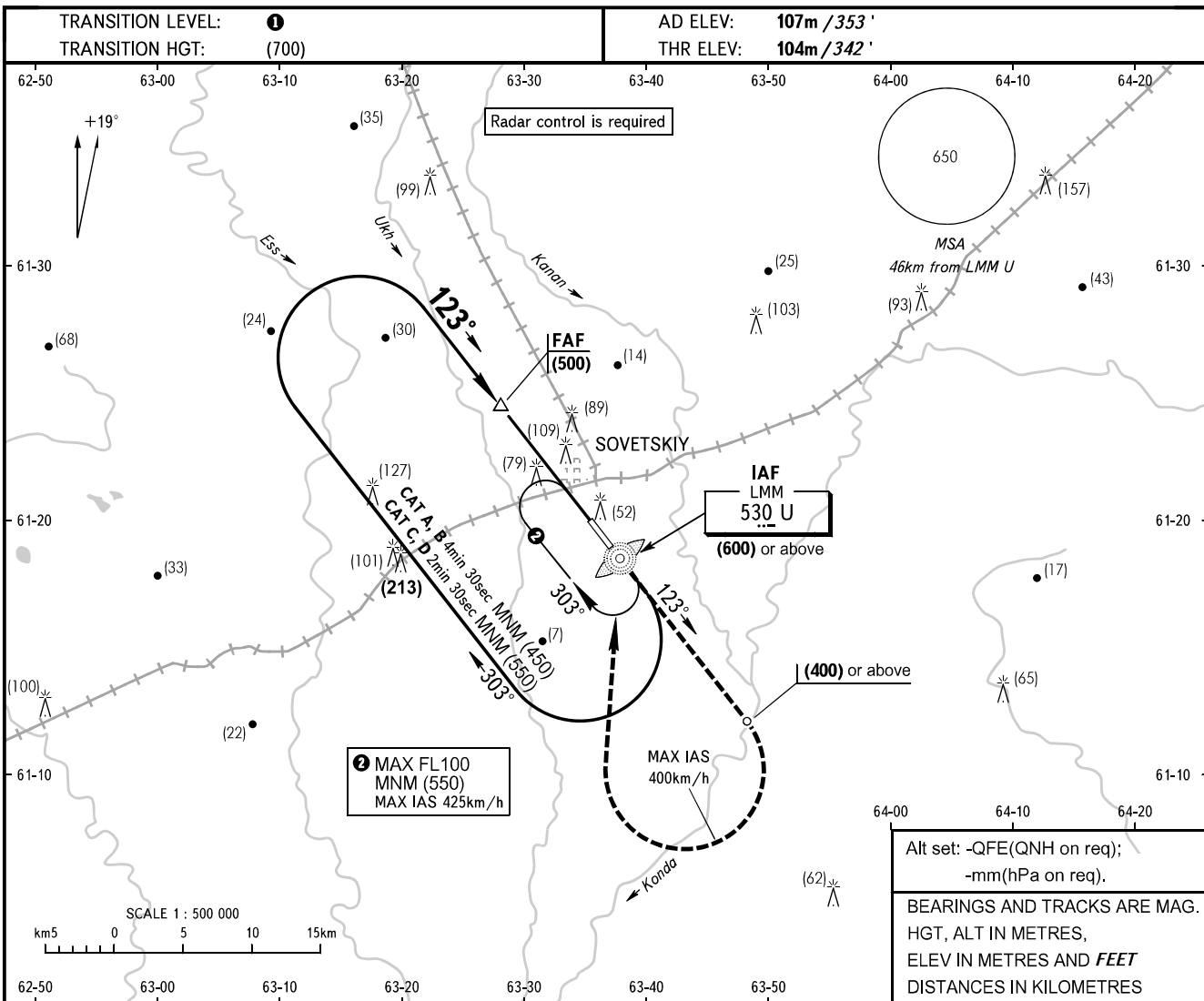


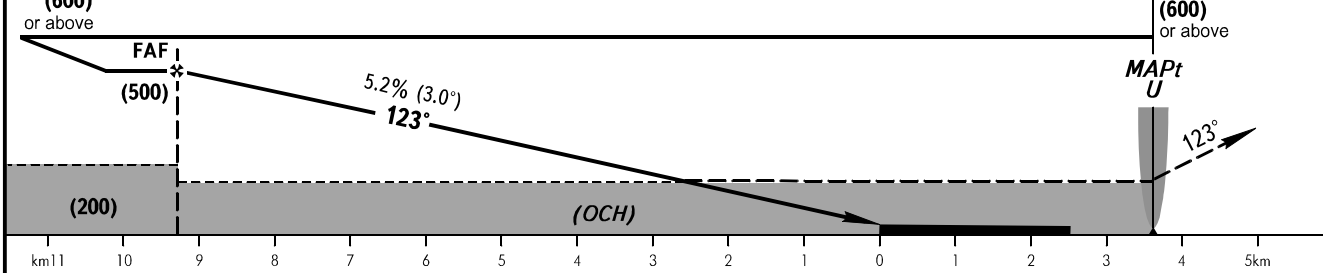
**INSTRUMENT
APPROACH
CHART - ICAO**

SOVETSKIY TOWER **120.800**

SOVETSKIY, RUSSIA
SOVETSKIY
NDB Z RWY 12



FAF is fixed by TAR (DIST 10.5). **MISSED APPROACH**
Climb straight ahead to (400) or above, then turn RIGHT to LMM U climbing to (600) or above, then according to chart.



OCA(H)		A	B	C	D
Straight-in	Approach	290(185)	290(185)	290(185)	290(185)
	Circling	290(185)	305(200)	335(230)	335(230)

1 TRANSITION LEVEL:
- FL040 when QFE is 750mm mercury column or above;
- FL050 when QFE is 723mm mercury column or above, but less than 750mm mercury column.
- FL060 when QFE is less than 723mm mercury column.
Visual manoeuvring over the city is PROHIBITED.

GROUND SPEED	km/h	120	150	180	210	240	270	300	330	360	390	420	450
FAF-MAPt 12800m	min:sec	6:24	5:07	4:16	3:39	3:12	2:51	2:34	2:20	2:08	1:58	1:50	1:42
RATE OF DESCENT	m/s	1.7	2.2	2.6	3.1	3.5	3.9	4.4	4.8	5.2	5.7	6.1	6.6

CHANGE: New chart