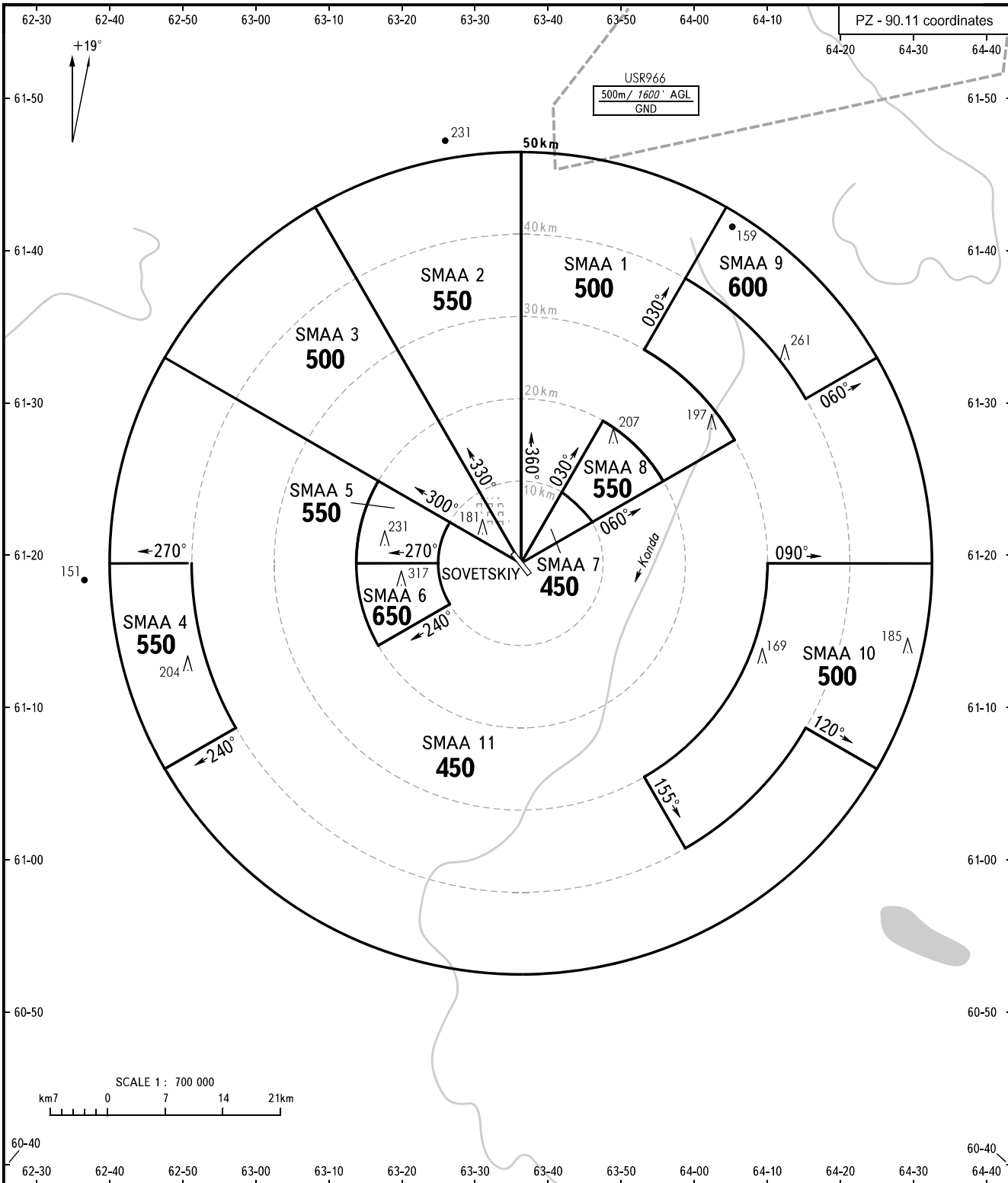


ATC SURVEILLANCE MINIMUM
ALTITUDE CHART - ICAO

ELEV 107m/353'
TRANSITION HEIGHT: (700)

SOVETSKIY, RUSSIA
SOVETSKIY



SOVETSKIY TOWER 120 800

WARNING:

1. AZM and DIST are given from ARP (61 19 28N 063 36 16E).
 2. When vectoring is carried out under low-temperature conditions, minimum vectoring altitudes for IFR flight must be corrected by altimeter temperature correction.
- The chart may only be used for cross-checking of altitudes assigned while the aircraft is identified under radar control.

BEARINGS AND TRACKS ARE MAGNETIC
ALTITUDES, HEIGHTS AND ELEVATIONS ARE IN METRES
DISTANCES ARE IN KILOMETRES

Alt set: -QFE(QNH on req);
-mm(hPa on req).

SOVETSKIY, RUSSIA
SOVETSKIY

SURVEILLANCE MINIMUM ALTITUDE AREAS		
IDENT	MNM ALT, (m)	LATERAL LIMITS (PZ-90.11 coordinates)
SMAA 1	500	611928N 0633616E, 614623N 0633616E, then clockwise by arc of a circle radius of 50 km centred at 611928N 0633616E to 614244N 0640437E, 613326N 0635312E, then clockwise by arc of a circle radius of 30 km centred at 611928N 0633616E to 612729N 0640530E, 612450N 0635541E, then anticlockwise by arc of a circle radius of 20 km centred at 611928N 0633616E, 612847N 0634731E, 611928N 0633616E.
SMAA 2	550	611928N 0633616E, 614244N 0630754E, then clockwise by arc of a circle radius of 50 km centred at 611928N 0633616E to 614623N 0633616E, 611928N 0633616E.
SMAA 3	500	611928N 0633616E, 613247N 0624725E, then clockwise by arc of a circle radius of 50 km centred at 611928N 0633616E to 614244N 0630754E, 611928N 0633616E.
SMAA 4	550	610836N 0625740E, 610552N 0624806E, then clockwise by arc of a circle radius of 50 km centred at 611928N 0633616E to 611916N 0624015E, 611921N 0625127E, then anticlockwise by arc of a circle radius of 40 km centred at 611928N 0633616E to 610836N 0625740E.
SMAA 5	550	611928N 0632503E, 611926N 0631351E, then clockwise by arc of a circle radius of 20 km centred at 611928N 0633616E to 612450N 0631648E, 612209N 0632633E, then anticlockwise by arc of a circle radius of 10 km centred at 611928N 0633616E, 611928N 0632503E.
SMAA 6	650	611646N 0632634E, 611404N 0631655E, then clockwise by arc of a circle radius of 20 km centred at 611928N 0633616E to 611926N 0631351E, 611928N 0632503E, then anticlockwise by arc of a circle radius of 10 km centred at 611928N 0633616E to 611646N 0632634E.
SMAA 7	450	611928N 0633616E, 612408N 0634153E, then clockwise by arc of a circle radius of 10 km centred at 611928N 0633616E to 612209N 0634559E, 611928N 0633616E.
SMAA 8	550	612408N 0634153E, 612847N 0634731E, then clockwise by arc of a circle radius of 20 km centred at 611928N 0633616E to 612450N 0635541E, 612209N 0634559E, then anticlockwise by arc of a circle radius of 10 km centred at 611928N 0633616E, 612408N 0634153E.
SMAA 9	600	613805N 0635854E, 614244N 0640437E, then clockwise by arc of a circle radius of 50 km centred at 611928N 0633616E to 613247N 0642507E, 613009N 0641518E, then anticlockwise by arc of a circle radius of 40 km centred at 611928N 0633616E, 613805N 0635854E.
SMAA 10	500	611924N 0640952E, 611916N 0643216E, then clockwise by arc of a circle radius of 50 km centred at 611928N 0633616E to 610552N 0642424E, 610836N 0641451E, then clockwise by arc of a circle radius of 40 km centred at 611928N 0633616E to 610047N 0635827E, 610528N 0635257E, then anticlockwise by arc of a circle radius of 30 km centred at 611928N 0633616E to 611924N 0640952E.
SMAA 11	450	611928N 0633616E, 612729N 0640530E, then anticlockwise by arc of a circle radius of 30 km centred at 611928N 0633616E to 613326N 0635312E, 613805N 0635854E, then clockwise by arc of a circle radius of 40 km centred at 611928N 0633616E to 613009N 0641518E, 613247N 0642507E, then clockwise by arc of a circle radius of 50 km centred at 611928N 0633616E to 611916N 0643216E, 611924N 0640952E, then clockwise by arc of a circle radius of 30 km centred at 611928N 0633616E to 610528N 0635257E, 610047N 0635827E, then anticlockwise by arc of a circle radius of 40 km centred at 611928N 0633616E to 610836N 0641451E, 610552N 0642424E, then clockwise by arc of a circle radius of 50 km centred at 611928N 0633616E to 610552N 0624806E, 610836N 0625740E, then clockwise by arc of a circle radius of 40 km centred at 611928N 0633616E to 611921N 0625127E, 611916N 0624015E, then clockwise by arc of a circle radius of 50 km centred at 611928N 0633616E to 613247N 0624725E, 612450N 0631648E, then anticlockwise by arc of a circle radius of 20 km centred at 611928N 0633616E, 611404N 0631655E, 611646N 0632634E, then clockwise by arc of a circle radius of 10 km centred at 611928N 0633616E to 612209N 0632633E, 611928N 0633616E.