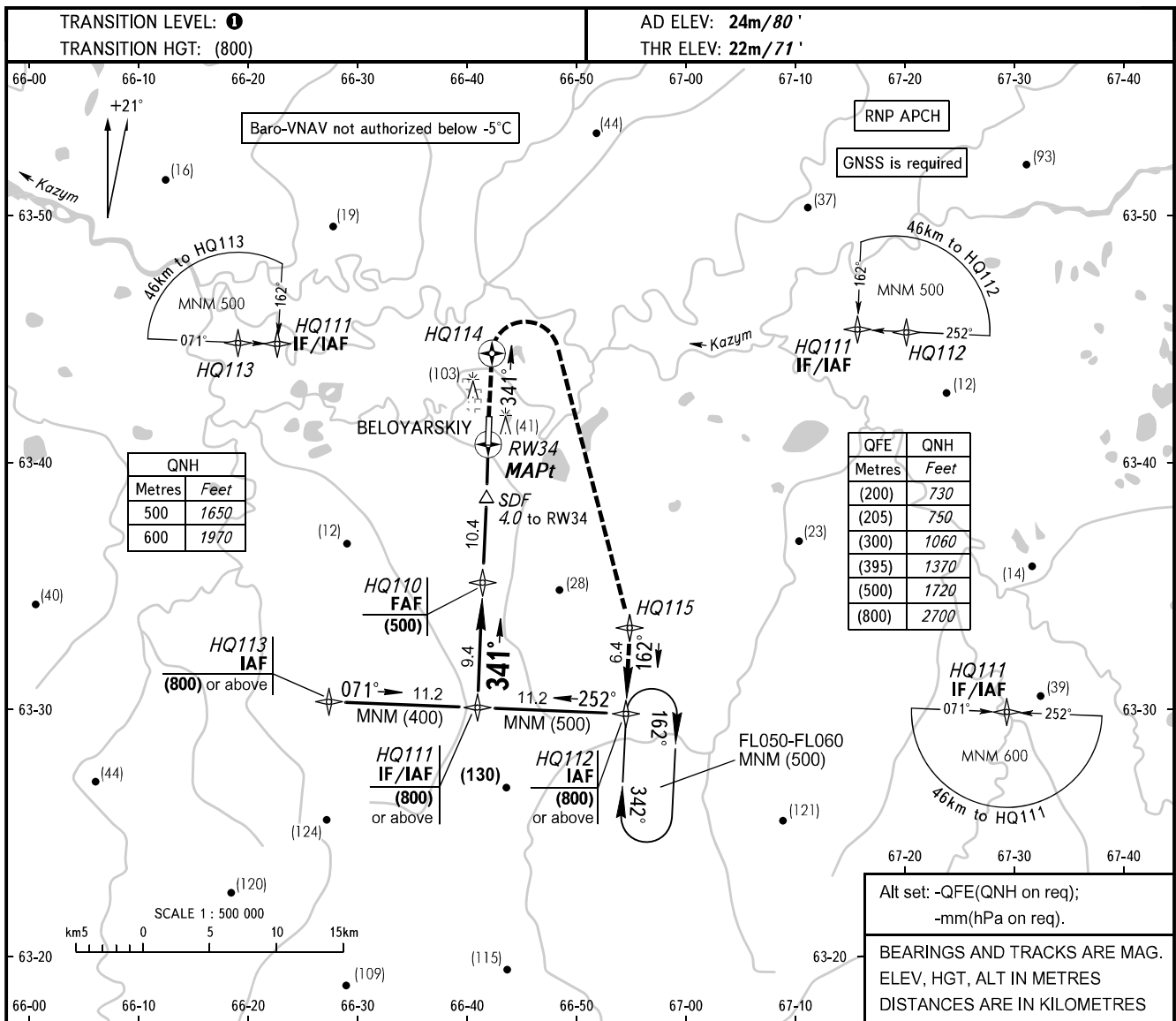


**INSTRUMENT  
APPROACH  
CHART - ICAO**

**BELOYARSKIY, RUSSIA  
BELOYARSKIY  
RNP RWY 34**

RADAR	120.900
START	118.100



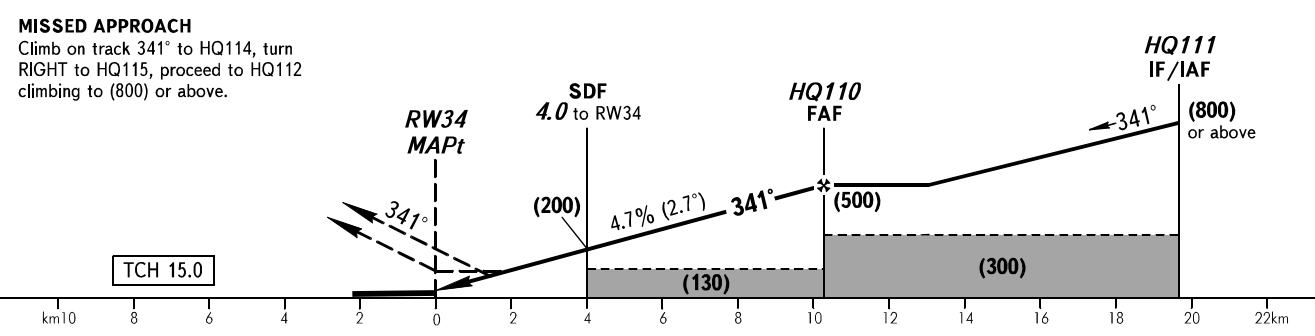
QNH	
Metres	Feet
500	1650
600	1970

QFE	QNH
Metres	Feet
(200)	730
(205)	750
(300)	1060
(395)	1370
(500)	1720
(800)	2700

Alt set: -QFE(QNH on req);  
-mm(hPa on req).

BEARINGS AND TRACKS ARE MAG.  
ELEV, HGT, ALT IN METRES  
DISTANCES ARE IN KILOMETRES

DIST to RW34	4.0	6.0	8.0	10.4
HEIGHT	(205)	(300)	(395)	(500)



OCA(H)		A	B	C	D
Straight-in Approach	LNAV	130(105)	130(105)	130(105)	130(105)
	LNAV/VNAV	95(75)	100(80)	105(80)	105(85)
Circling		215(195)	215(195)	245(225)	245(225)

**TRANSITION LEVEL:**  
- FLO40 when QFE is 750mm mercury column or above;  
- FLO50 when QFE is 723mm mercury column or above, but less than 750mm mercury column;  
- FLO60 when QFE is less than 723mm mercury column.  
**WARNING**  
MAPt at RW34. Timing not authorized for defining MAPt.

GROUND SPEED	km/h	150	180	210	240	270	300	330	360	390
RATE OF DESCENT	m/s	2.0	2.4	2.7	3.1	3.5	3.9	4.3	4.7	5.1