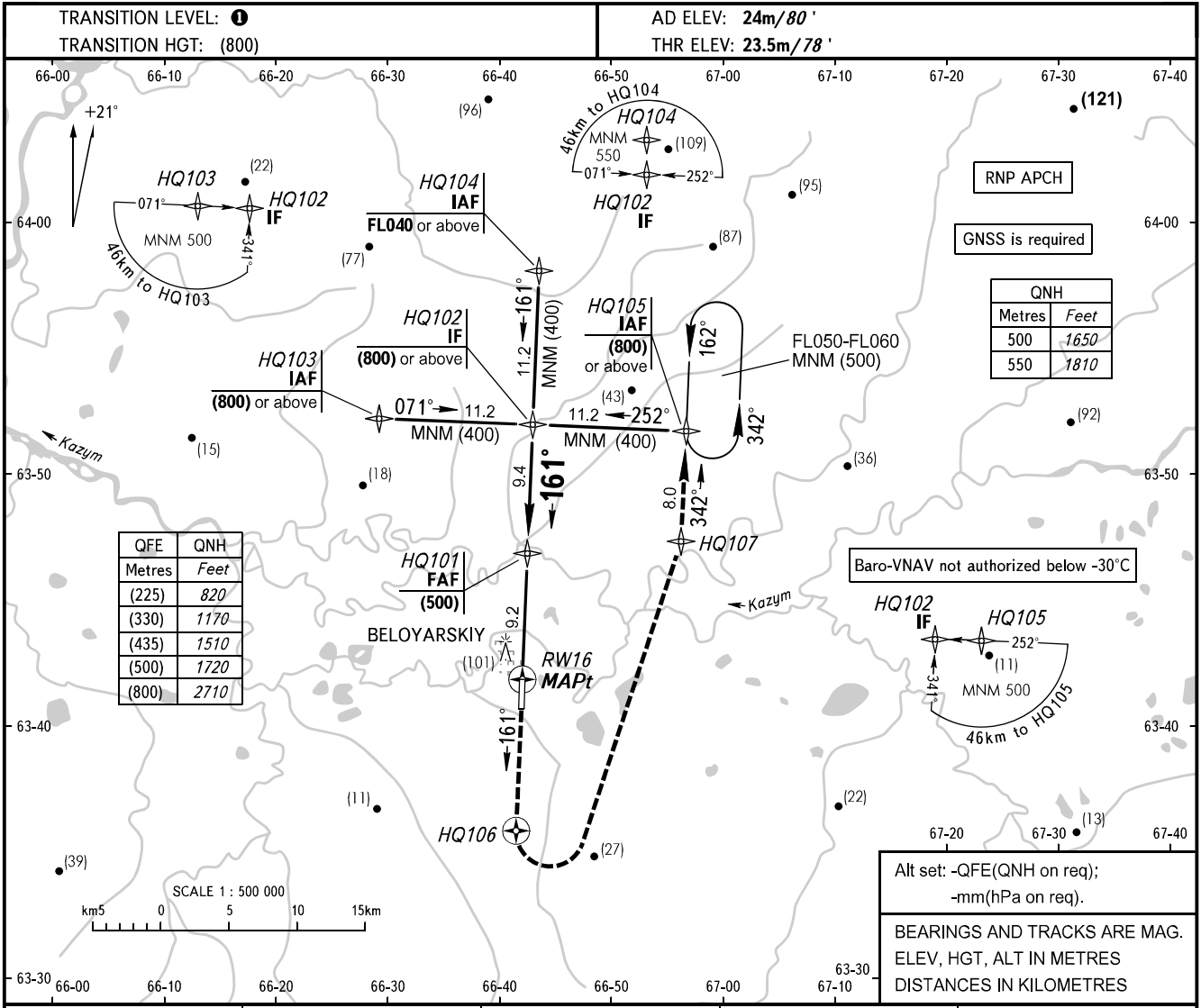


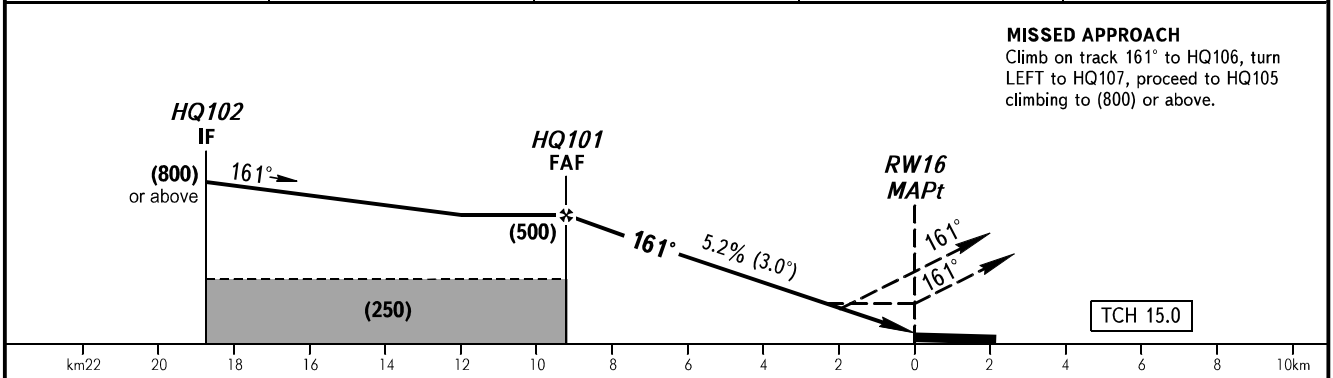
**INSTRUMENT  
APPROACH  
CHART - ICAO**

RADAR 120.900  
START 118.100

**BELOYARSKIY, RUSSIA**  
BELOYARSKIY  
RNP RWY 16



|              |       |       |       |       |
|--------------|-------|-------|-------|-------|
| DIST TO RW16 | 9.2   | 8.0   | 6.0   | 4.0   |
| HEIGHT       | (500) | (435) | (330) | (225) |



| OCA(H)               |           | A        | B        | C        | D        | 1 TRANSITION LEVEL:  |     |     |     |     |     |     |
|----------------------|-----------|----------|----------|----------|----------|--|-----|-----|-----|-----|-----|-----|
| Straight-in Approach | LNAV      | 170(145) | 170(145) | 170(145) | 170(145) | - FL040 when QFE is 750mm mercury column or above;                                     |     |     |     |     |     |     |
|                      | LNAV/VNAV | 150(125) | 150(125) | 155(130) | 155(130) | - FL050 when QFE is 723mm mercury column or above, but less than 750mm mercury column; |     |     |     |     |     |     |
| Circling             |           | 215(195) | 215(195) | 245(225) | 245(225) | - FL060 when QFE is less than 723mm mercury column.                                    |     |     |     |     |     |     |
| GROUND SPEED         |           | km/h     |          | 150      | 180      | 210  | 240 | 270 | 300 | 330 | 360 | 390 |
| RATE OF DESCENT      |           | m/s      |          | 2.2      | 2.6      | 3.0  | 3.5 | 3.9 | 4.3 | 4.8 | 5.2 | 5.6 |

**WARNING**  
MAPt at RW16. Timing not authorized for defining MAPt.

CHANGE: New chart