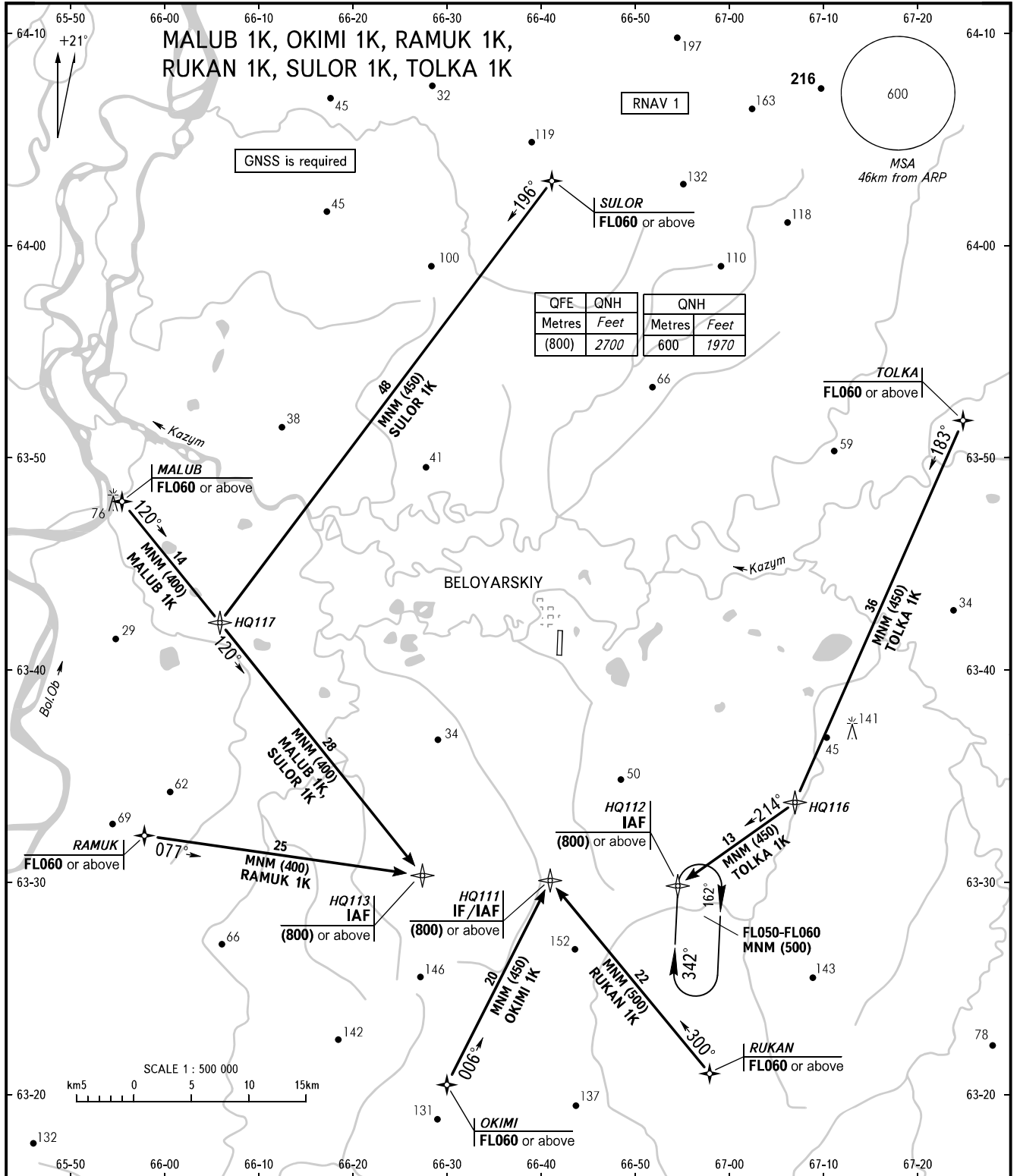


STANDARD ARRIVAL CHART
INSTRUMENT (STAR) - ICAO

BELOYARSKIY, RUSSIA
BELOYARSKIY
RNAV RWY 34

TRANSITION
LEVEL: ①



BERYOZOVO APPROACH 132.100
RADAR 120.900
START 118.100

① TRANSITION LEVEL:
- FL040 when QFE is 750mm mercury column or above;
- FL050 when QFE is 723mm mercury column or above, but less than 750mm mercury column;
- FL060 when QFE is less than 723mm mercury column.

BEARINGS AND TRACKS ARE MAGNETIC
ALTITUDES, HEIGHTS AND ELEVATIONS IN METRES
DISTANCES IN KILOMETRES

Alt set: -QFE(QNH on req);
-mm(hPa on req).