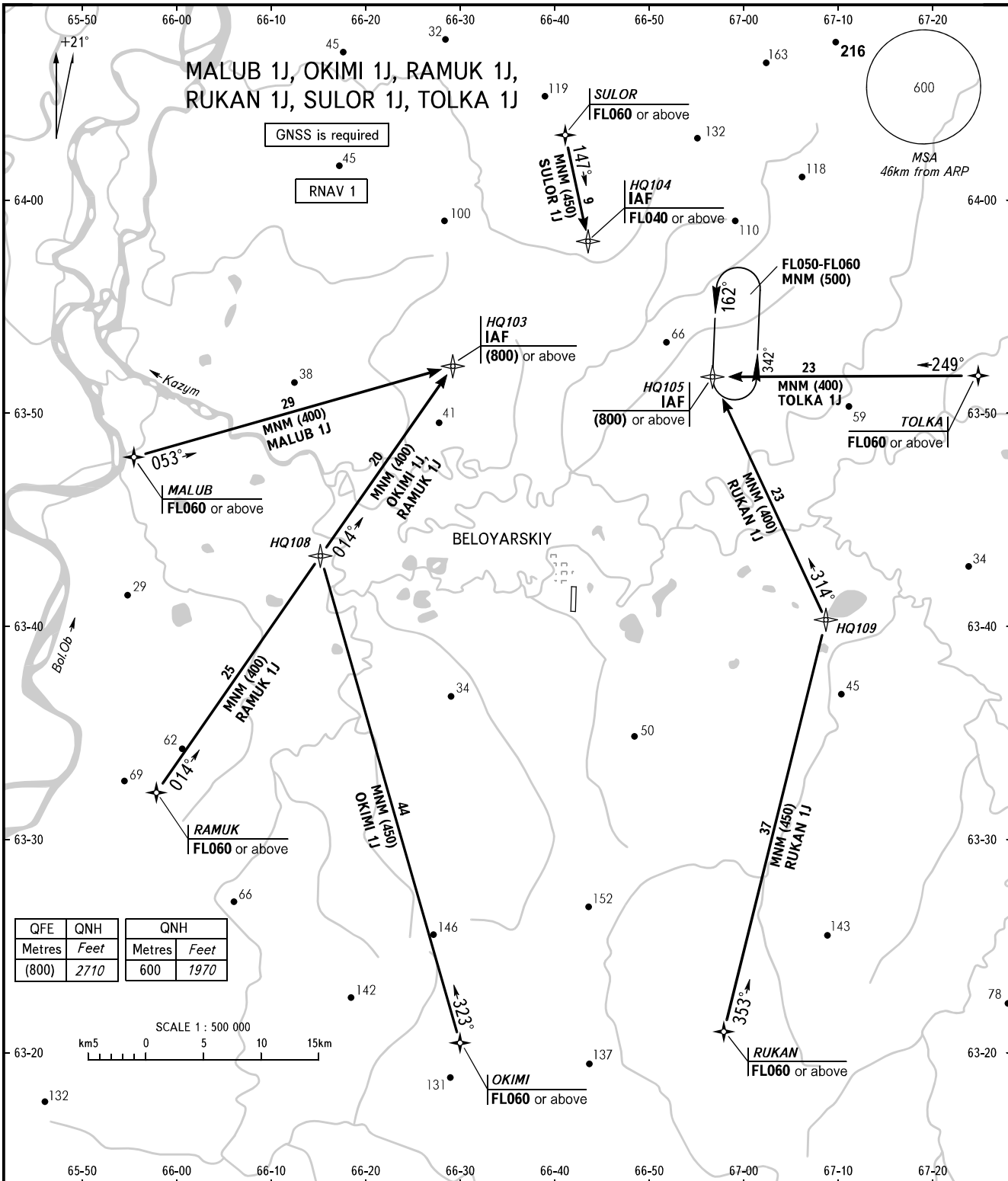


STANDARD ARRIVAL CHART
INSTRUMENT (STAR) - ICAO

BELOYARSKIY, RUSSIA
BELOYARSKIY
RNAV RWY 16



BERYOZOVO APPROACH **132.100**
RADAR **120.900**
START **118.100**

- ① TRANSITION LEVEL:**
- FL040 when QFE is 750mm mercury column or above;
 - FL050 when QFE is 723mm mercury column or above, but less than 750mm mercury column;
 - FL060 when QFE is less than 723mm mercury column.

BEARINGS AND TRACKS ARE MAGNETIC
ALTITUDES, HEIGHTS AND ELEVATIONS IN METRES
DISTANCES IN KILOMETRES

Alt set: -QFE(QNH on req);
-mm(hPa on req).

CHANGE: New chart