

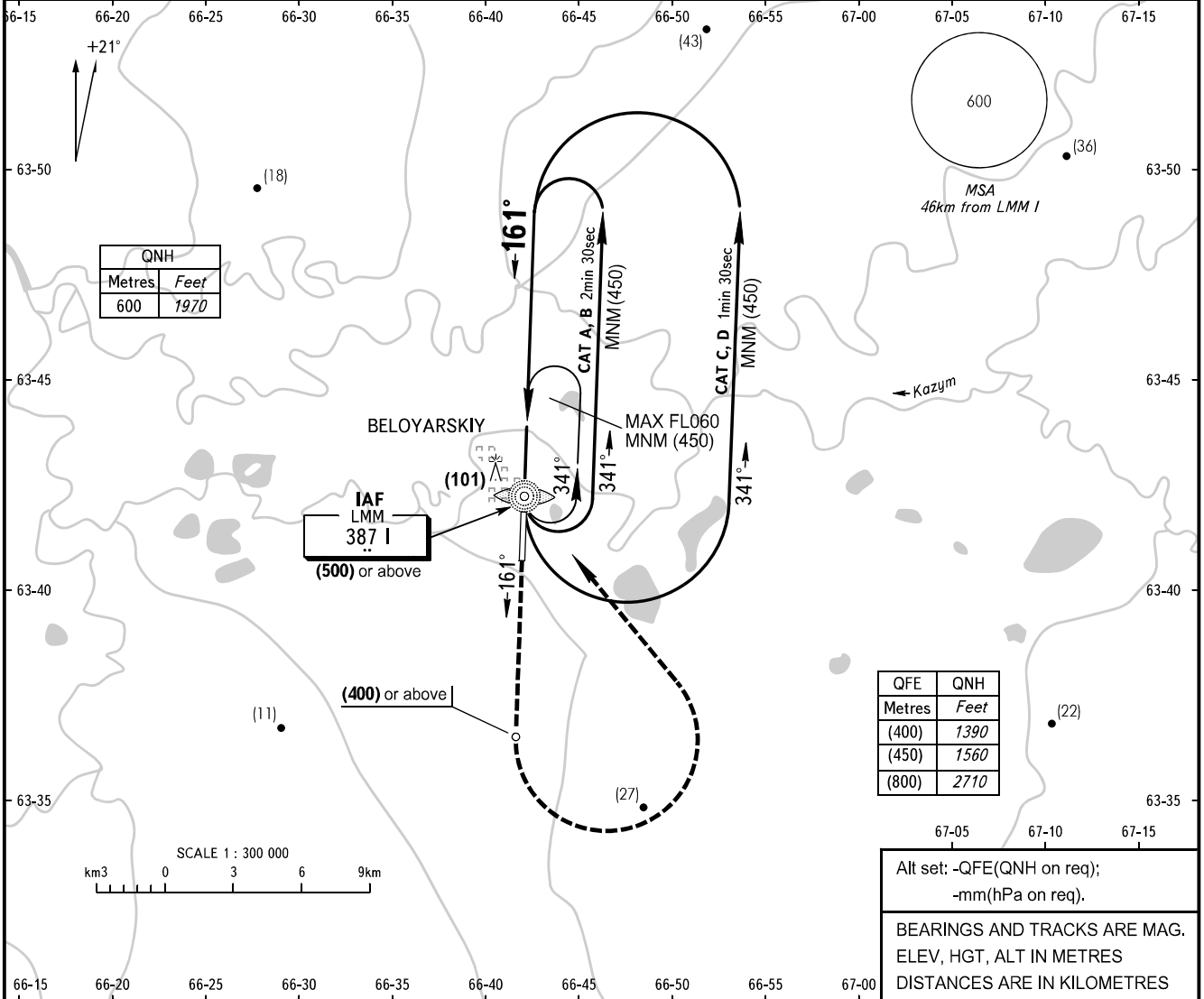
**INSTRUMENT  
APPROACH  
CHART - ICAO**

RADAR	120.900
START	118.100

**BELOYARSKIY, RUSSIA**  
BELOYARSKIY  
NDB X RWY 16

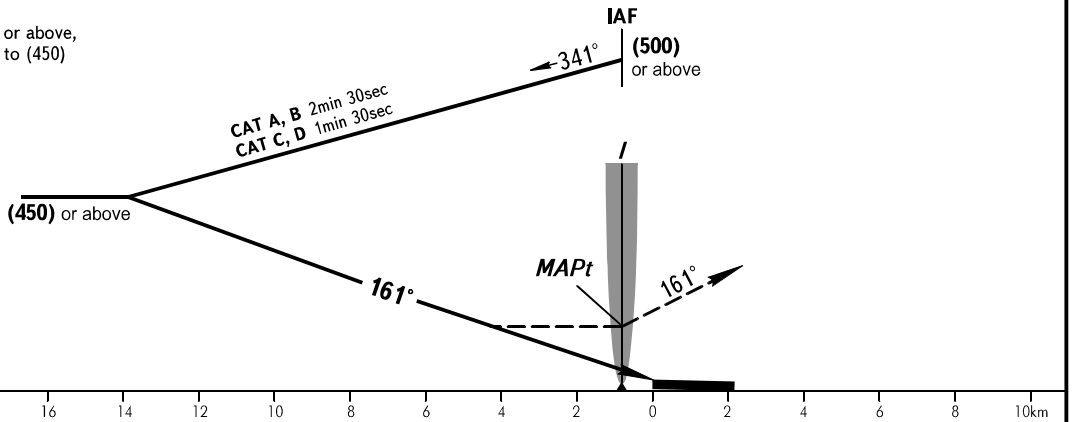
TRANSITION LEVEL: **1**  
TRANSITION HEIGHT: (800)

AD ELEV: 24m/80'  
THR ELEV: 23.5m/78'



**MISSED APPROACH**

Climb on track 161° to (400) or above,  
turn LEFT to LMM I climbing to (450)  
or above.



OCA(H)		A	B	C	D
Straight-in Approach		215(190)	215(190)	215(190)	215(190)
Circling		215(195)	215(195)	245(225)	245(225)

**1** TRANSITION LEVEL:  
- FL040 when QFE is 750mm mercury column or above;  
- FL050 when QFE is 723mm mercury column,  
but less than 750mm mercury column;  
- FL060 when QFE is less than 723mm mercury column.

**WARNING:**  
1. MAPt at LMM I. Timing not authorized for defining MAPt.  
2. Turn before MAPt is PROHIBITED.

CHANGE: New chart