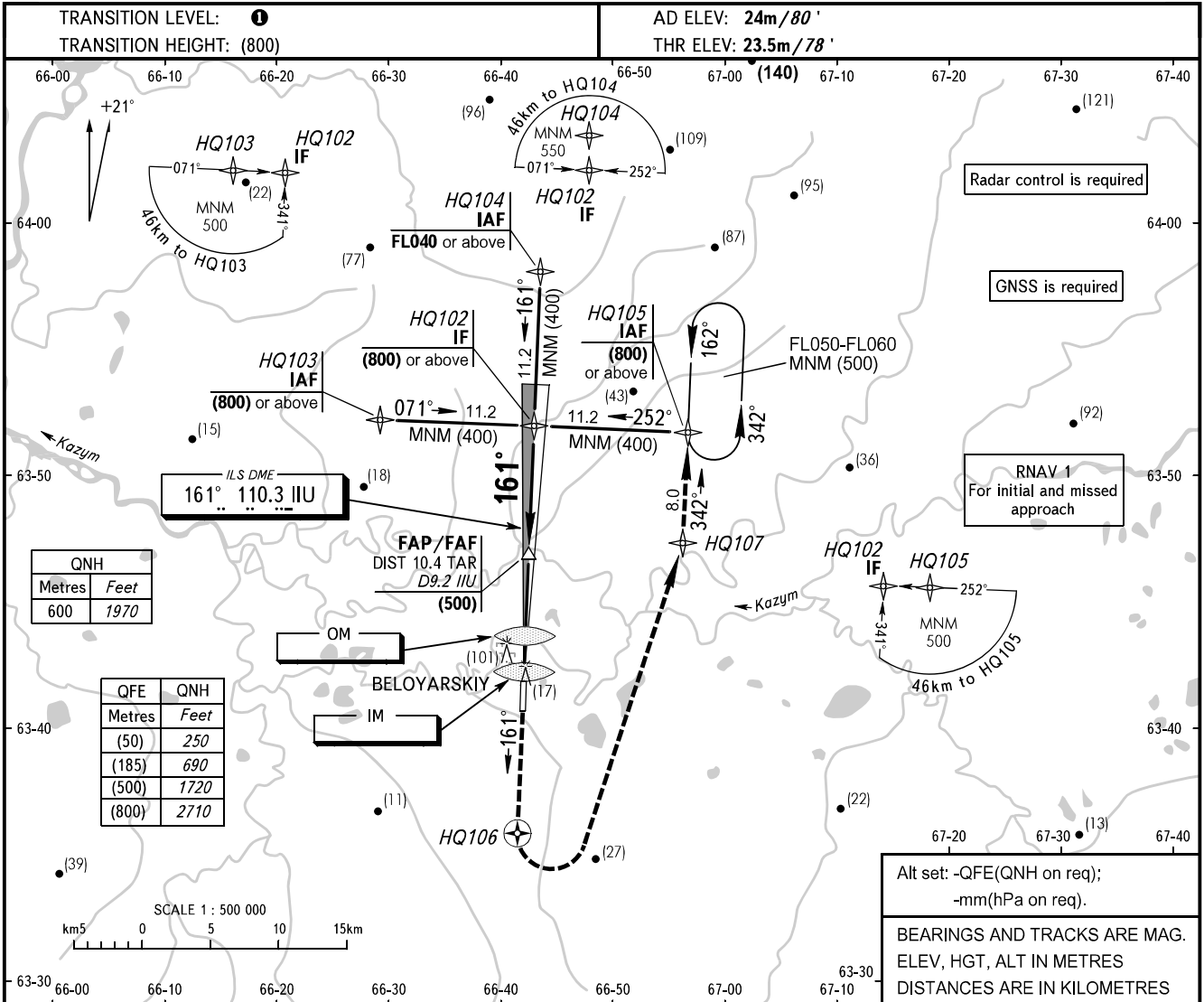


**INSTRUMENT
APPROACH
CHART - ICAO**

**BELOYARSKIY, RUSSIA
BELOYARSKIY
ILS Z, LOC Z RWY 16**

RADAR 120.900
START 118.100



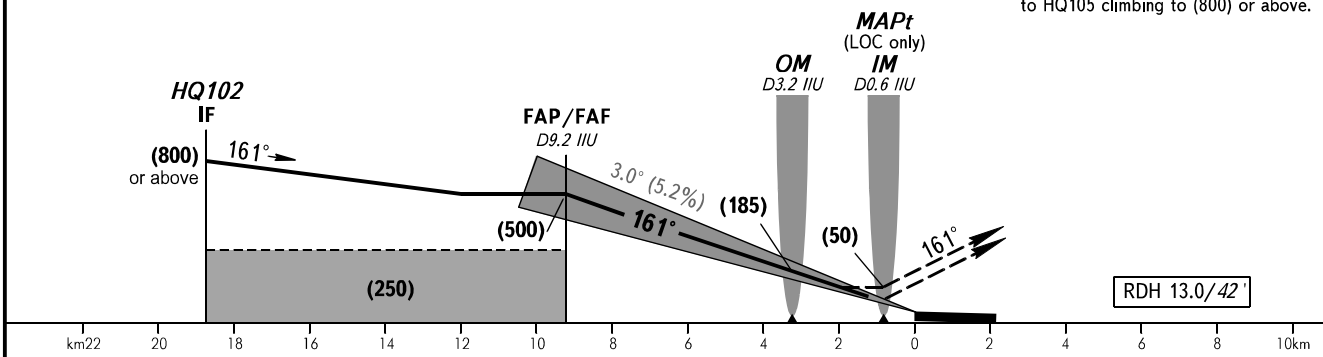
QNH	
Metres	Feet
600	1970

QFE	QNH
Metres	Feet
(50)	250
(185)	690
(500)	1720
(800)	2710

Alt set: -QFE(QNH on req);
-mm(hPa on req).
BEARINGS AND TRACKS ARE MAG.
ELEV, HGT, ALT IN METRES
DISTANCES ARE IN KILOMETRES

FAF fixed by TAR (DIST 10.4)

MISSED APPROACH
Climb on track 161° to HQ106,
turn LEFT to HQ107, proceed
to HQ105 climbing to (800) or above.



OCA(H)		A	B	C	D
Straight-in Approach	CAT I	67(43)	69(45)	72(48)	76(52)
	LOC	140(115)	140(115)	140(115)	140(115)
Circling		215(195)	215(195)	245(225)	245(225)

1 TRANSITION LEVEL:
- FL040 when QFE is 750mm mercury column or above;
- FL050 when QFE is 723mm mercury column or above,
but less than 750mm mercury column;
- FL060 when QFE is less than 723mm mercury column.
WARNING:
1. Zero range of DME IIU is indicated at RWY 16 THR.
2. MAPt (LOC) at IM. Timing not authorized for defining MAPt.
3. Turn before MAPt (LOC) is PROHIBITED.

GROUND SPEED	km/h	150	180	210	240	270	300	330	360	390
RATE OF DESCENT	m/s	2.2	2.6	3.0	3.5	3.9	4.3	4.8	5.2	5.6

CHANGE: New chart