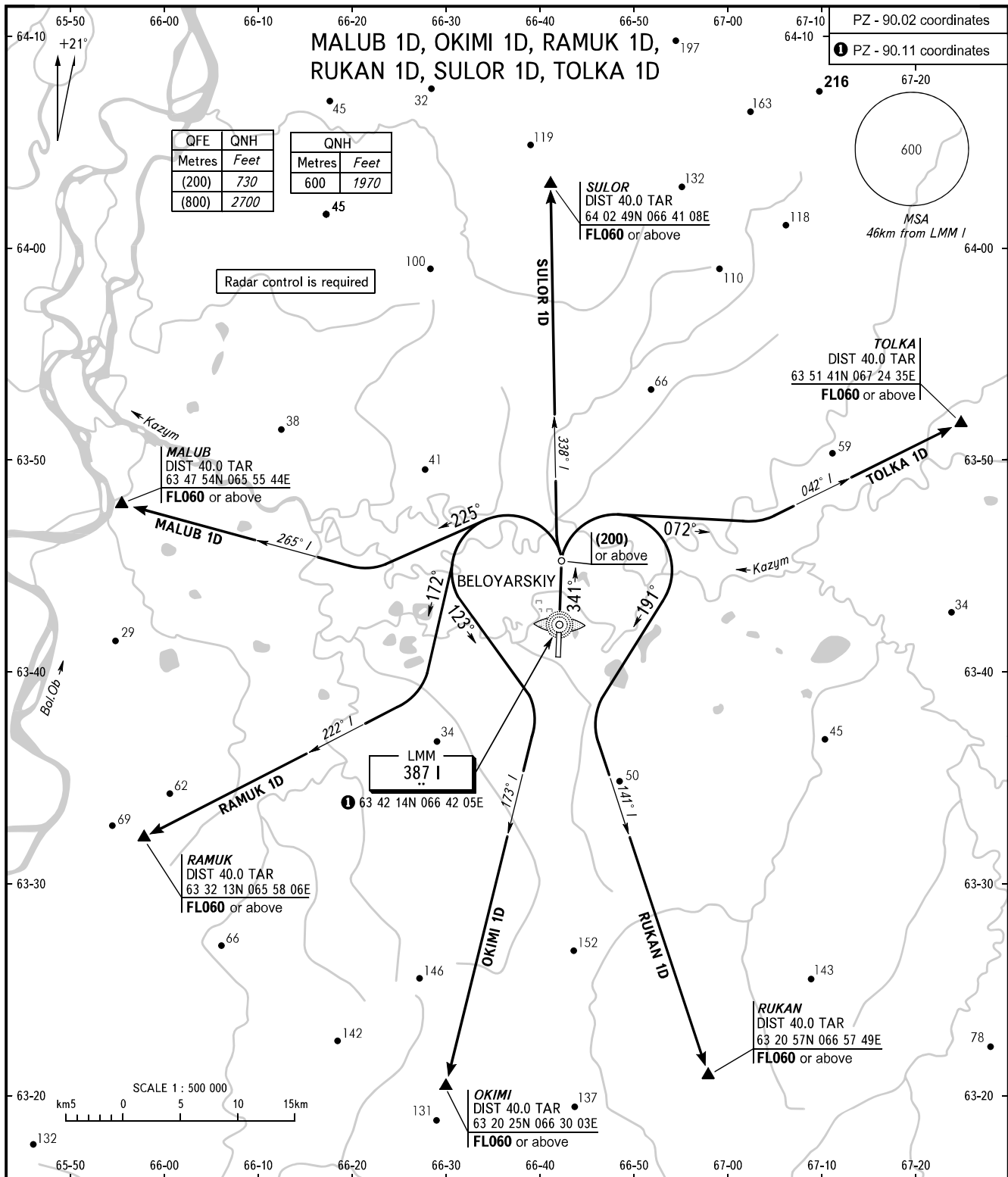


STANDARD DEPARTURE CHART  
INSTRUMENT (SID) - ICAO

TRANSITION  
HEIGHT: (800)

BELOYARSKIY, RUSSIA  
BELOYARSKIY  
RWY 34



START 118.100  
RADAR 120.900  
BERYOZOVO APPROACH 132.100

- WARNING:**
- The minimum climb gradients required due to the airspace structure:
    - 4.7% up to FL060 for SID SULOR 1D;
    - 4.3% up to FL060 for SID TOLKA 1D;
    - 4.1% up to FL060 for SID MALUB 1D.
  - Turn before LMM I is PROHIBITED.
  - Close-in OBST AVBL.

BEARINGS AND TRACKS ARE MAGNETIC  
ALTITUDES, HEIGHTS AND ELEVATIONS IN METRES  
DISTANCES IN KILOMETRES

Alt set: -QFE(QNH on req);  
-mm(hPa on req).