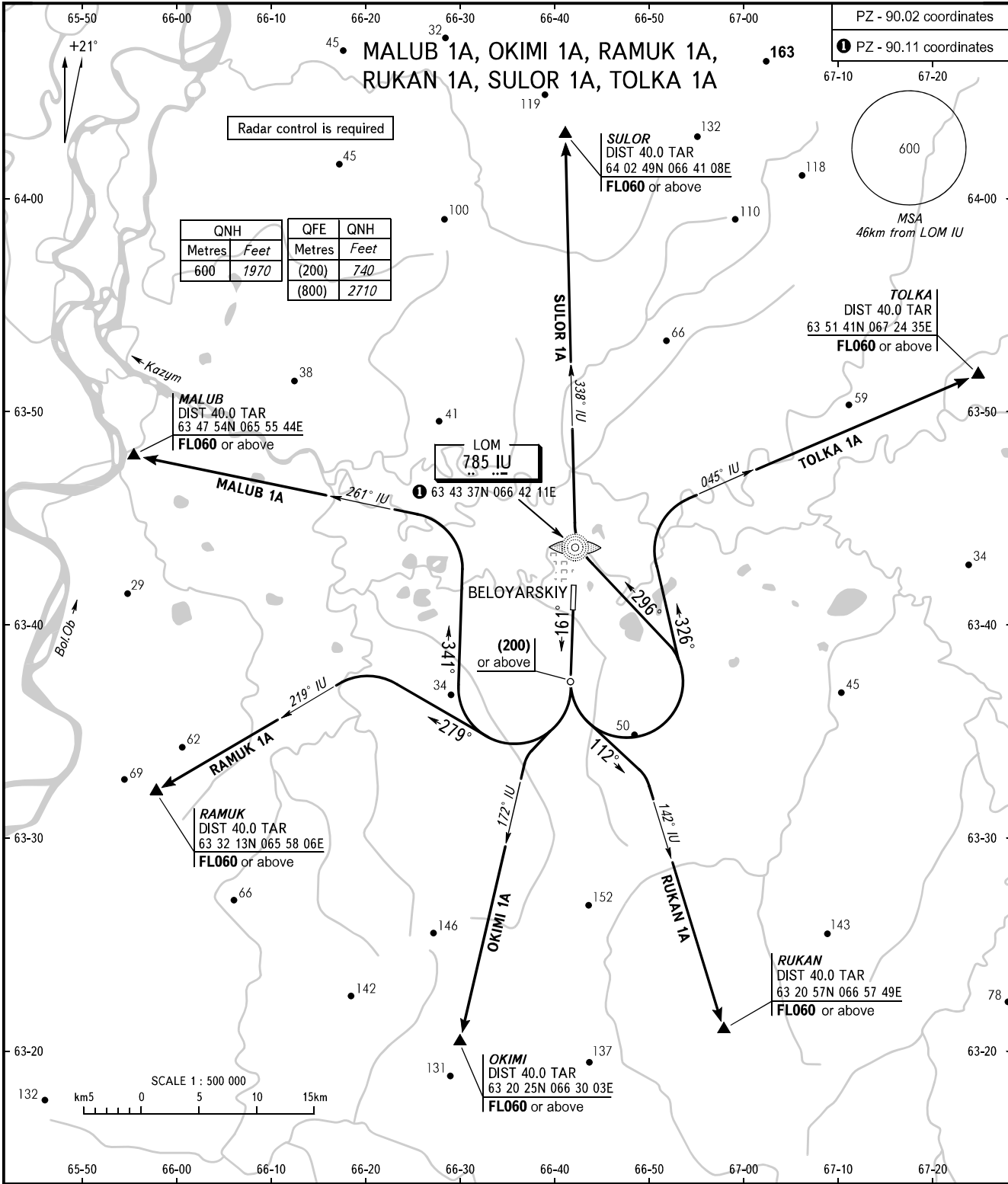


STANDARD DEPARTURE CHART
INSTRUMENT (SID) - ICAO

TRANSITION
HEIGHT: (800)

BELOYARSKIY, RUSSIA
BELOYARSKIY
RWY 16



START 118.100
RADAR 120.900
BERYOZOVO APPROACH 132.100

WARNING
The minimum climb gradients required due to the airspace structure:
- 4.6% up to FL060 for SID OKIMI 1A;
- 4.0% up to FL060 for SID RAMUK 1A;
- 4.6% up to FL060 for SID RUKAN 1A.

BEARINGS AND TRACKS ARE MAGNETIC
ALTITUDES, HEIGHTS AND ELEVATIONS IN METRES
DISTANCES IN KILOMETRES

Alt set: -QFE(QNH on req);
-mm(hPa on req).