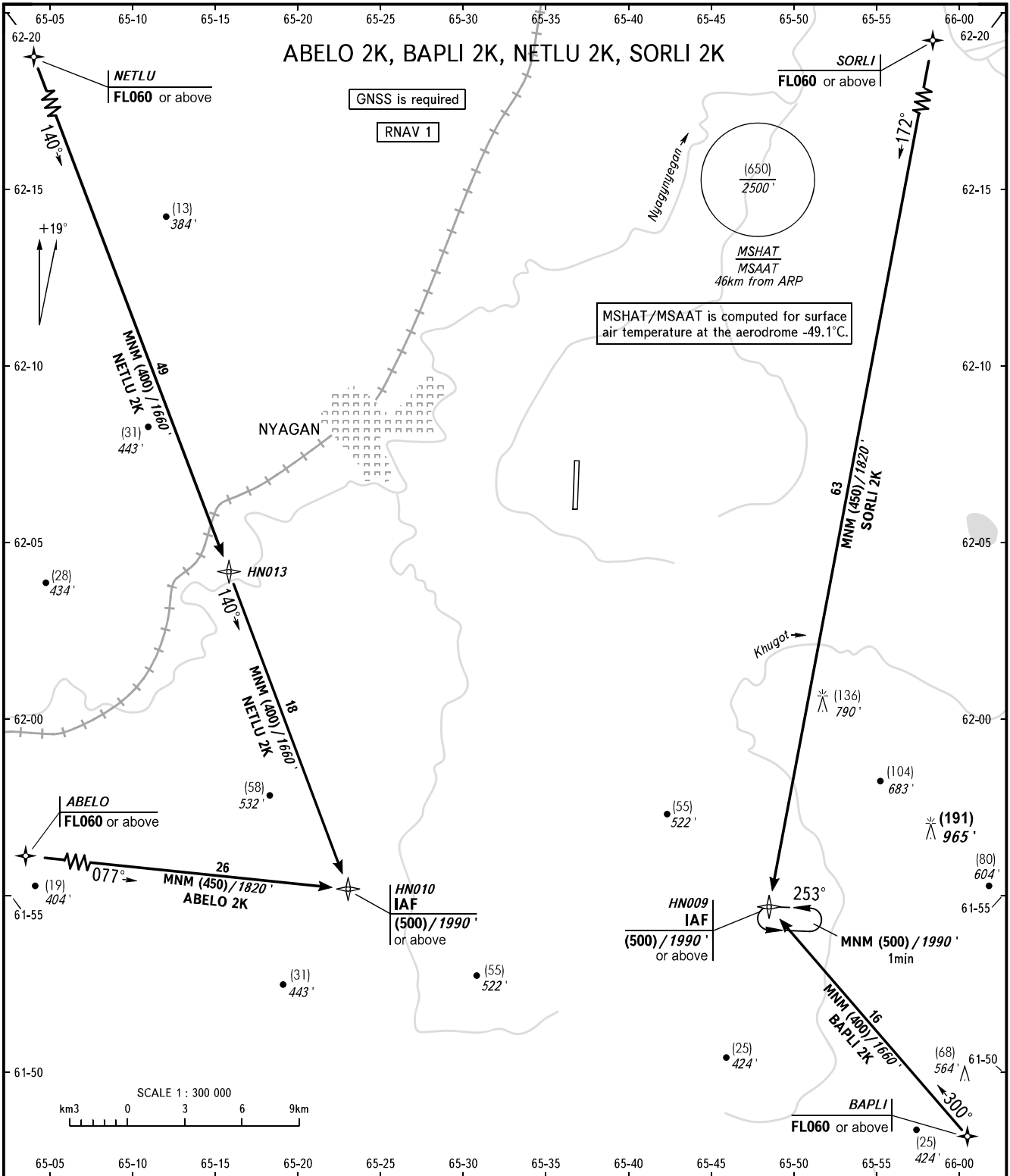


STANDARD ARRIVAL CHART
INSTRUMENT (STAR) - ICAO

NYAGAN, RUSSIA
NYAGAN
RNAV RWY 34

TRANSITION LEVEL:
①



TOWER 122.300

① TRANSITION LEVEL:

- FL050 when QFE is 760mm mercury column (1013 hPa) or above;
- FL060 when QFE is less than 760mm mercury column (1013 hPa), but 733mm mercury column (977 hPa) or above;
- FL070 when QFE is less than 733mm mercury column (977 hPa).

WARNING

Change of heights/flight levels at waypoints is AVBL by arrangement with ATS unit, but not below the safe heights on route segments.

BEARINGS AND TRACKS ARE MAGNETIC
HEIGHTS IN METRES
ALTITUDES IN FEET
ELEVATIONS IN METRES AND FEET
DISTANCES IN KILOMETRES

Alt set: - QFE (QNH on req);
- mm (hPa on req).

CHANGE: New chart