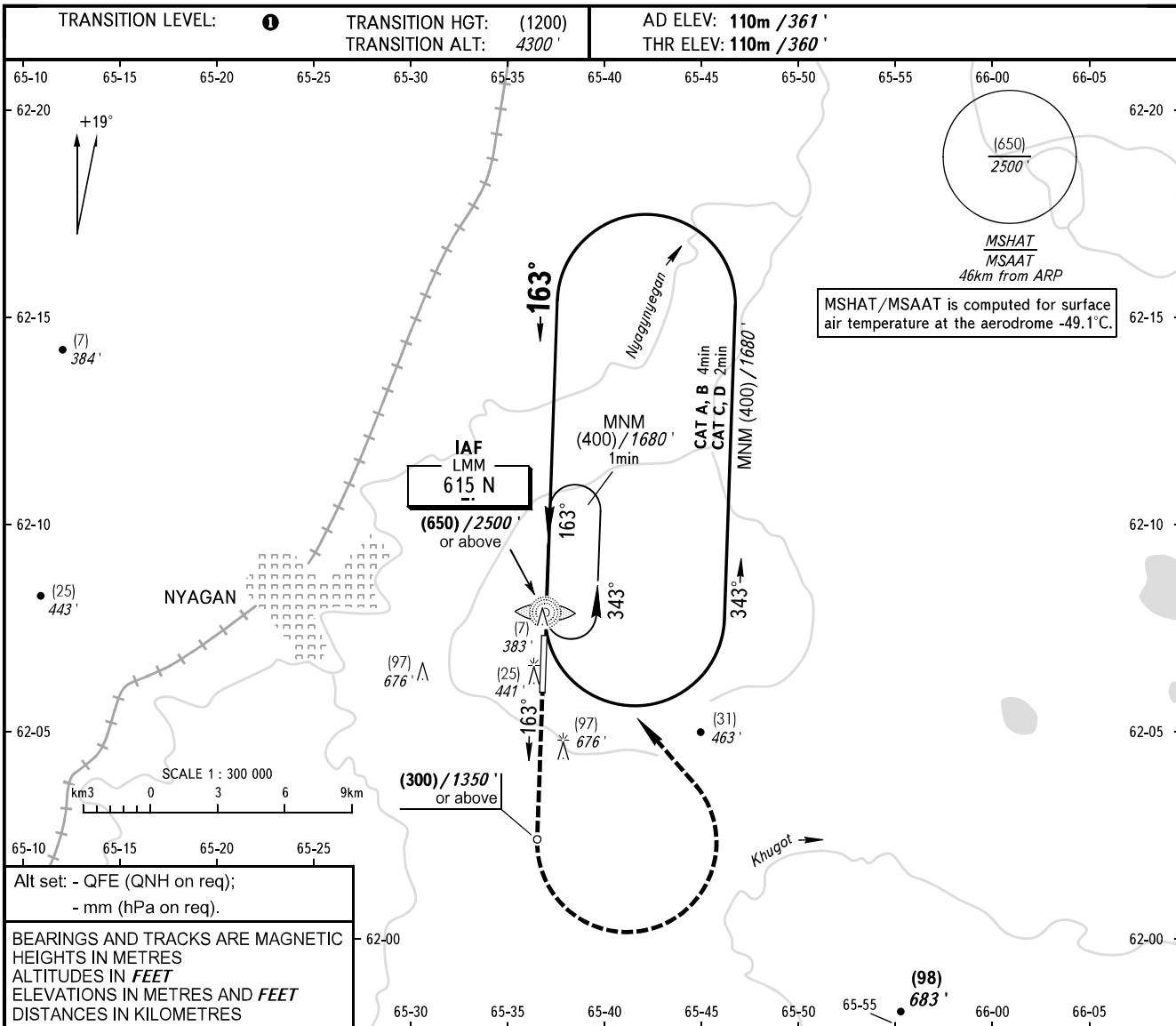


**INSTRUMENT
APPROACH
CHART - ICAO**

TOWER	122.300
-------	----------------

NYAGAN, RUSSIA
NYAGAN
NDB X RWY 16

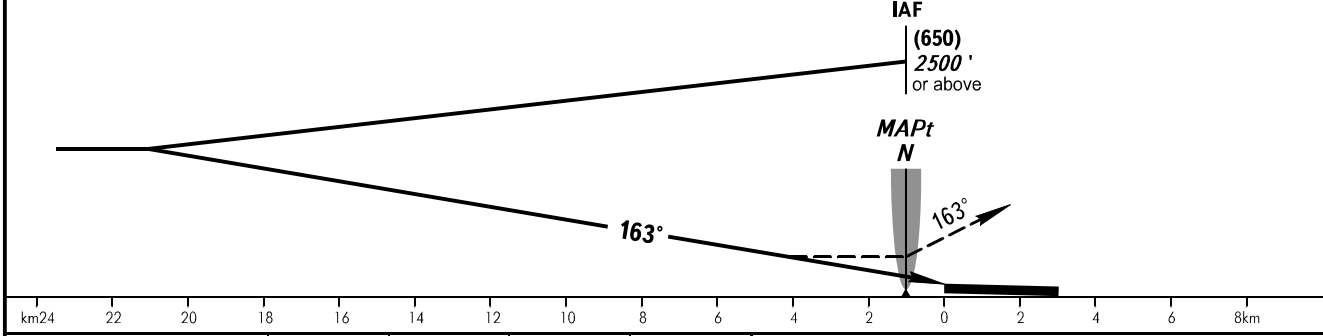


Alt set: - QFE (QNH on req);
- mm (hPa on req).

BEARINGS AND TRACKS ARE MAGNETIC
HEIGHTS IN METRES
ALTITUDES IN *FEET*
ELEVATIONS IN METRES AND *FEET*
DISTANCES IN KILOMETRES

MSHAT/MSAAT is computed for surface air temperature at the aerodrome -49.1°C.

MISSED APPROACH
Climb on track 163° to (300)/1350' or above, then turn LEFT to LMM N, climbing to (400)/1680' or above.



OCA(H)		A	B	C	D
Straight-in		210 (100) 690'	210 (100) 690'	210 (100) 690'	210 (100) 690'
	Approach				
Circling		235 (125) 770'	300 (190) 990'	330 (220) 1090'	330 (220) 1090'

TRANSITION LEVEL:

- FL050 when QFE is 760mm mercury column (1013 hPa) or above;
- FL060 when QFE is less than 760mm mercury column (1013 hPa), but 733mm mercury column (977 hPa) or above;
- FL070 when QFE is less than 733mm mercury column (977 hPa).

WARNING:

1. MAPt at LMM N. Timing not authorized for defining MAPt.
2. Turn before MAPt is PROHIBITED.

CHANGE: New chart