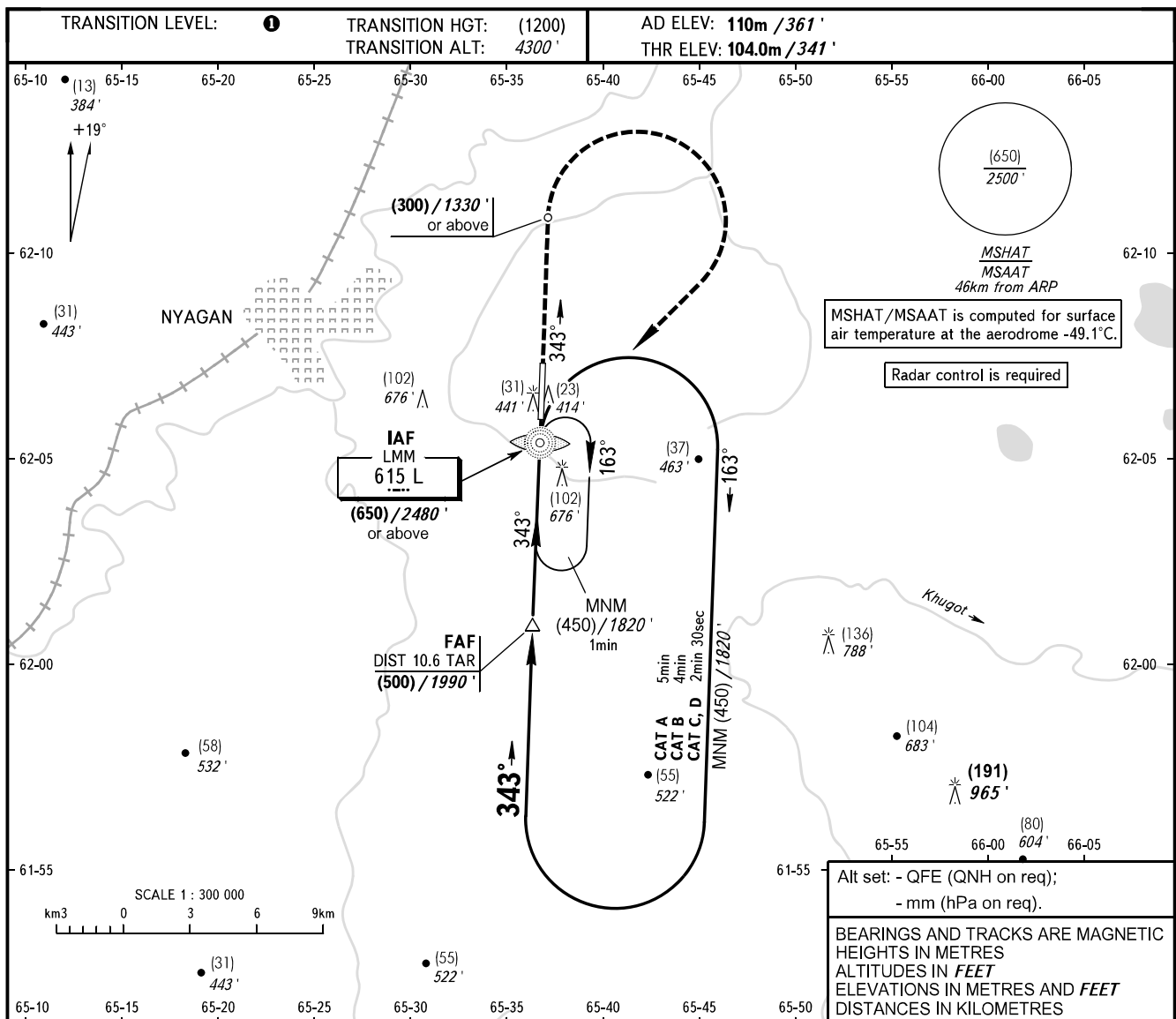


**INSTRUMENT  
APPROACH  
CHART - ICAO**

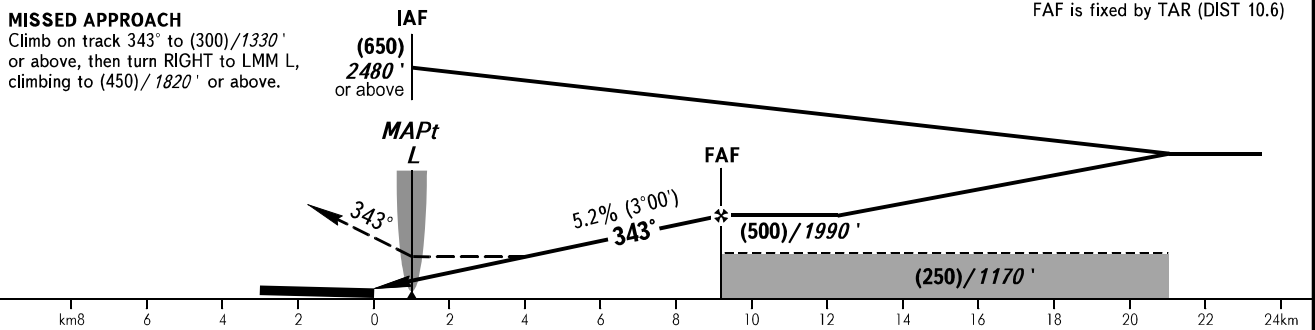
**NYAGAN, RUSSIA**  
NYAGAN  
NDB Z RWY 34

TOWER **122.300**



**MISSED APPROACH**

Climb on track 343° to (300)/1330' or above, then turn RIGHT to LMM L, climbing to (450)/1820' or above.



OCA(H)		A	B	C	D
Straight-in	Approach	285 (180) 940'	285 (180) 940'	285 (180) 940'	285 (180) 940'
	Circling	235 (125) 770'	300 (190) 990'	330 (220) 1090'	330 (220) 1090'

**① TRANSITION LEVEL:**  
 - FLO50 when QFE is 760mm mercury column (1013 hPa) or above;  
 - FLO60 when QFE is less than 760mm mercury column (1013 hPa), but 733mm mercury column (977 hPa) or above;  
 - FLO70 when QFE is less than 733mm mercury column (977 hPa).

**WARNING:**  
 1. MAPt at LMM L. Turn before MAPt is PROHIBITED.  
 2. TAR reads zero at ARP.

GROUND SPEED	km/h	150	180	210	240	270	300	330	360	390
FAF - MAPt 8.2 km	min:sec	3:18	2:45	2:21	2:04	1:50	1:39	1:30	1:22	1:16
RATE OF DESCEND	m/s	2.2	2.6	3.0	3.5	3.9	4.3	4.8	5.2	5.6