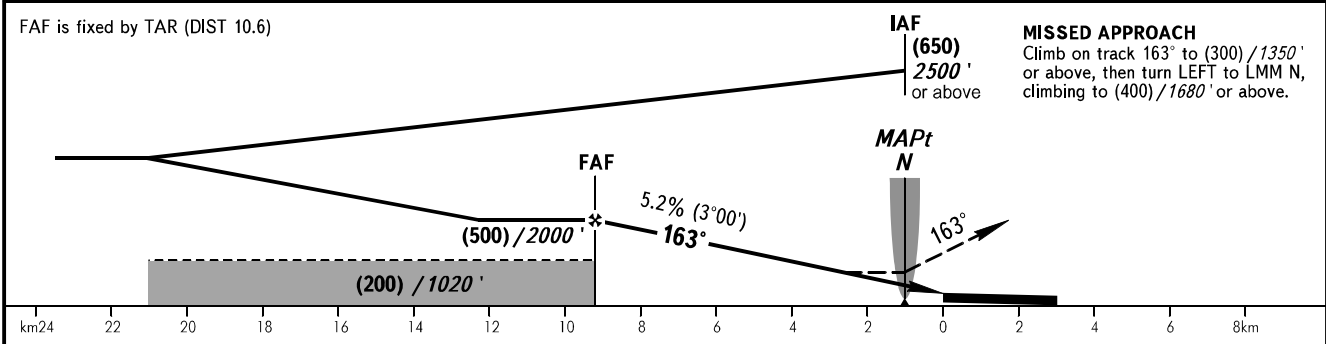
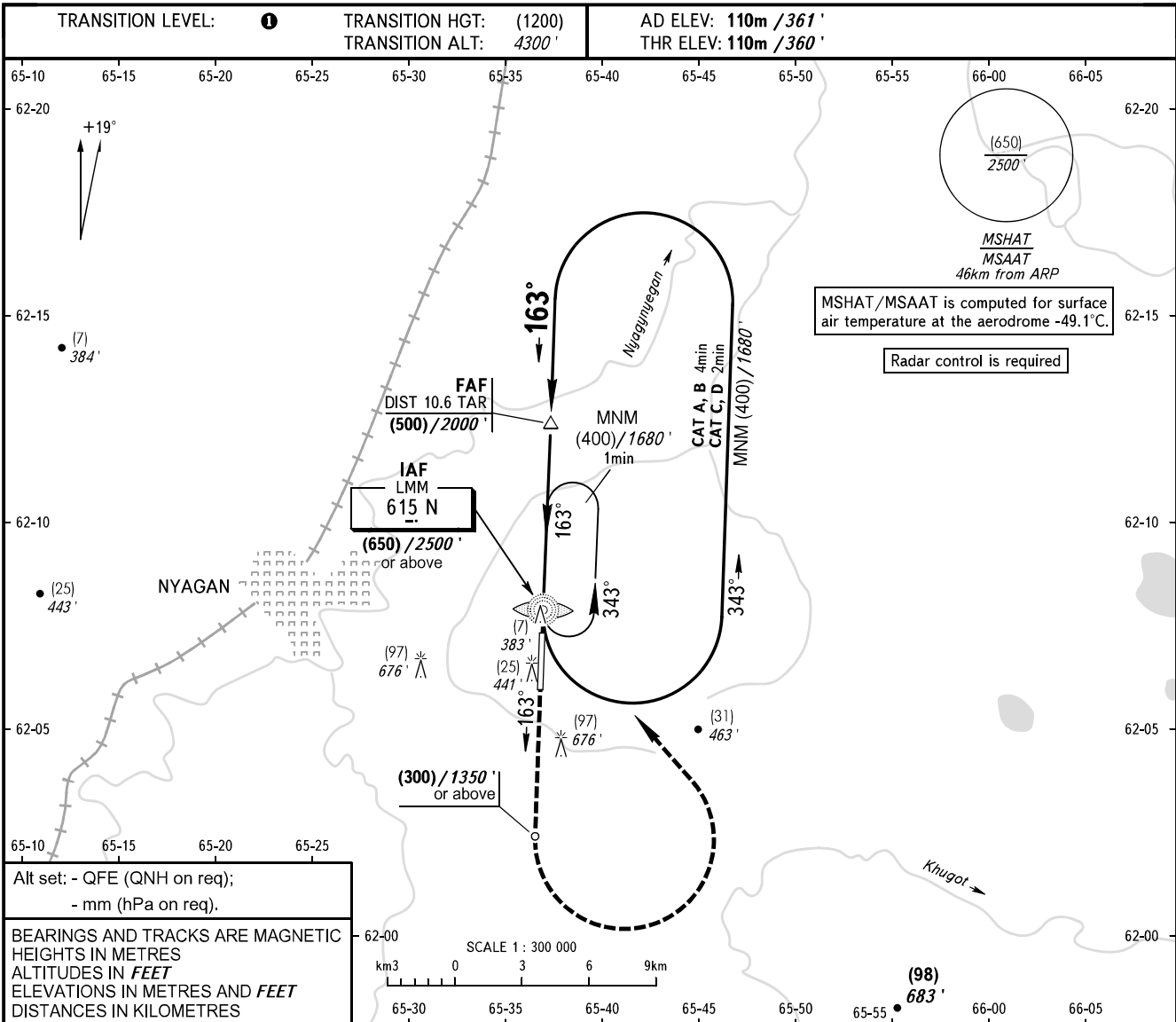


**INSTRUMENT
APPROACH
CHART - ICAO**

TOWER	122.300
-------	---------

NYAGAN, RUSSIA
NYAGAN
NDB Z RWY 16



OCA(H)		A	B	C	D	1 TRANSITION LEVEL: - FL050 when QFE is 760mm mercury column (1013 hPa) or above; - FL060 when QFE is less than 760mm mercury column (1013 hPa), but 733mm mercury column (977 hPa) or above; - FL070 when QFE is less than 733mm mercury column (977 hPa). WARNING: 1. MAPt at LMM N. 2. Turn before MAPt is PROHIBITED. 3. TAR reads zero at ARP.					
Straight-in	Approach	195 (85) 640'	195 (85) 640'	195 (85) 640'	195 (85) 640'						
	Circling	235 (125) 770'	300 (190) 990'	330 (220) 1090'	330 (220) 1090'						
GROUND SPEED		km/h	150	180	210	240	270	300	330	360	390
FAF - MAPt 8.2 km		min:sec	3:19	2:46	2:22	2:04	1:51	1:40	1:30	1:23	1:17
RATE OF DESCEND		m/s	2.2	2.6	3.0	3.5	3.9	4.3	4.8	5.2	5.6

CHANGE: New chart