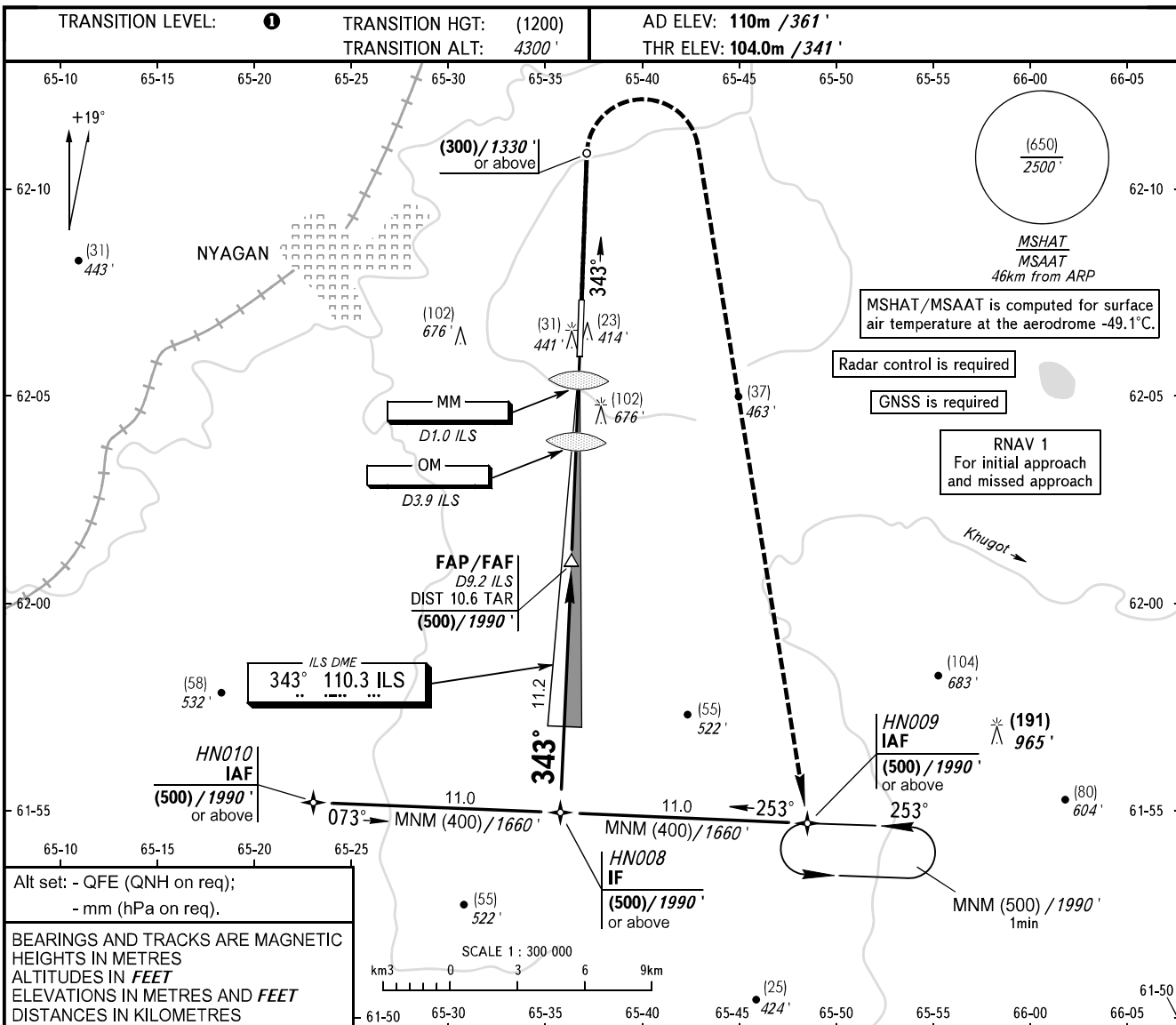


INSTRUMENT
APPROACH
CHART - ICAO

NYAGAN, RUSSIA
NYAGAN
ILS Z, LOC Z RWY 34

TOWER 122.300



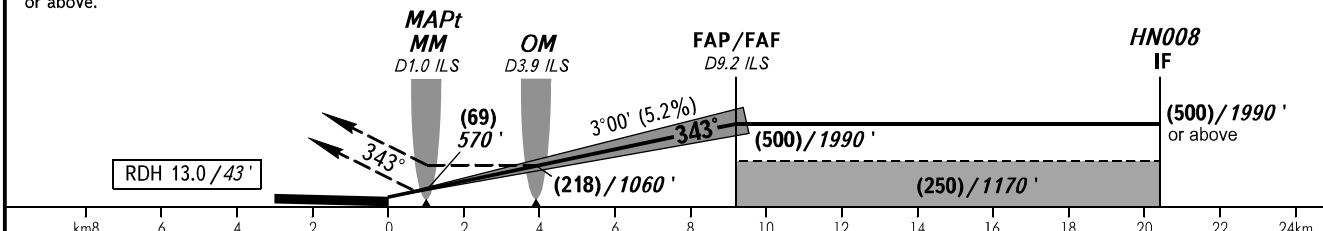
Alt set: - QFE (QNH on req);
- mm (hPa on req).

BEARINGS AND TRACKS ARE MAGNETIC
HEIGHTS IN METRES
ALTITUDES IN FEET
ELEVATIONS IN METRES AND FEET
DISTANCES IN KILOMETRES

MISSED APPROACH
Climb on track 343° to (300)/1330' or above, then turn RIGHT to HN009, climbing to (500)/1990' or above.

DME ILS	4.0	6.0	8.0	9.2
HEIGHT/ALTITUDE	(225)/1080'	(330)/1430'	(435)/1770'	(500)/1990'

FAF is fixed by TAR (DIST 10.6)



OCA(H)		A	B	C	D
Straight-in	ILS	166 (62) 545'	169 (65) 555'	172 (68) 565'	175 (71) 575'
	LOC	220 (120) 730'	220 (120) 730'	220 (120) 730'	220 (120) 730'
Circling		235 (125) 770'	300 (190) 990'	330 (220) 1090'	330 (220) 1090'

TRANSITION LEVEL:
- FL050 when QFE is 760mm mercury column (1013 hPa) or above;
- FL060 when QFE is less than 760mm mercury column (1013 hPa), but 733mm mercury column (977 hPa) or above;
- FL070 when QFE is less than 733mm mercury column (977 hPa).

WARNING:
1. MAPt at MM. Turn before MAPt is PROHIBITED.
2. TAR reads zero at ARP.
3. ILS DME ILS reads zero at RWY 34 THR.

GROUND SPEED	km/h	150	180	210	240	270	300	330	360	390
FAF - MAPt 8.2 km	min:sec	3:18	2:45	2:21	2:04	1:50	1:39	1:30	1:22	1:16
RATE OF DESCEND	m/s	2.2	2.6	3.0	3.5	3.9	4.3	4.8	5.2	5.6

CHANGE: New chart