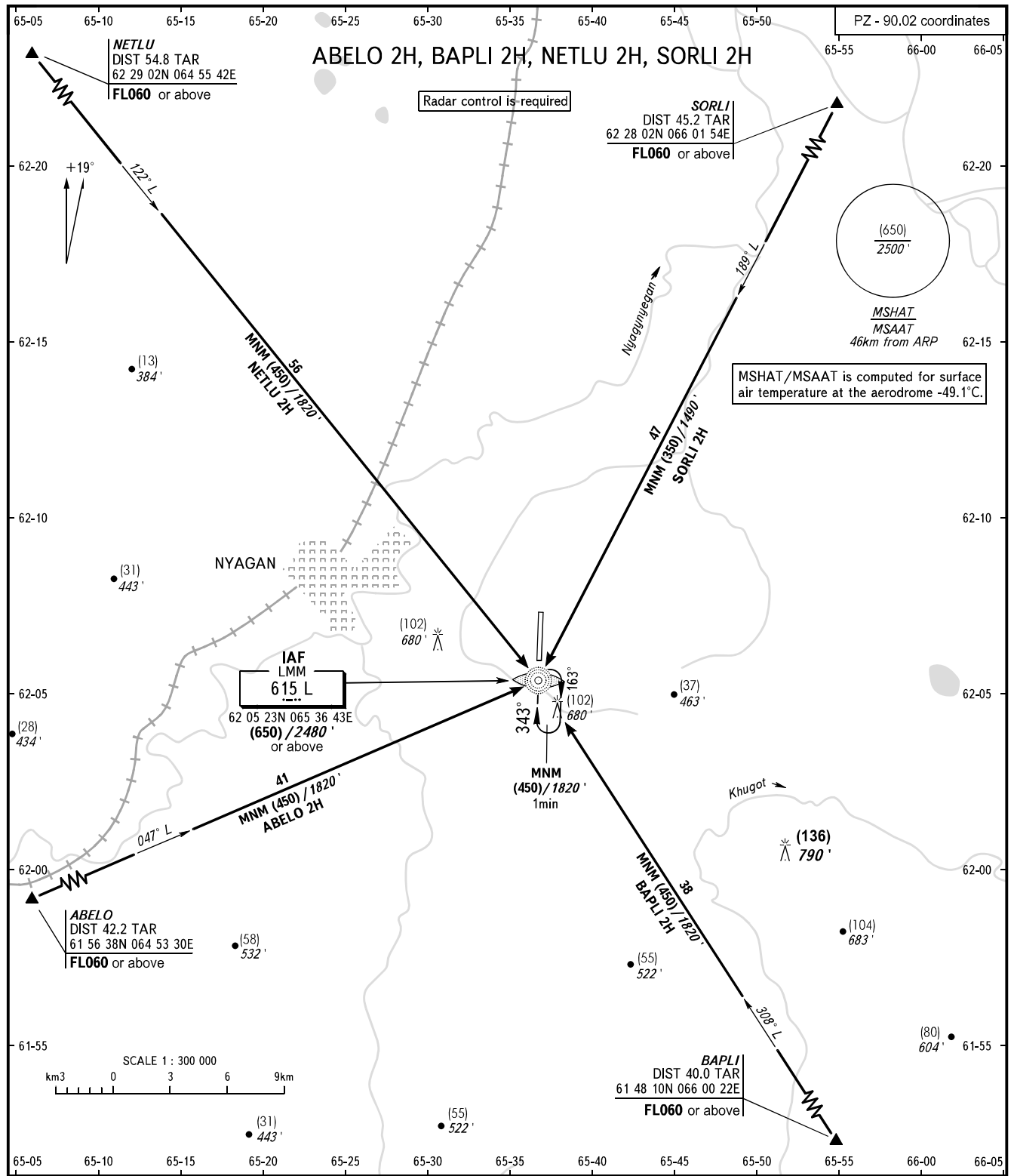


**NYAGAN, RUSSIA**  
NYAGAN  
RWY 34

**STANDARD ARRIVAL CHART**  
INSTRUMENT (STAR) - ICAO

TRANSITION LEVEL: **1**



<p><b>TOWER</b>                    <b>122.300</b></p>	<p><b>WARNING</b> TAR reads zero at ARP.</p>	<p><b>1</b> <b>TRANSITION LEVEL:</b></p> <ul style="list-style-type: none"> <li>- FL050 when QFE is 760mm mercury column (1013 hPa) or above;</li> <li>- FL060 when QFE is less than 760mm mercury column (1013 hPa), but 733mm mercury column (977 hPa) or above;</li> <li>- FL070 when QFE is less than 733mm mercury column (977 hPa).</li> </ul>
<p>BEARINGS AND TRACKS ARE MAGNETIC HEIGHTS IN METRES ALTITUDES IN <i>FEET</i> ELEVATIONS IN METRES AND <i>FEET</i> DISTANCES IN KILOMETRES</p>		<p>Alt set: - QFE (QNH on req);           - mm (hPa on req).</p>