

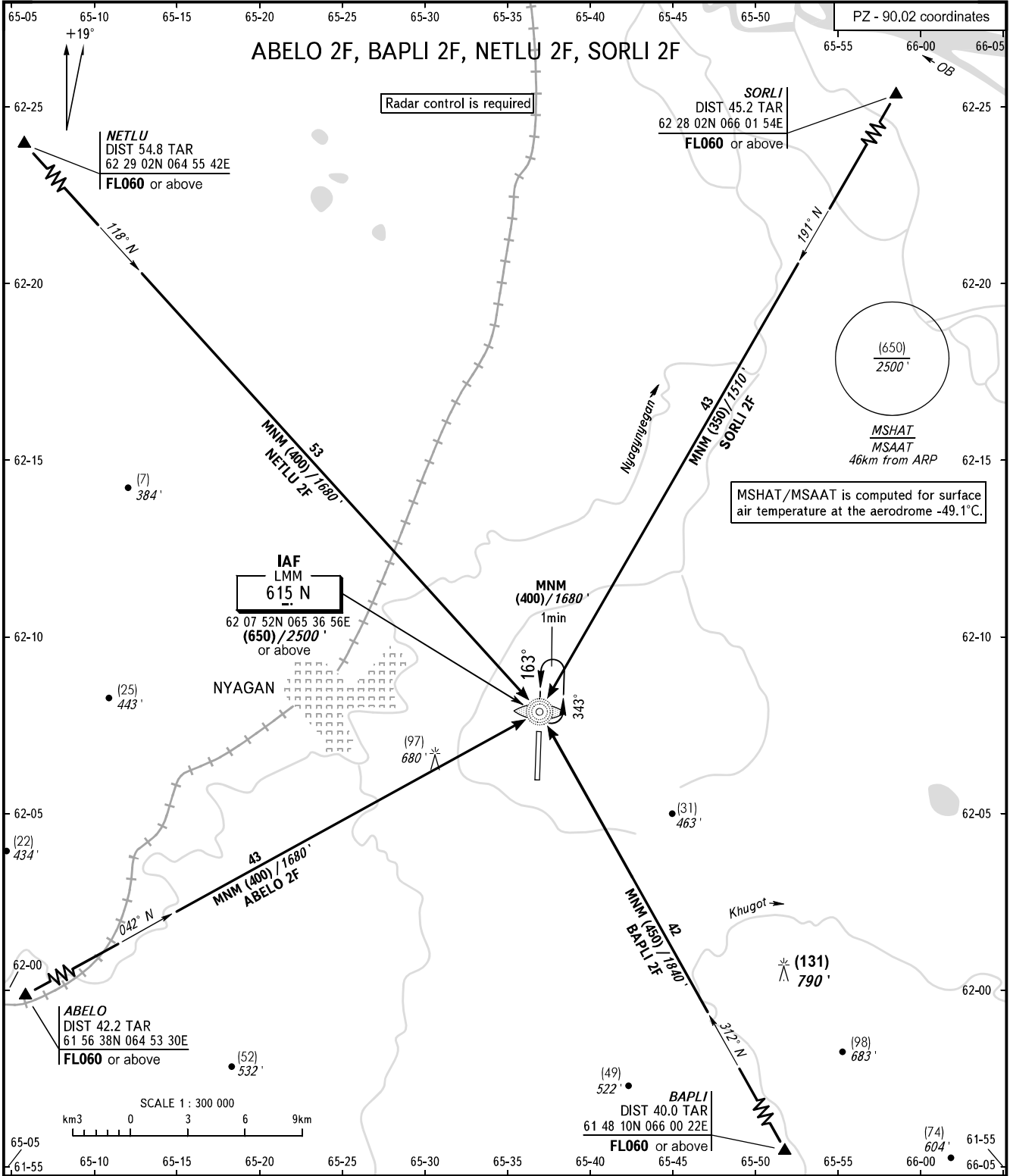
STANDARD ARRIVAL CHART
INSTRUMENT (STAR) - ICAO

NYAGAN, RUSSIA

NYAGAN

RWY 16

TRANSITION
LEVEL: **1**



TOWER 122.300

WARNING
TAR reads zero at ARP.

- 1** TRANSITION LEVEL:
- FL050 when QFE is 760mm mercury column (1013 hPa) or above;
 - FL060 when QFE is less than 760mm mercury column (1013 hPa), but 733mm mercury column (977 hPa) or above;
 - FL070 when QFE is less than 733mm mercury column (977 hPa).

BEARINGS AND TRACKS ARE MAGNETIC
HEIGHTS IN METRES
ALTITUDES IN **FEET**
ELEVATIONS IN METRES AND **FEET**
DISTANCES IN KILOMETRES

Alt set: - QFE (QNH on req);
- mm (hPa on req).

CHANGE: New chart