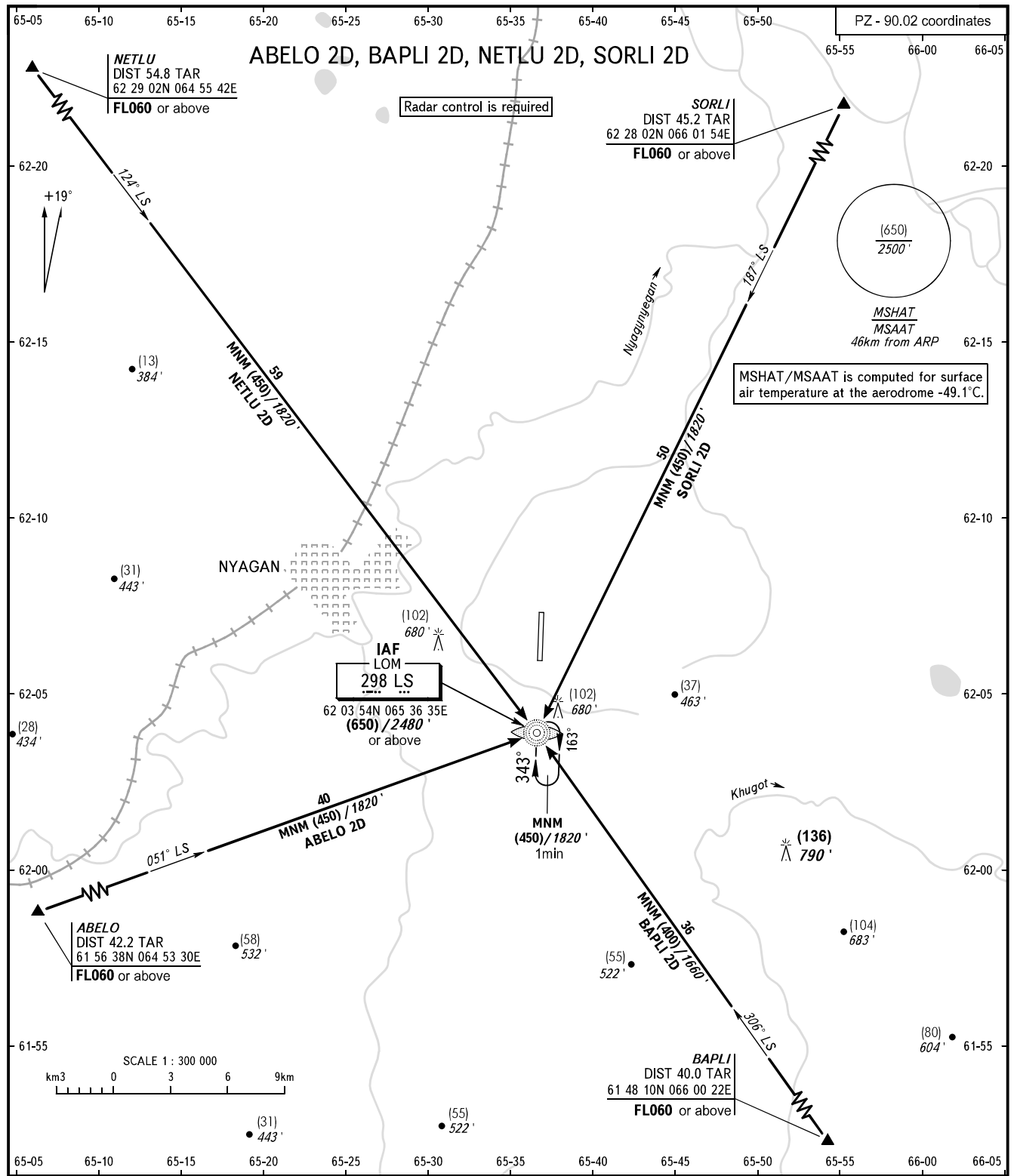


STANDARD ARRIVAL CHART
INSTRUMENT (STAR) - ICAO

NYAGAN, RUSSIA
NYAGAN
RWY 34

TRANSITION LEVEL: **1**



<p>TOWER 122.300</p> <p>BEARINGS AND TRACKS ARE MAGNETIC HEIGHTS IN METRES ALTITUDES IN FEET ELEVATIONS IN METRES AND FEET DISTANCES IN KILOMETRES</p>	<p>WARNING TAR reads zero at ARP.</p> <p>Alt set: - QFE (QNH on req); - mm (hPa on req).</p>	<p>1 TRANSITION LEVEL: - FL050 when QFE is 760mm mercury column (1013 hPa) or above; - FL060 when QFE is less than 760mm mercury column (1013 hPa), but 733mm mercury column (977 hPa) or above; - FL070 when QFE is less than 733mm mercury column (977 hPa).</p>
---	---	---