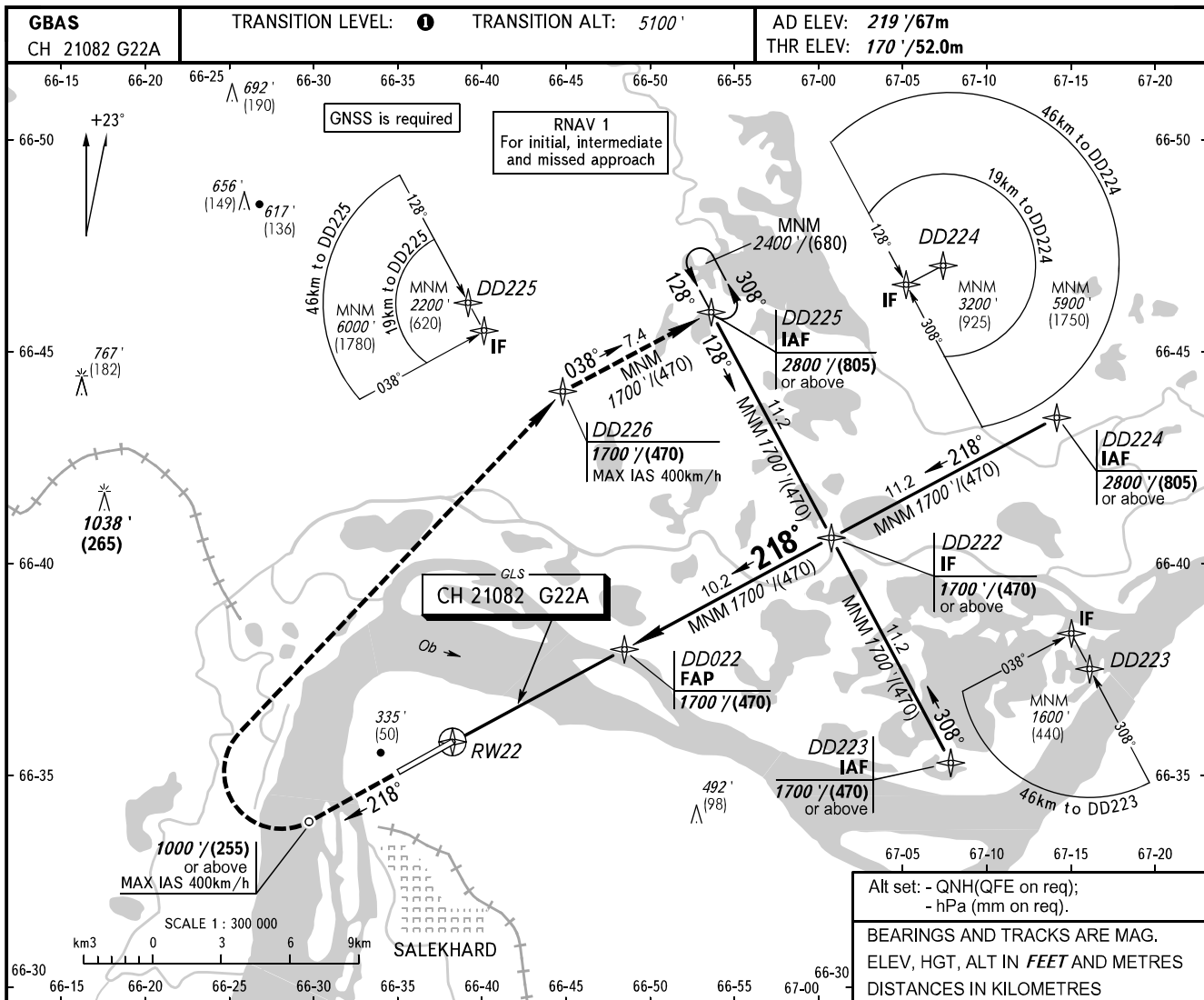


**INSTRUMENT  
APPROACH  
CHART - ICAO**

KRUG	120.800
START	118.600

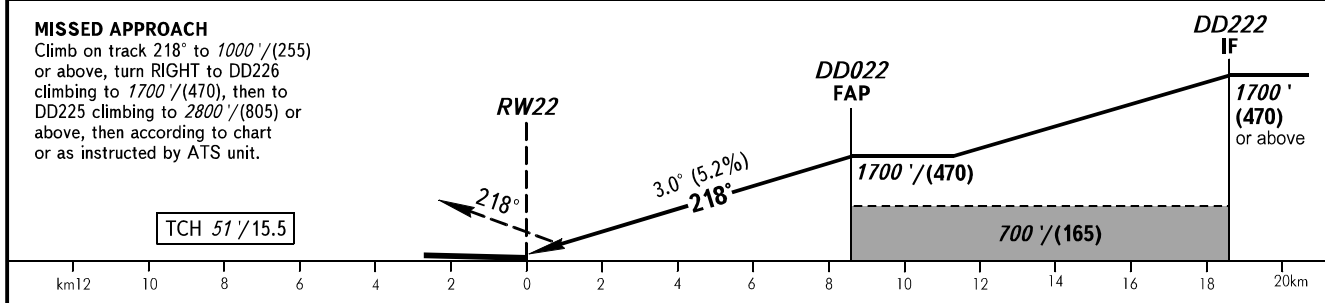
**SALEKHARD, RUSSIA**  
SALEKHARD  
GLS RWY 22



Alt set: - QNH(QFE on req);  
- hPa (mm on req).

BEARINGS AND TRACKS ARE MAG.  
ELEV, HGT, ALT IN FEET AND METRES  
DISTANCES IN KILOMETRES

DIST to RW22	2.0	4.0	6.0	8.0
ALTITUDE/HEIGHT	570' / (125)	910' / (230)	1250' / (330)	1590' / (435)



OCA(H)	A	B	C	D
Straight-in Approach	366' (196') (60)	376' (206') (65)	386' (216') (70)	396' (226') (70)
Circling	660' (440') (135)	720' (500') (155)	820' (600') (185)	910' (690') (215)

**1** TRANSITION LEVEL:  
- FL070 when QNH is 984 hPa (738mm mercury column) or above;  
- FL080 when QNH is 948 hPa (711mm mercury column) or above, but less than 984 hPa (738mm mercury column);  
- FL090 when QNH is less than 948 hPa (711mm mercury column).

**WARNING**  
Visual manoeuvring in sector 047°-210° is PROHIBITED.

GROUND SPEED	km/h	150	180	210	240	270	300	330	360	390	420	450
RATE OF DESCENT	m/s	2.2	2.6	3.1	3.5	3.9	4.4	4.8	5.2	5.7	6.1	6.6
	ft/min	433	512	610	689	768	866	945	1024	1122	1201	1299