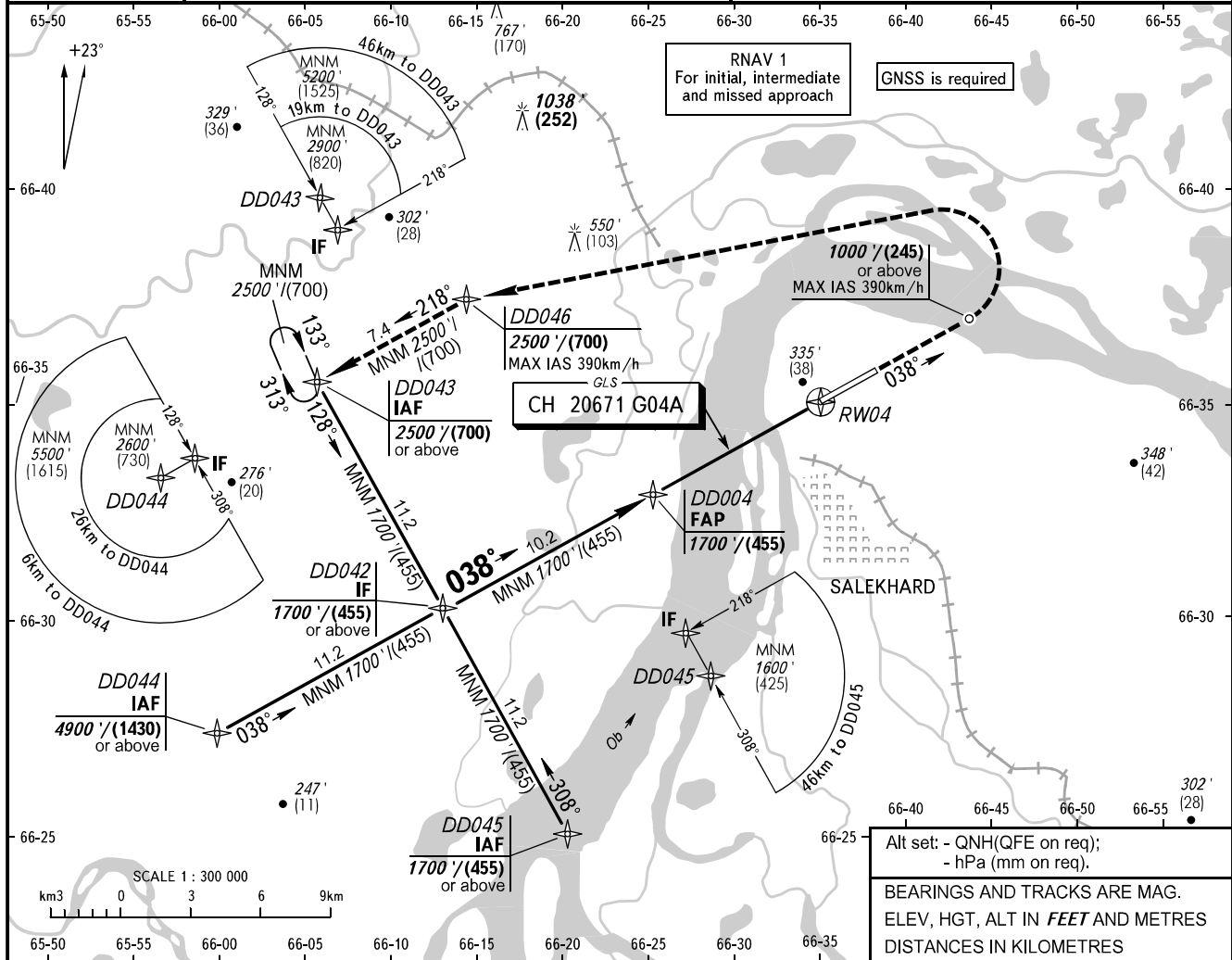


**INSTRUMENT  
APPROACH  
CHART - ICAO**

KRUG **120.800**  
START **118.600**

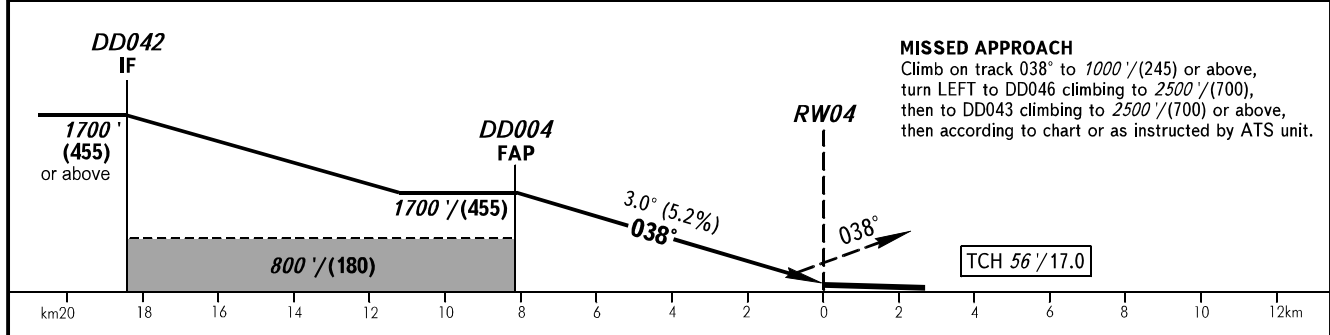
**SALEKHARD, RUSSIA**  
SALEKHARD  
GLS RWY 04

<b>GBAS</b> CH 20671 G04A	TRANSITION LEVEL: <b>1</b>	TRANSITION ALT: <b>5100'</b>	AD ELEV: <b>219' / 67m</b>
			THR ELEV: <b>212' / 64.5m</b>



Alt set: - QNH(QFE on req);  
- hPa (mm on req).  
BEARINGS AND TRACKS ARE MAG.  
ELEV, HGT, ALT IN FEET AND METRES  
DISTANCES IN KILOMETRES

DIST to RW04	8.0	6.0	4.0	2.0
ALTITUDE/HEIGHT	1630' / (435)	1290' / (330)	950' / (225)	610' / (125)



OCA(H)	A	B	C	D
Straight-in Approach	429' (217') (70)	439' (227') (70)	449' (237') (75)	459' (247') (80)
Circling	660' (440') (135)	720' (500') (155)	820' (600') (185)	910' (690') (215)

**1** TRANSITION LEVEL:  
 - FL070 when QNH is 984 hPa (738mm mercury column) or above;  
 - FL080 when QNH is 948 hPa (711mm mercury column) or above, but less than 984 hPa (738mm mercury column);  
 - FL090 when QNH is less than 948 hPa (711mm mercury column).  
**WARNING**  
 Visual manoeuvring in sector 047°-210° is PROHIBITED.

GROUND SPEED	km/h	150	180	210	240	270	300	330	360	390	420	450
	m/s	2.2	2.6	3.1	3.5	3.9	4.4	4.8	5.2	5.7	6.1	6.6
RATE OF DESCENT	ft/min	433	512	610	689	768	866	945	1024	1122	1201	1299

CHANGE: NIL