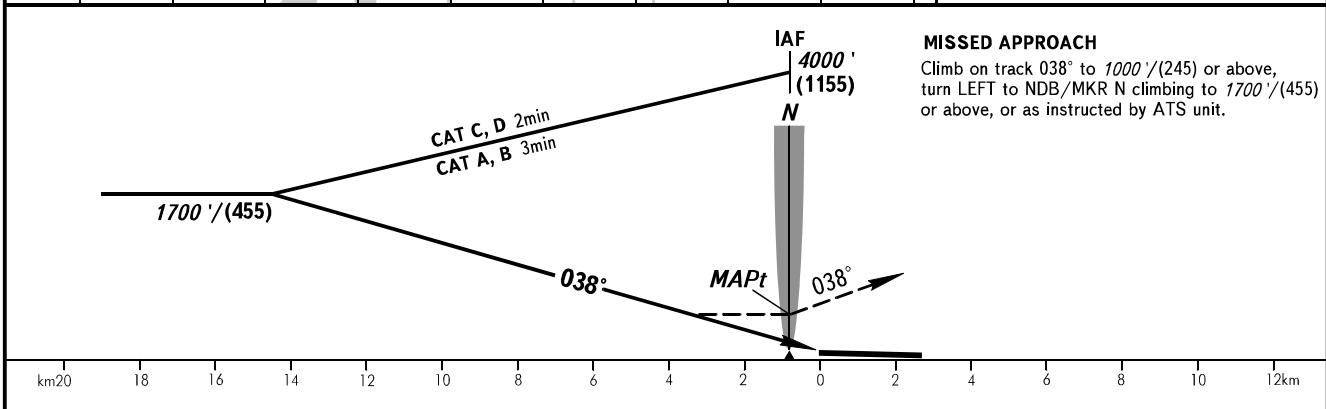
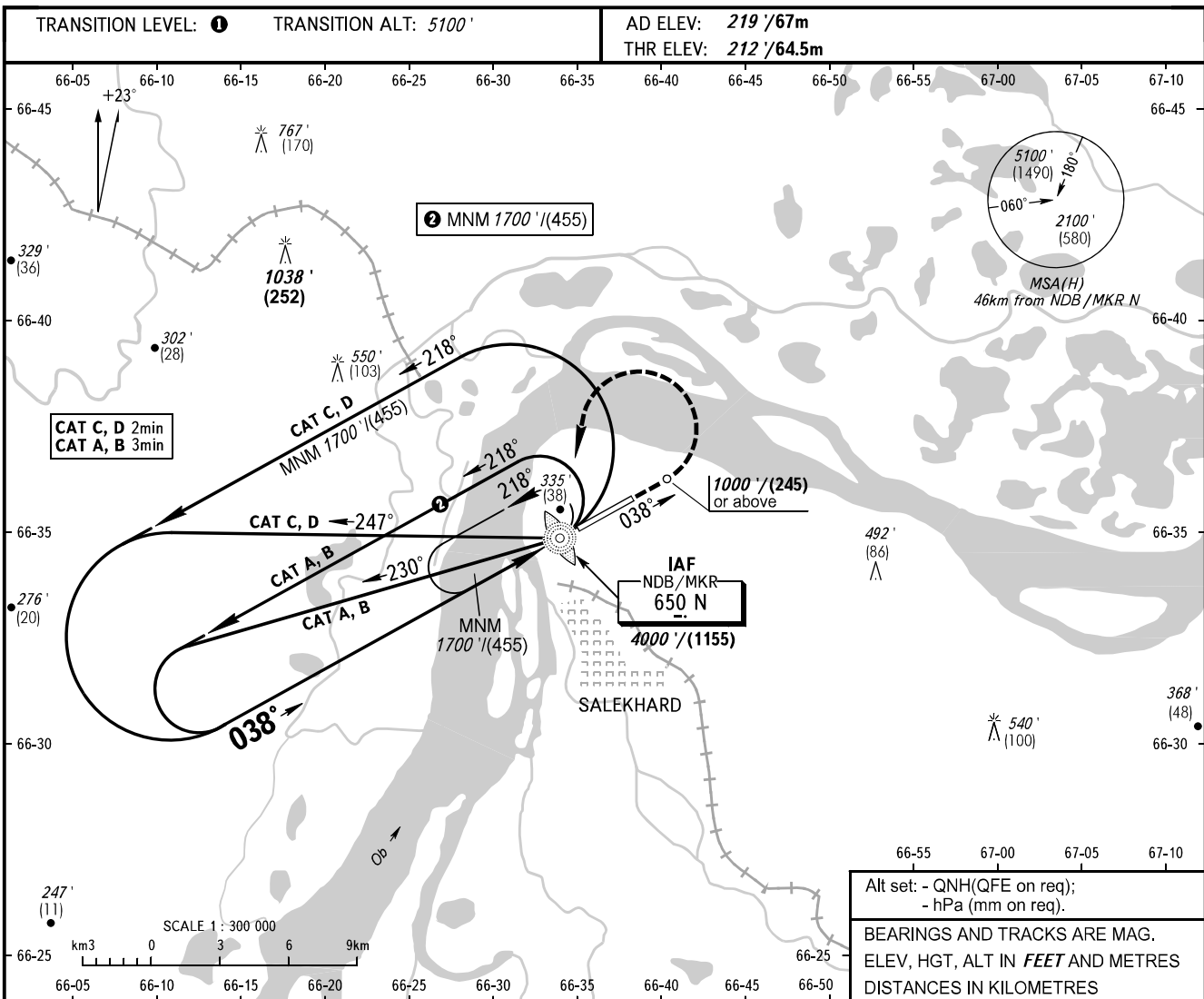


**INSTRUMENT
APPROACH
CHART - ICAO**

KRUG	120.800
START	118.600

SALEKHARD, RUSSIA
SALEKHARD
NDB Y RWY 04



OCA(H)		A	B	C	D
Straight-in Approach		630' (410')/(130)	630' (410')/(130)	630' (410')/(130)	630' (410')/(130)
Circling		660' (440')/(135)	720' (500')/(155)	820' (600')/(185)	910' (690')/(215)

① TRANSITION LEVEL:
- FL070 when QNH is 984 hPa (738mm mercury column) or above;
- FL080 when QNH is 948 hPa (711mm mercury column) or above, but less than 984 hPa (738mm mercury column);
- FL090 when QNH is less than 948 hPa (711mm mercury column).

WARNING
Visual manoeuvring in sector 047°-210° is PROHIBITED.

CHANGE: New chart