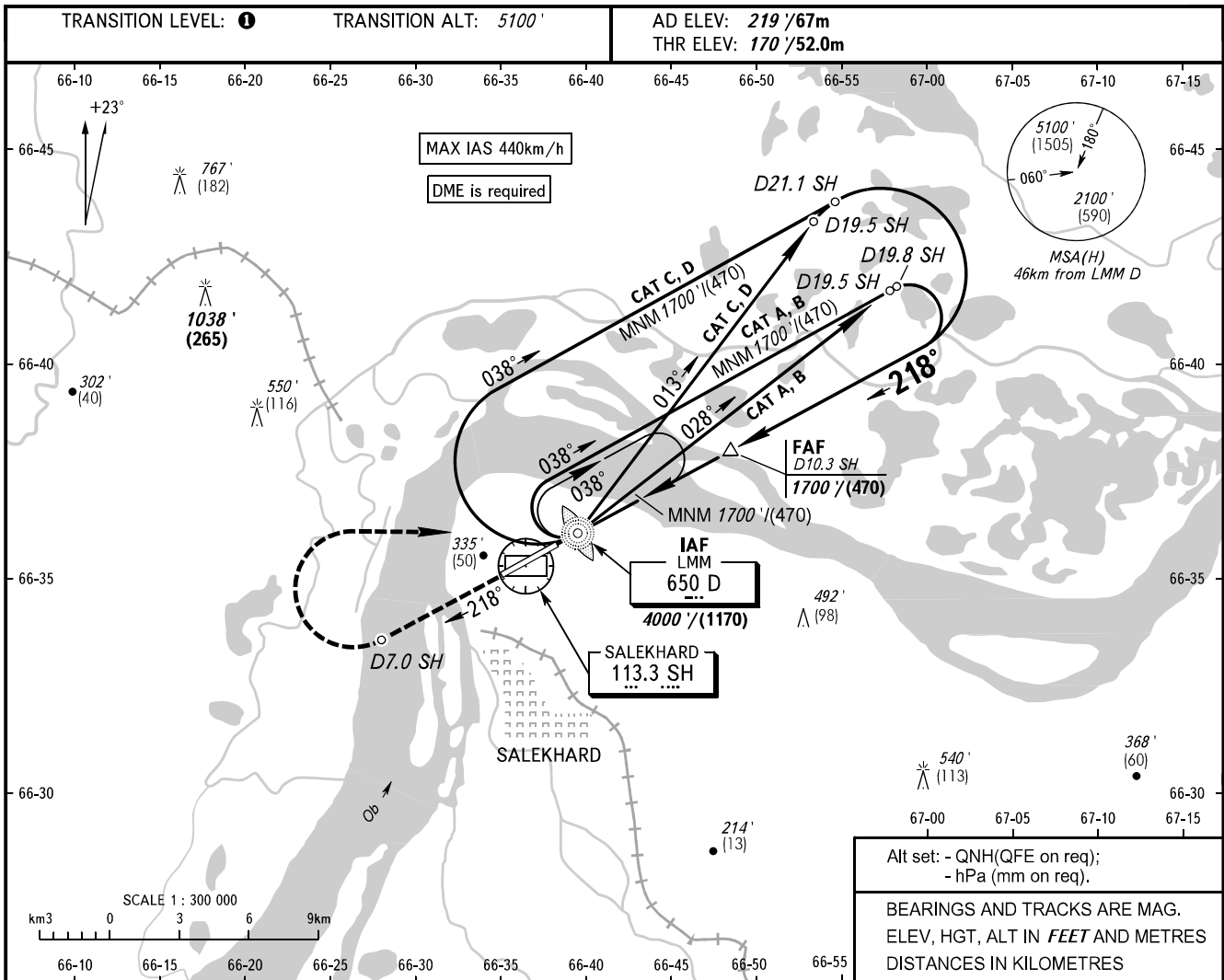


**INSTRUMENT  
APPROACH  
CHART - ICAO**

**SALEKHARD, RUSSIA  
SALEKHARD  
NDB Z RWY 22**

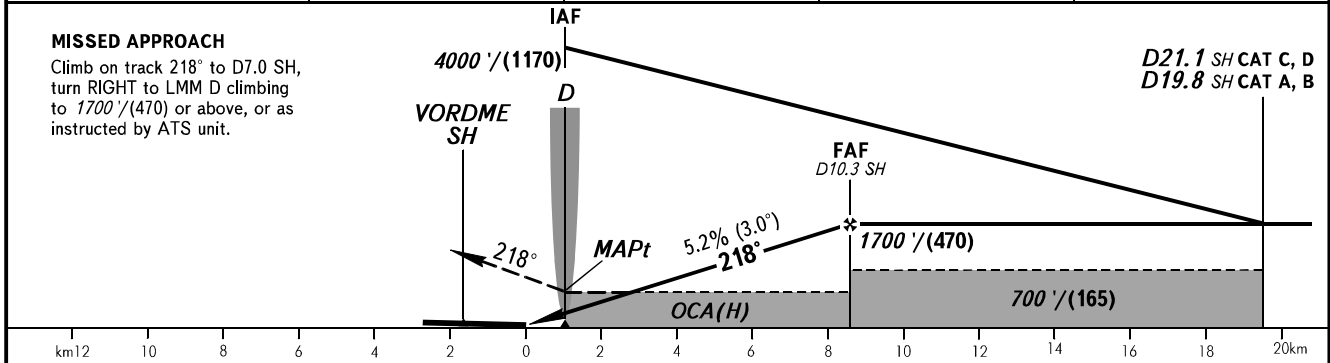
KRUG	120.800
START	118.600



Alt set: - QNH(QFE on req);  
- hPa (mm on req).

BEARINGS AND TRACKS ARE MAG.  
ELEV, HGT, ALT IN FEET AND METRES  
DISTANCES IN KILOMETRES

DME SH	4.0	6.0	8.0	10.0
ALTITUDE/HEIGHT	630' / (145)	970' / (245)	1320' / (355)	1660' / (455)



OCA(H)	A	B	C	D
Straight-in Approach	510' (330') (105)	510' (330') (105)	510' (330') (105)	510' (330') (105)
Circling	660' (440') (135)	720' (500') (155)	820' (600') (185)	910' (690') (215)

**1** TRANSITION LEVEL:  
- FL070 when QNH is 984 hPa (738mm mercury column) or above;  
- FL080 when QNH is 948 hPa (711mm mercury column) or above,  
but less than 984 hPa (738mm mercury column);  
- FL090 when QNH is less than 948 hPa (711mm mercury column).

**WARNING**  
Visual manoeuvring in sector 047°-210° is PROHIBITED.

GROUND SPEED	km/h	150	180	210	240	270	300	330	360	390	420	450
	m/s	2.2	2.6	3.1	3.5	3.9	4.4	4.8	5.2	5.7	6.1	6.6
RATE OF DESCENT	ft/min	433	512	610	689	768	866	945	1024	1122	1211	1299