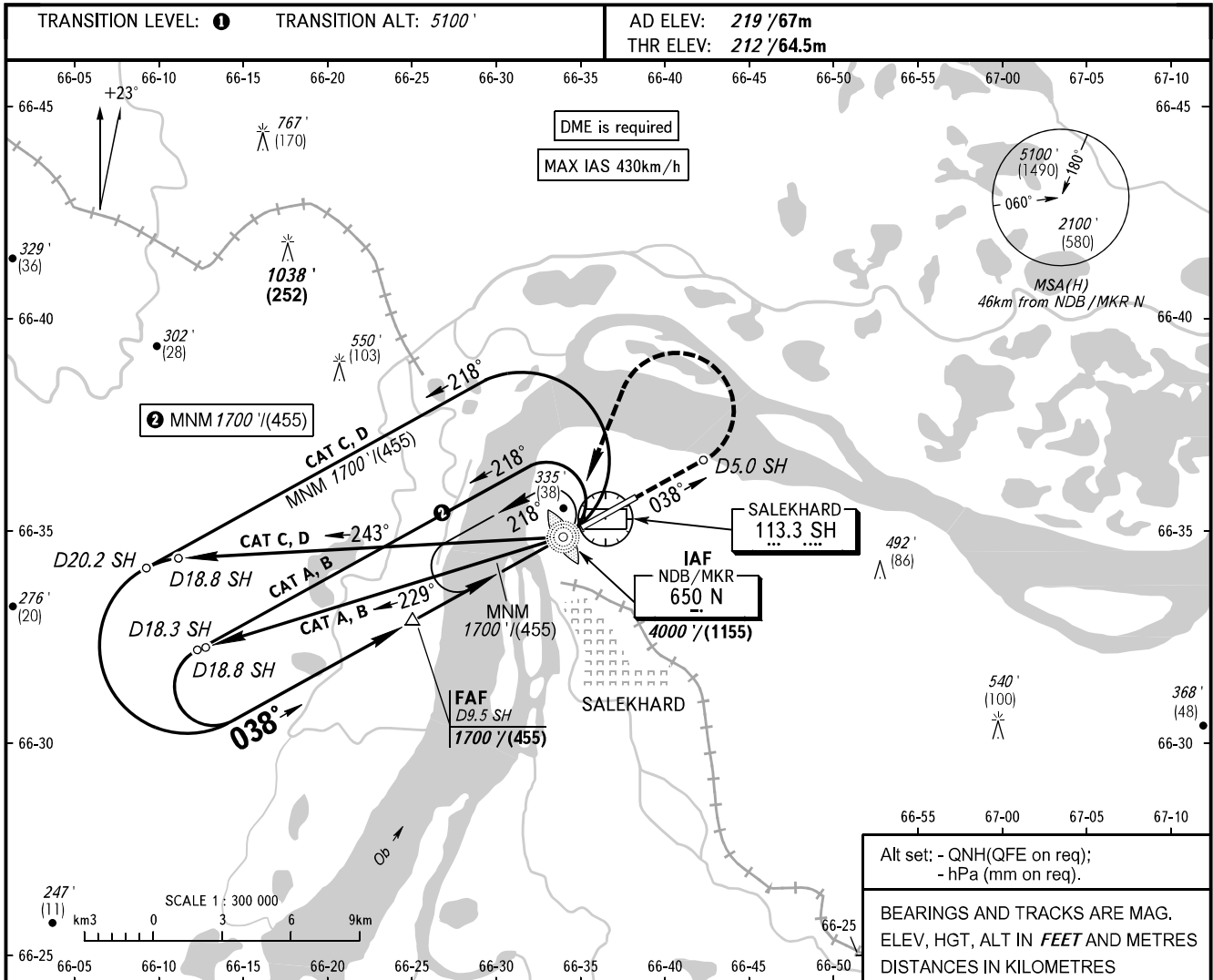


INSTRUMENT
APPROACH
CHART - ICAO

KRUG	120.800
START	118.600

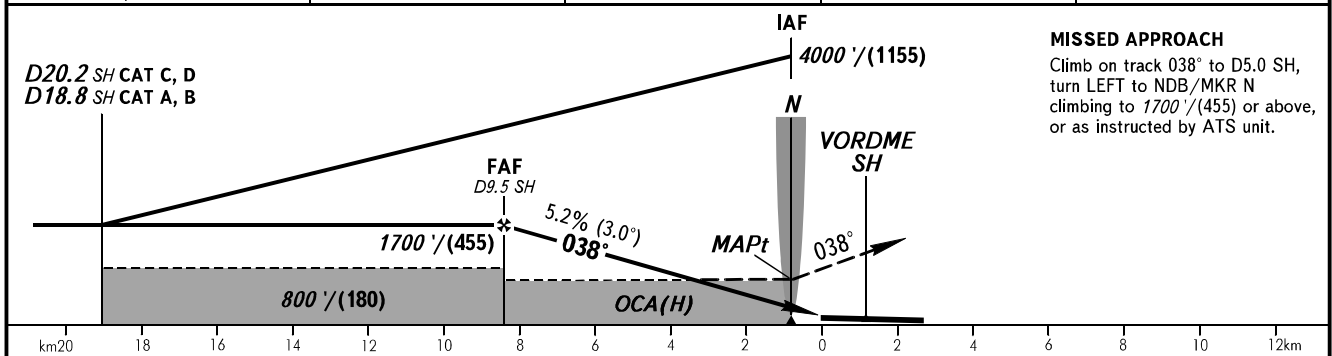
SALEKHARD, RUSSIA
SALEKHARD
NDB Z RWY 04



Alt set: - QNH(QFE on req);
- hPa (mm on req).

BEARINGS AND TRACKS ARE MAG.
ELEV, HGT, ALT IN FEET AND METRES
DISTANCES IN KILOMETRES

DME SH	9.0	7.0	5.0	3.0
ALTITUDE/HEIGHT	1610' / (430)	1270' / (325)	930' / (220)	590' / (120)



MISSED APPROACH
Climb on track 038° to D5.0 SH,
turn LEFT to NDB/MKR N
climbing to 1700' / (455) or above,
or as instructed by ATS unit.

OCA(H)		A	B	C	D	① TRANSITION LEVEL:										
Straight-in Approach		630' (410') (130)	630' (410') (130)	630' (410') (130)	630' (410') (130)	- FL070 when QNH is 984 hPa (738mm mercury column) or above; - FL080 when QNH is 948 hPa (711mm mercury column) or above, but less than 984 hPa (738mm mercury column); - FL090 when QNH is less than 948 hPa (711mm mercury column).										
	Circling	660' (440') (135)	720' (500') (155)	820' (600') (185)	910' (690') (215)	WARNING Visual manoeuvring in sector 047°-210° is PROHIBITED.										
GROUND SPEED		km/h	150	180	210	240	270	300	330	360	390	420	450			
RATE OF DESCENT		m/s	2.2	2.6	3.1	3.5	3.9	4.4	4.8	5.2	5.7	6.1	6.6			
		ft/min	433	512	610	689	768	866	945	1024	1122	1201	1299			

CHANGE: New chart