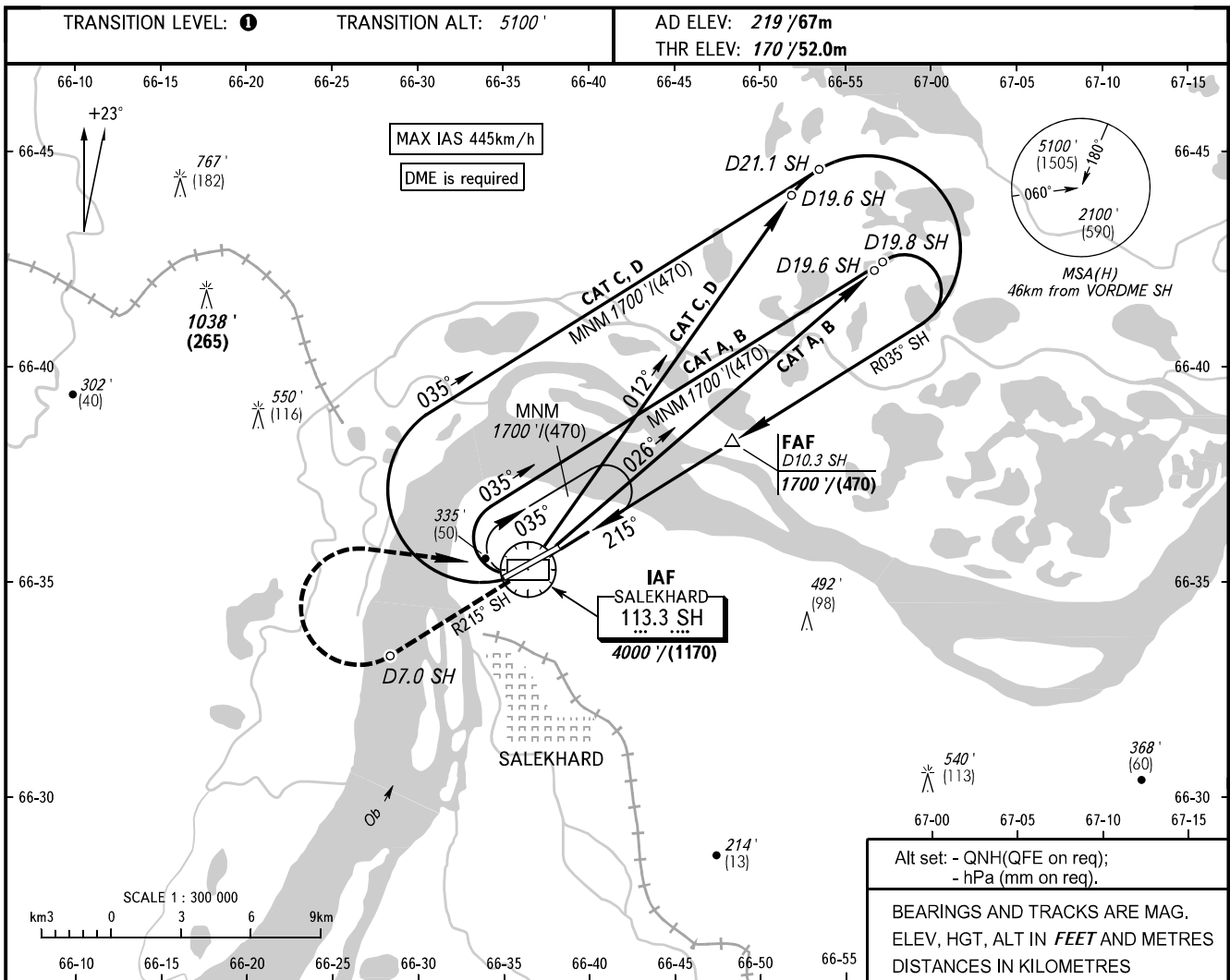


**INSTRUMENT  
APPROACH  
CHART - ICAO**

KRUG	120.800
START	118.600

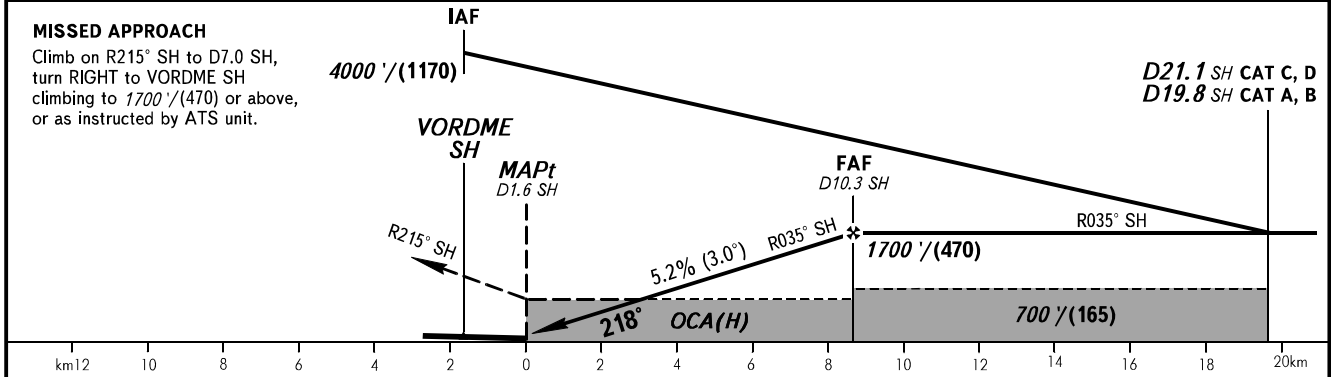
**SALEKHARD, RUSSIA**  
SALEKHARD  
VOR X RWY 22



Alt set: - QNH(QFE on req);  
- hPa (mm on req).

BEARINGS AND TRACKS ARE MAG.  
ELEV, HGT, ALT IN FEET AND METRES  
DISTANCES IN KILOMETRES

DME SH	4.0	6.0	8.0	10.0
ALTITUDE/HEIGHT	630'/(145)	970'/(245)	1320'/(355)	1660'/(455)



OCA(H)		A	B	C	D
Straight-in Approach	490' (320') (100)	490' (320') (100)	490' (320') (100)	490' (320') (100)	490' (320') (100)
Circling		660' (440') (135)	720' (500') (155)	820' (600') (185)	910' (690') (215)

**TRANSITION LEVEL:**  
- FL070 when QNH is 984 hPa (738mm mercury column) or above;  
- FL080 when QNH is 948 hPa (711mm mercury column) or above, but less than 984 hPa (738mm mercury column);  
- FL090 when QNH is less than 948 hPa (711mm mercury column).

**WARNING**  
Visual manoeuvring in sector 047°-210° is PROHIBITED.  
Final approach track is offset by 3° from the RWY centre line.

GROUND SPEED	km/h	150	180	210	240	270	300	330	360	390	420	450
RATE OF DESCENT	m/s	2.2	2.6	3.1	3.5	3.9	4.4	4.8	5.2	5.7	6.1	6.6
	ft/min	433	512	610	689	768	866	945	1024	1122	1201	1299