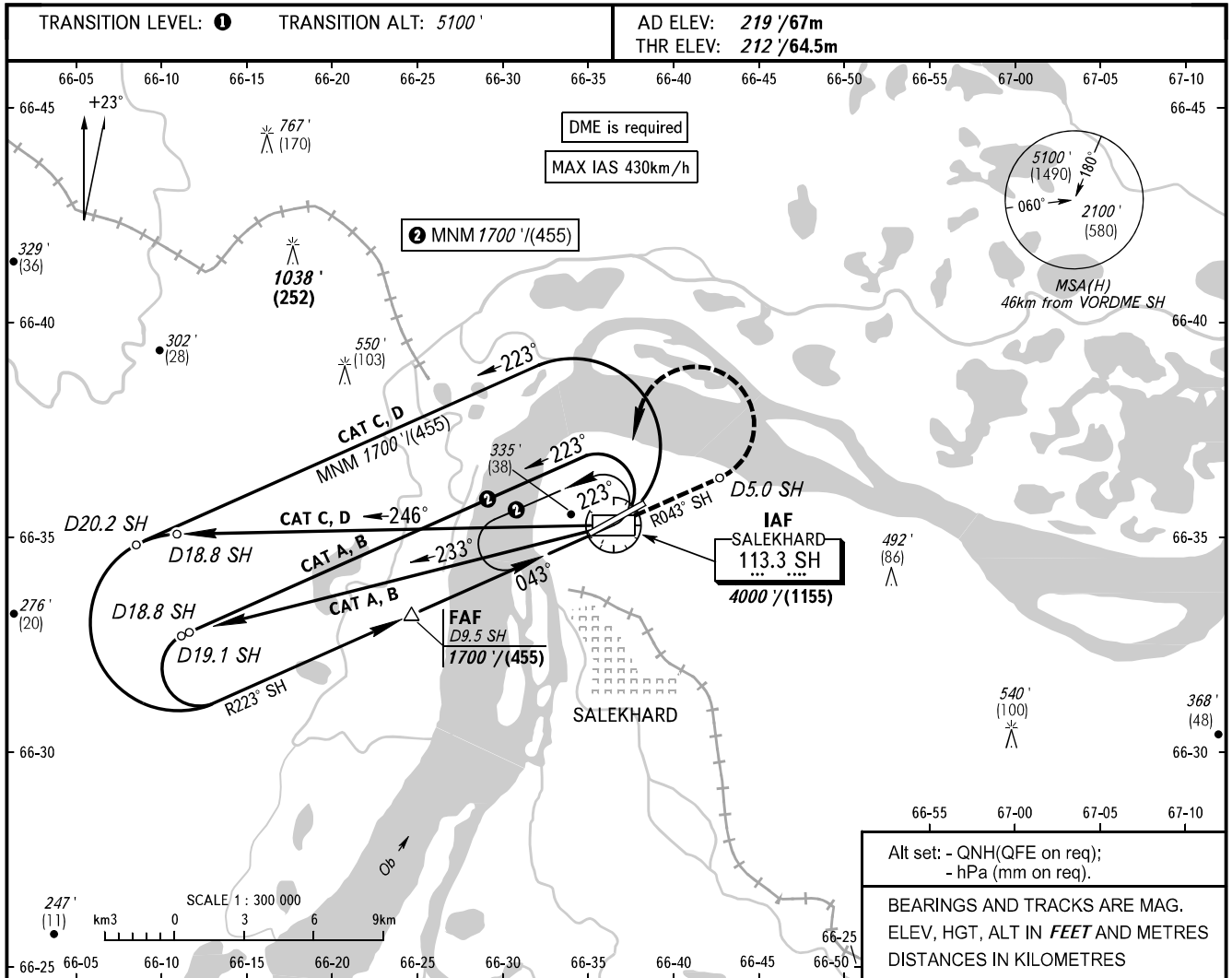


INSTRUMENT
APPROACH
CHART - ICAO

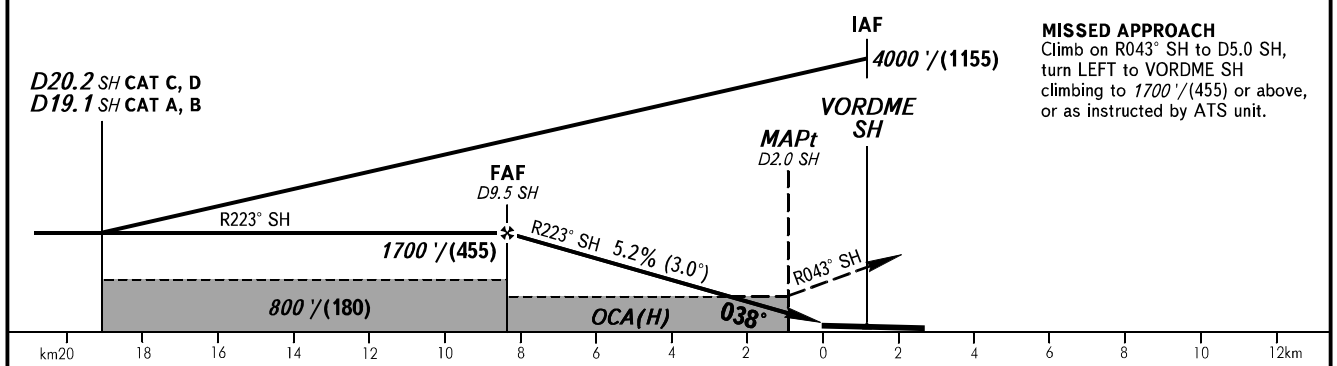
KRUG	120.800
START	118.600

SALEKHARD, RUSSIA
SALEKHARD
VOR X RWY 04



Alt set: - QNH(QFE on req); - hPa (mm on req).			
BEARINGS AND TRACKS ARE MAG. ELEV, HGT, ALT IN FEET AND METRES DISTANCES IN KILOMETRES			

DME SH	9.0	7.0	5.0	3.0
ALTITUDE/HEIGHT	1610'/(430)	1270'/(325)	930'/(220)	590'/(120)



MISSED APPROACH
Climb on R043° SH to D5.0 SH, turn LEFT to VORDME SH climbing to 1700'/(455) or above, or as instructed by ATS unit.

OCA(H)		A	B	C	D
Straight-in Approach		580' (370') (115)	580' (370') (115)	580' (370') (115)	580' (370') (115)
	Circling	660' (440') (135)	720' (500') (155)	820' (600') (185)	910' (690') (215)

1 TRANSITION LEVEL:
- FLO70 when QNH is 984 hPa (738mm mercury column) or above;
- FLO80 when QNH is 948 hPa (711mm mercury column) or above, but less than 984 hPa (738mm mercury column);
- FLO90 when QNH is less than 948 hPa (711mm mercury column).

WARNING
Visual manoeuvring in sector 047°-210° is PROHIBITED.
Final approach track is offset by 5° from the RWY centre line.

GROUND SPEED	km/h	150	180	210	240	270	300	330	360	390	420	450
RATE OF DESCENT	m/s	2.2	2.6	3.1	3.5	3.9	4.4	4.8	5.2	5.7	6.1	6.6
	ft/min	433	512	610	689	768	866	945	1024	1122	1201	1299

CHANGE: New chart