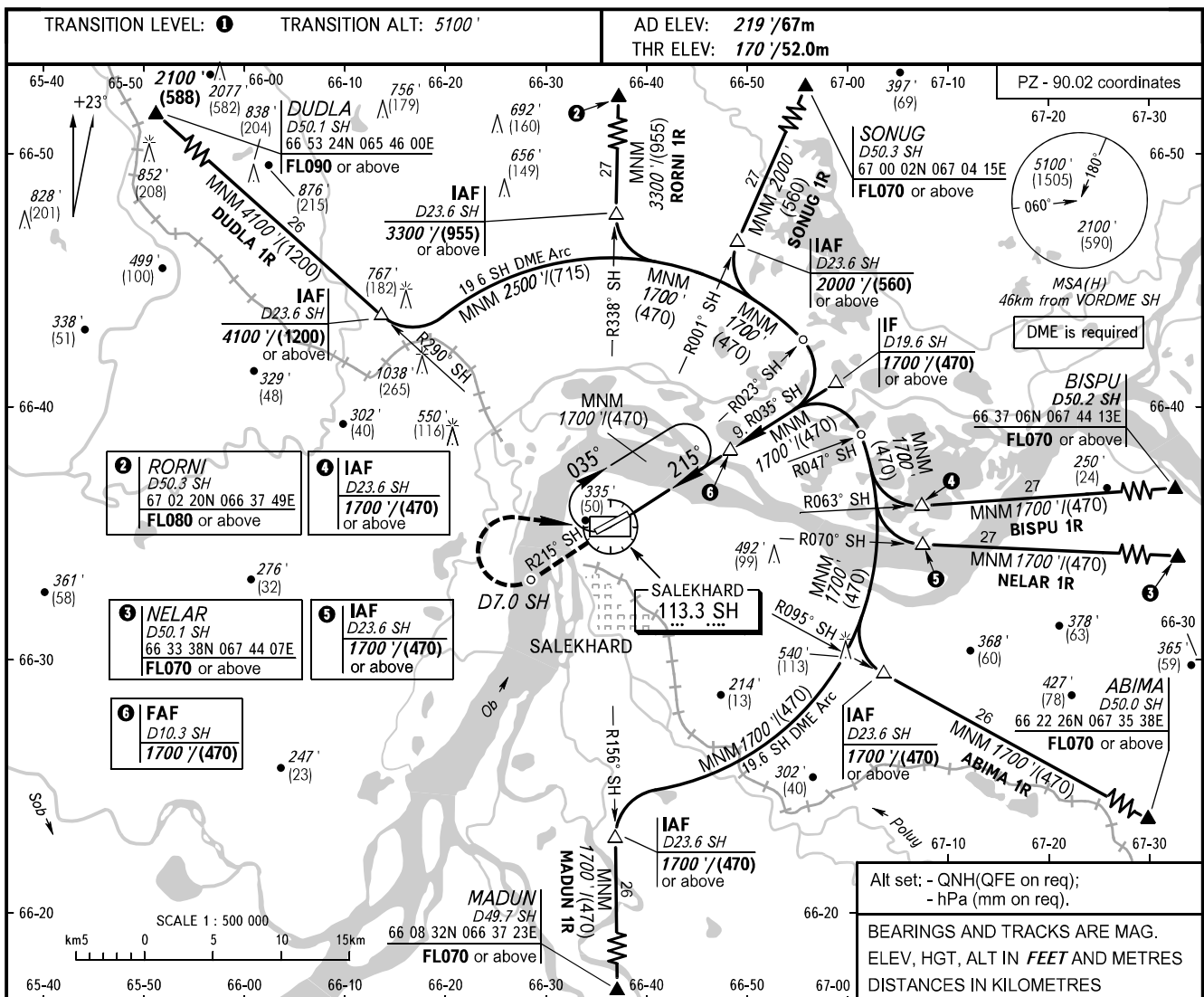


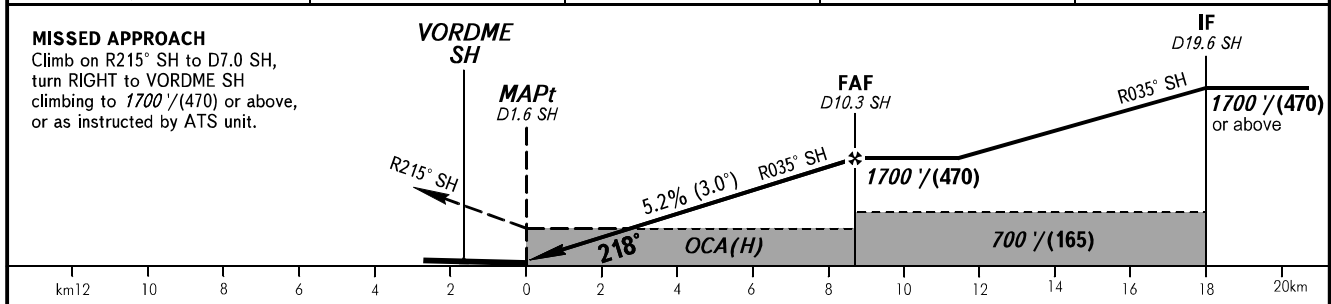
**INSTRUMENT
APPROACH
CHART - ICAO**

KRUG **120.800**
START **118.600**

SALEKHARD, RUSSIA
SALEKHARD
VOR Z RWY 22



DME SH	4.0	6.0	8.0	10.0
ALTITUDE/HEIGHT	630' / (145)	970' / (245)	1320' / (355)	1660' / (455)



OCA(H)		A	B	C	D								
Straight-in Approach		490' (320') (100)	490' (320') (100)	490' (320') (100)	490' (320') (100)								
Circling		660' (440') (135)	720' (500') (155)	820' (600') (185)	910' (690') (215)								
GROUND SPEED		km/h	150	180	210	240	270	300	330	360	390	420	450
RATE OF DESCENT		m/s	2.2	2.6	3.1	3.5	3.9	4.4	4.8	5.2	5.7	6.1	6.6
		ft/min	433	512	610	689	768	866	945	1024	1122	1201	1299

1 TRANSITION LEVEL:
- FL070 when QNH is 984 hPa (738mm mercury column) or above;
- FL080 when QNH is 948 hPa (711mm mercury column) or above, but less than 984 hPa (738mm mercury column);
- FL090 when QNH is less than 948 hPa (711mm mercury column).

WARNING
Visual manoeuvring in sector 047°-210° is PROHIBITED.
Final approach track is offset by 3° from the RWY centre line.