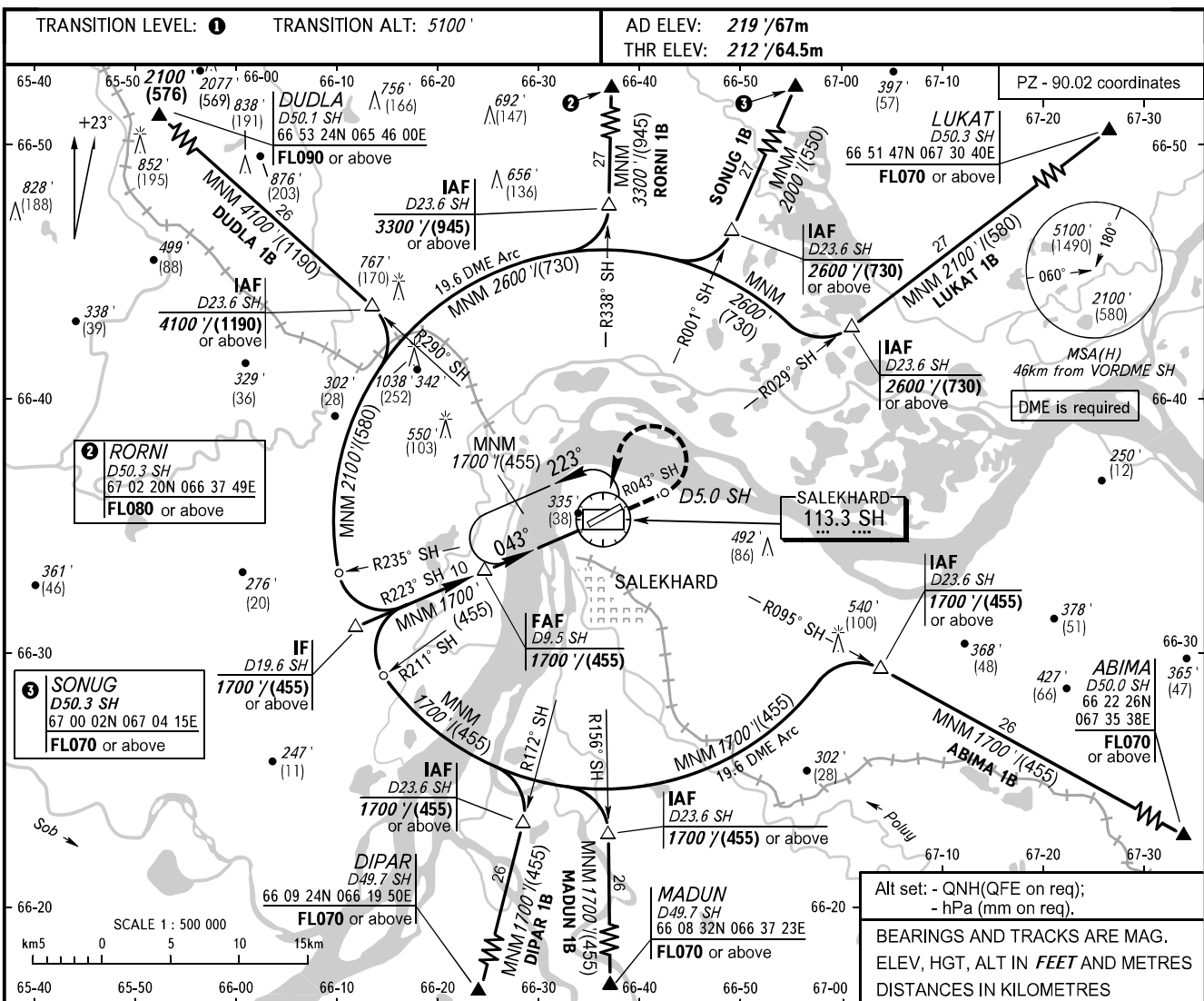


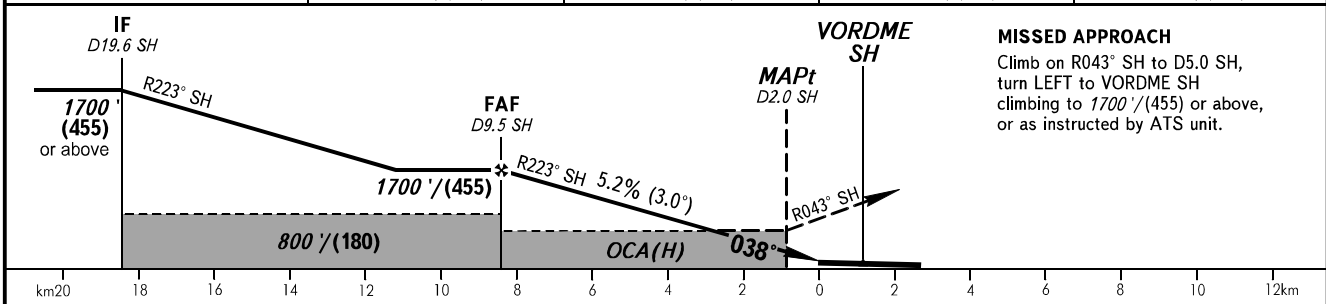
INSTRUMENT  
APPROACH  
CHART - ICAO

KRUG	120.800
START	118.600

SALEKHARD, RUSSIA  
SALEKHARD  
VOR Z RWY 04



DME SH	9.0	7.0	5.0	3.0
ALTITUDE/HEIGHT	1610'/(430)	1270'/(325)	930'/(220)	590'/(120)



OCA(H)	A	B	C	D
Straight-in Approach	580' (370') (115)	580' (370') (115)	580' (370') (115)	580' (370') (115)
Circling	660' (440') (135)	720' (500') (155)	820' (600') (185)	910' (690') (215)

**1** TRANSITION LEVEL:  
- FL070 when QNH is 984 hPa (738mm mercury column) or above;  
- FL080 when QNH is 948 hPa (711mm mercury column) or above, but less than 984 hPa (738mm mercury column);  
- FL090 when QNH is less than 948 hPa (711mm mercury column).

**WARNING**  
Visual manoeuvring in sector 047°-210° is PROHIBITED.  
Final approach track is offset by 5° from the RWY centre line.

GROUND SPEED	km/h	150	180	210	240	270	300	330	360	390	420	450
RATE OF DESCENT	m/s	2.2	2.6	3.1	3.5	3.9	4.4	4.8	5.2	5.7	6.1	6.6
	ft/min	433	512	610	689	768	866	945	1024	1122	1201	1299

CHANGE: New chart