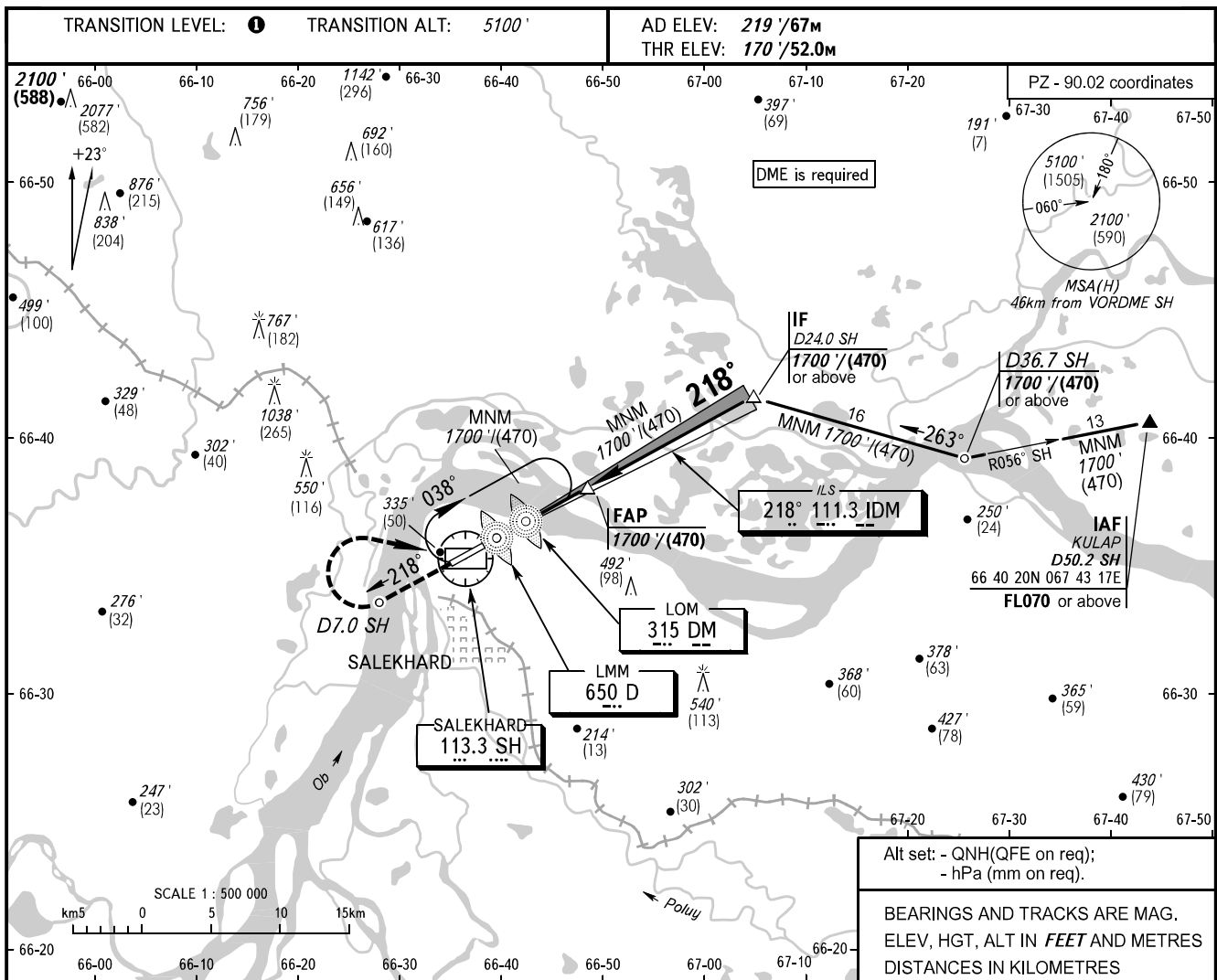


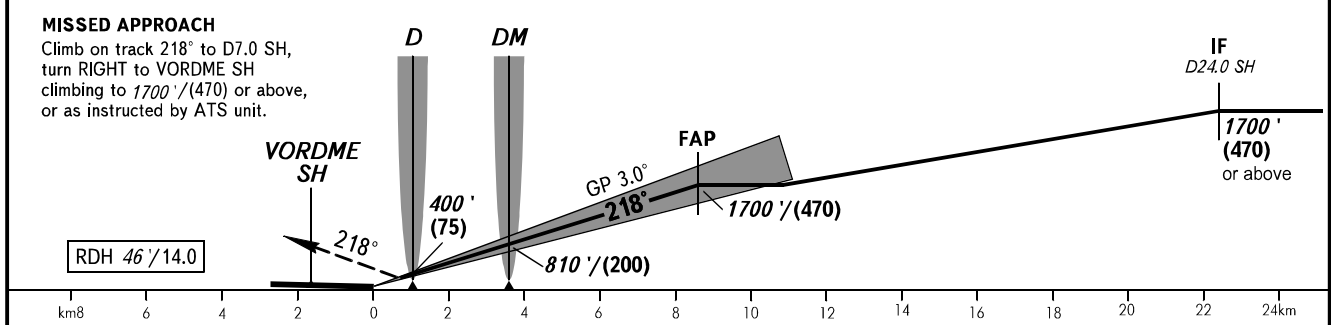
**INSTRUMENT
APPROACH
CHART - ICAO**

**SALEKHARD, RUSSIA
SALEKHARD
ILS V CAT I RWY 22**

KRUG	120.800
START	118.600



DME SH	4.0	6.0	8.0	10.0
ALTITUDE/HEIGHT	630' / (145)	970' / (245)	1320' / (355)	1660' / (455)



OCA(H)		A	B	C	D								
Straight-in Approach	CAT I	366' (196') (60)	376' (206') (65)	386' (216') (70)	396' (226') (70)	TRANSITION LEVEL: - FLO70 when QNH is 984 hPa (738mm mercury column) or above; - FLO80 when QNH is 948 hPa (711mm mercury column) or above, but less than 984 hPa (738mm mercury column); - FLO90 when QNH is less than 948 hPa (711mm mercury column).							
	Circling	660' (440') (135)	720' (500') (155)	820' (600') (185)	910' (690') (215)	WARNING Visual manoeuvring in sector 047°-210° is PROHIBITED.							
GROUND SPEED		km/h	150	180	210	240	270	300	330	360	390	420	450
RATE OF DESCENT		m/s	2.2	2.6	3.1	3.5	3.9	4.4	4.8	5.2	5.7	6.1	6.6
		ft/min	433	512	610	689	768	866	945	1024	1122	1201	1299