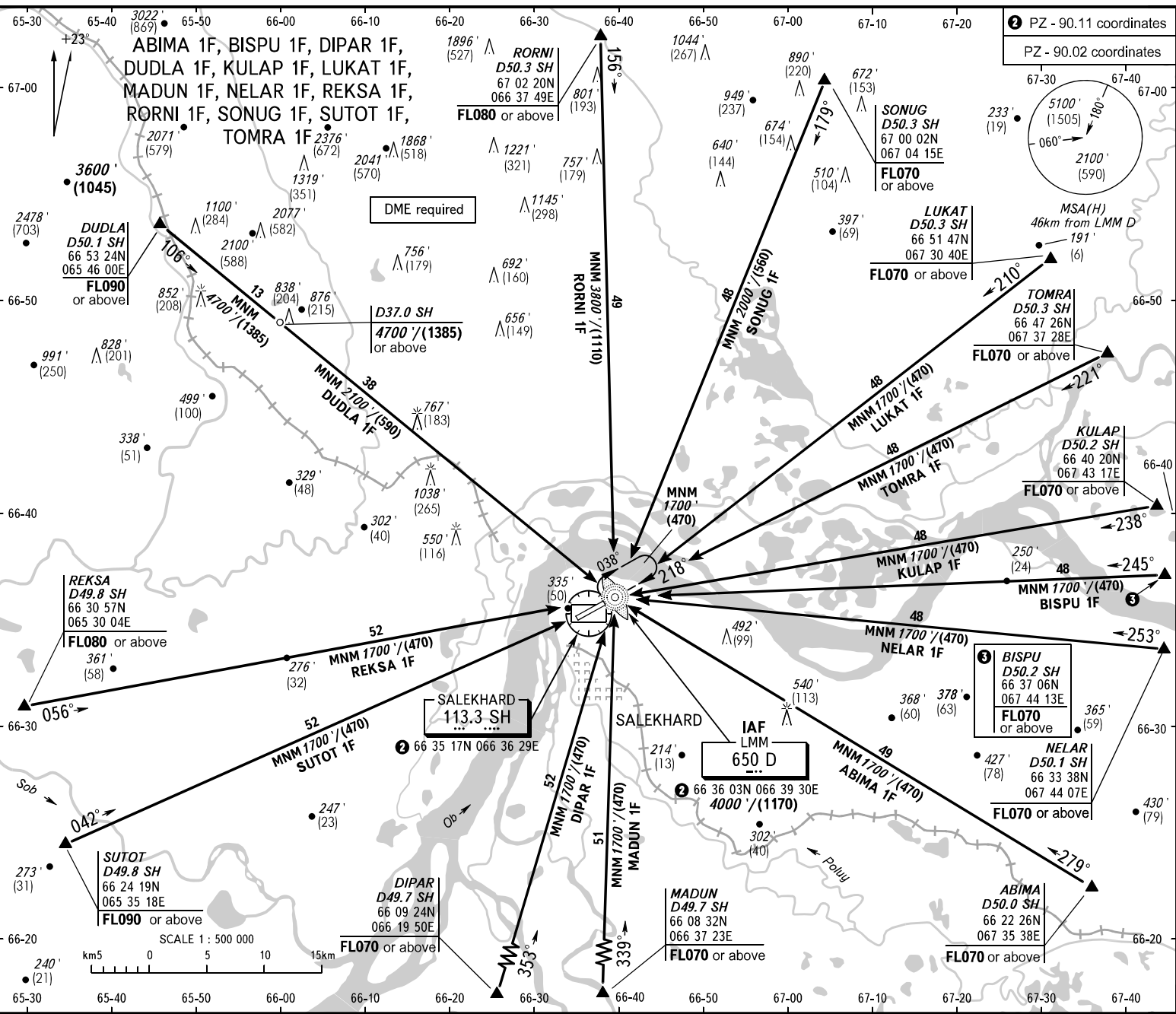
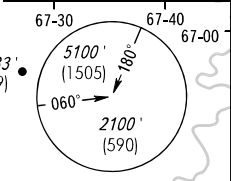


STANDARD ARRIVAL CHART
INSTRUMENT (STAR) - ICAO

SALEKHARD, RUSSIA
SALEKHARD
RWY 22

TRANSITION
LEVEL: 1

PZ - 90.11 coordinates
PZ - 90.02 coordinates



BEARINGS AND TRACKS ARE MAGNETIC
ALTITUDES AND ELEVATIONS IN FEET
HEIGHTS IN METRES
DISTANCES IN KILOMETRES

All set: -QNH/QNH on req);
-hPa (mm on req).

1 TRANSITION LEVEL:

- FL070 when QNH is 984 hPa (738mm mercury column) or above;
- FL080 when QNH is 948 hPa (711mm mercury column) or above, but less than 984 hPa (738mm mercury column);
- FL090 when QNH is less than 948 hPa (711mm mercury column).