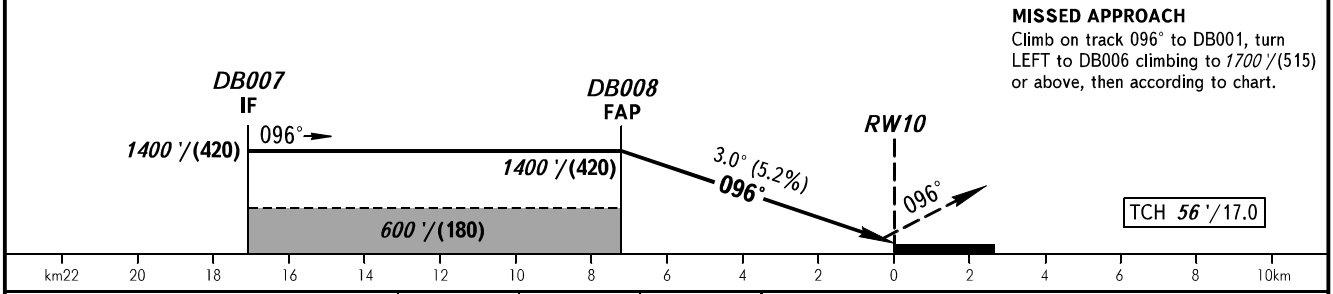
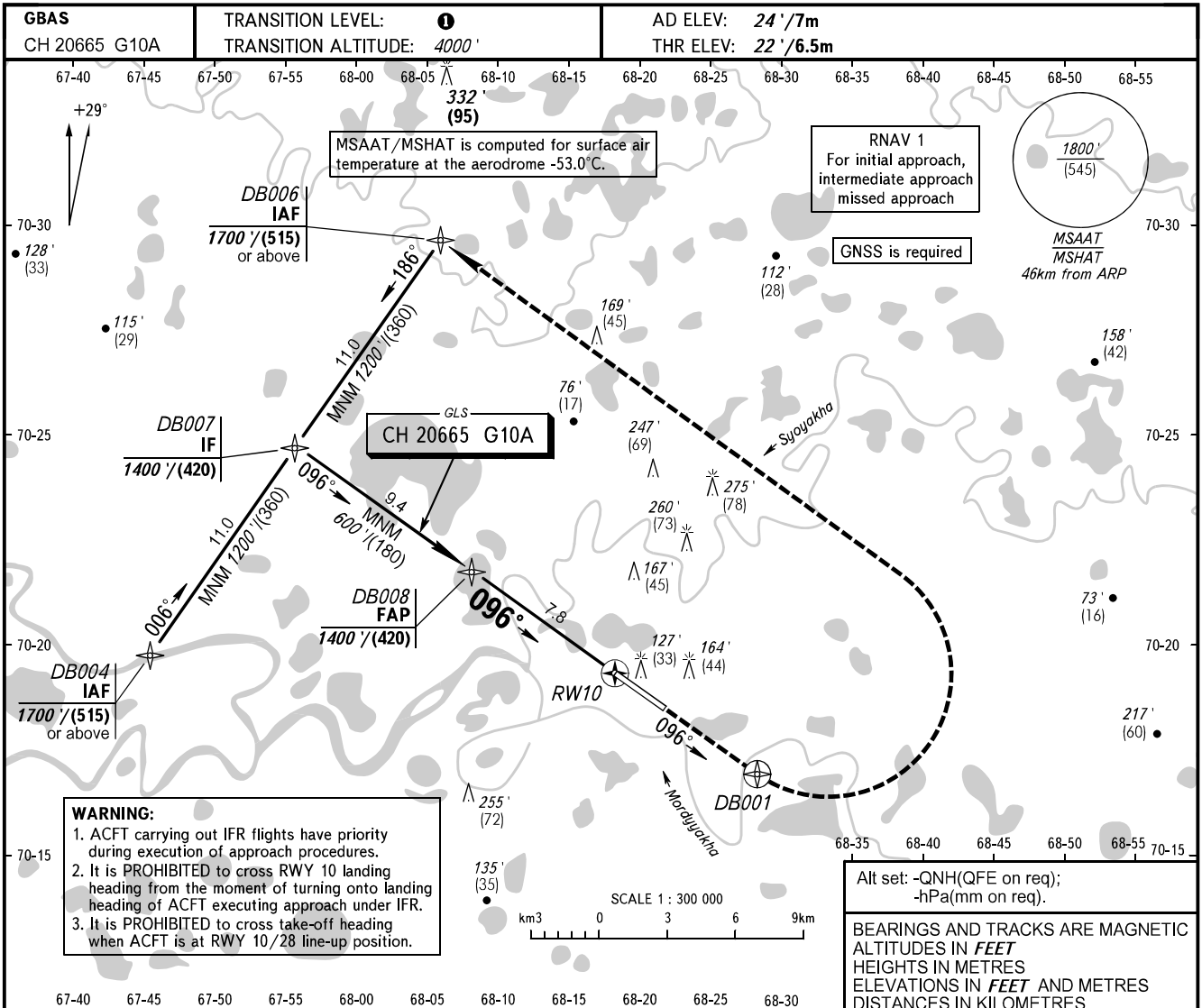


**INSTRUMENT
APPROACH
CHART - ICAO**

INFORMATSIYA 126.000

**BOVANENKOVO, RUSSIA
BOVANENKOVO
GLS RWY 10**



OCA(H)		A	B	C	D	TRANSITION LEVEL:					
Straight-in Approach	CAT I	177' (155') (48)	187' (165') (51)	196' (174') (54)	206' (184') (57)	- FL060 when QNH is 1013 hPa (760mm mercury column) or above; - FL070 when QNH is 977 hPa (733mm mercury column) or above, but less than 1013 hPa (760mm mercury column); - FL080 when QNH is less than 977 hPa (733mm mercury column).					
		460' (440') (135)	520' (500') (155)	660' (640') (195)	720' (700') (215)						
Circling		460' (440') (135)	520' (500') (155)	660' (640') (195)	720' (700') (215)						
GROUND SPEED		km/h	150	180	210	240	270	300	330	360	390
RATE OF DESCENT		m/s	2.2	2.6	3.1	3.5	3.9	4.4	4.8	5.2	5.6
		ft/min	427	512	597	682	768	853	938	1024	1109

CHANGE: New chart