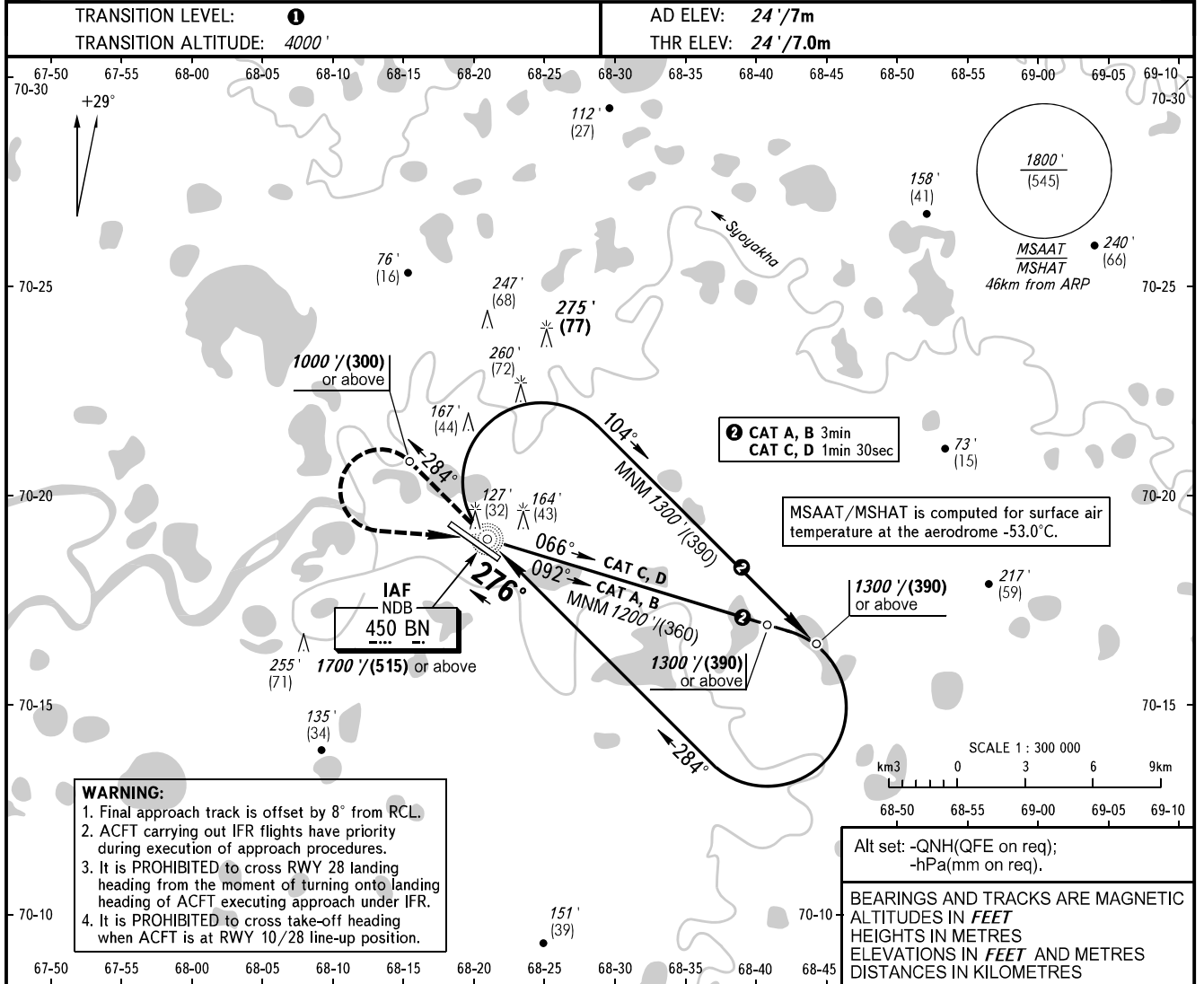


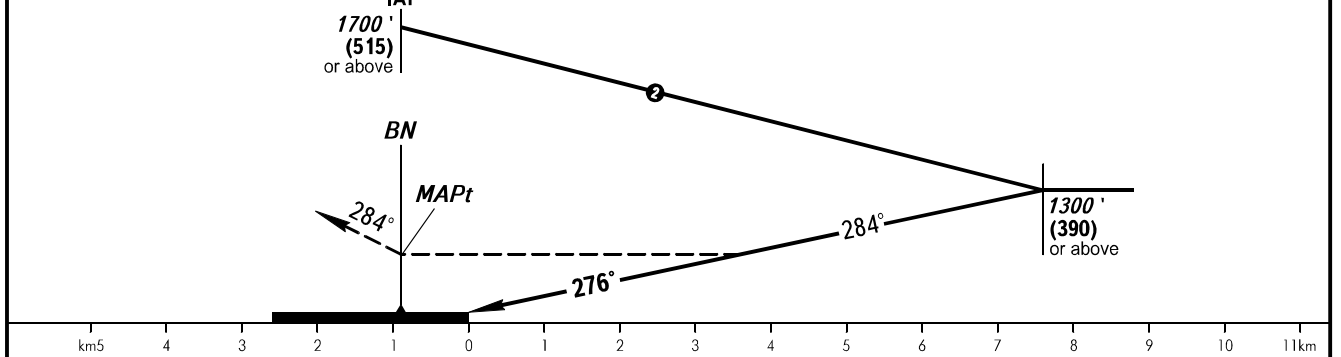
**INSTRUMENT
APPROACH
CHART - ICAO**

INFORMATSIYA **126.000**

BOVANENKOVO, RUSSIA
BOVANENKOVO
NDB RWY 28



MISSED APPROACH
Climb on track 284° to 1000' / (300) or above, turn LEFT to NDB BN climbing to 1300' / (390) or above, then according to chart.



OCA(H)		A	B	C	D
Straight-in Approach		460' (440') (135)	460' (440') (135)	460' (440') (135)	460' (440') (135)
Circling		460' (440') (135)	520' (500') (155)	660' (640') (195)	720' (700') (215)

① TRANSITION LEVEL:

- FL060 when QNH is 1013 hPa (760mm mercury column) or above;
- FL070 when QNH is 977 hPa (733mm mercury column) or above, but less than 1013 hPa (760mm mercury column);
- FL080 when QNH is less than 977 hPa (733mm mercury column).