

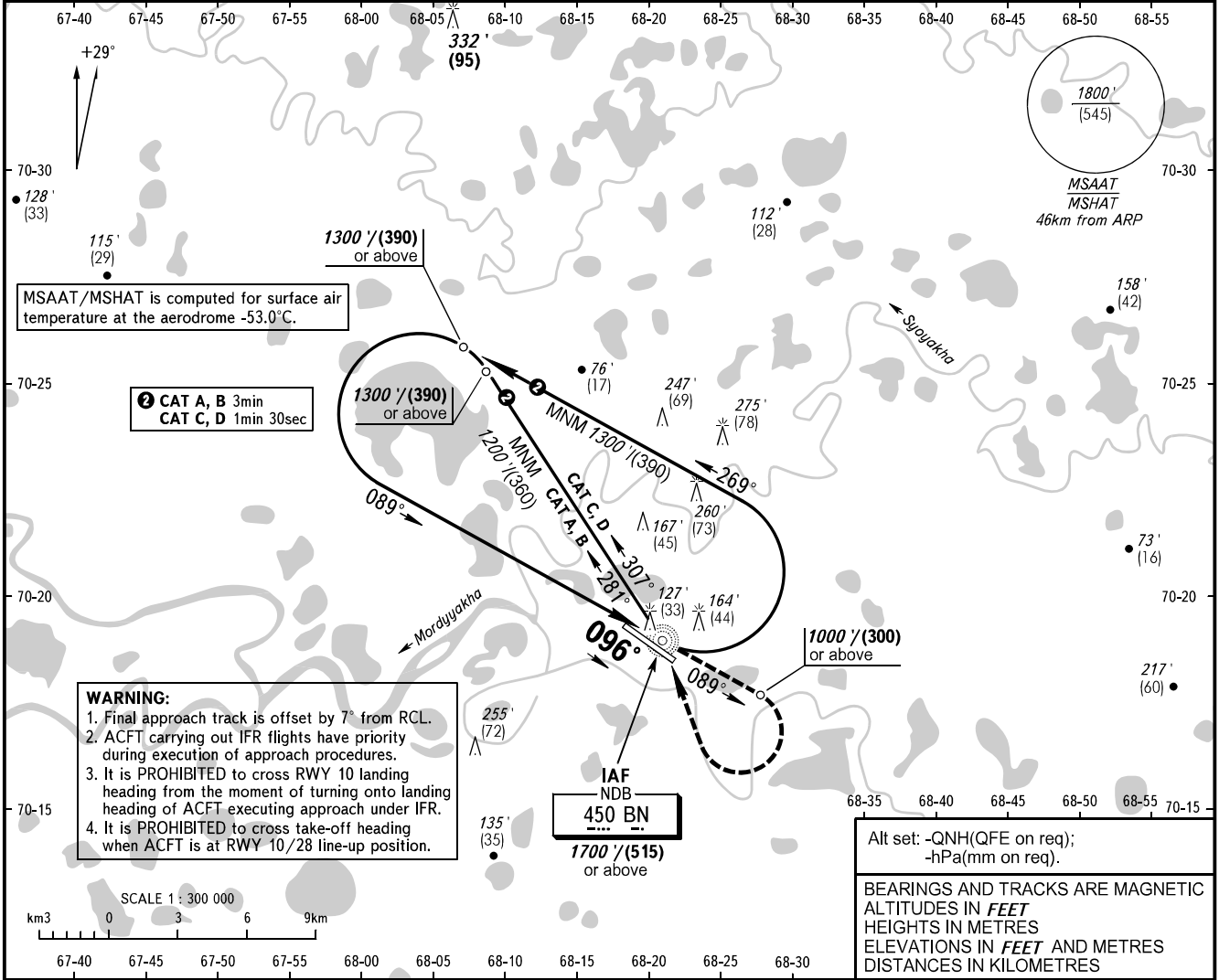
**INSTRUMENT  
APPROACH  
CHART - ICAO**

INFORMATSIYA 126.000

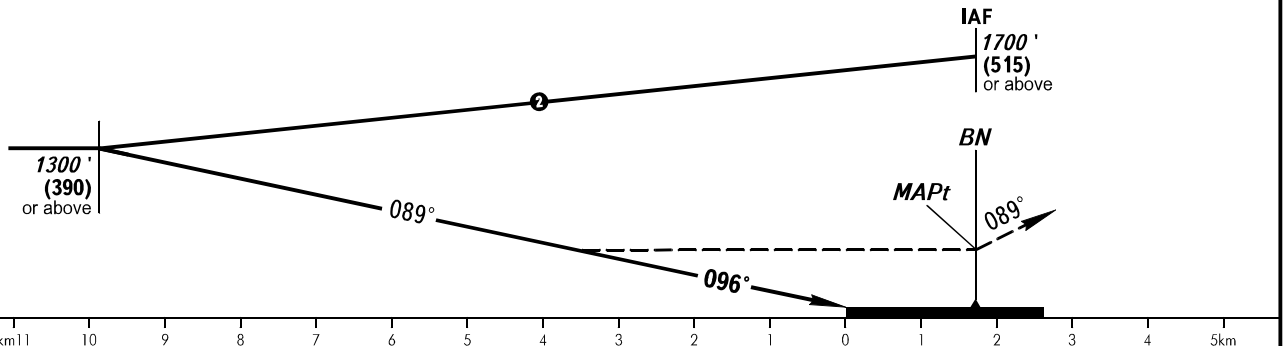
**BOVANENKOVO, RUSSIA**  
BOVANENKOVO  
NDB RWY 10

TRANSITION LEVEL: **1**  
TRANSITION ALTITUDE: 4000'

AD ELEV: 24'/7m  
THR ELEV: 22'/6.5m



**MISSED APPROACH**  
Climb on track 089° to 1000'/(300) or above, turn RIGHT to NDB BN climbing to 1300'/(390) or above, then according to chart.



OCA(H)		A	B	C	D
Straight-in Approach		460' (440') (135)	460' (440') (135)	460' (440') (135)	460' (440') (135)
Circling		460' (440') (135)	520' (500') (155)	660' (640') (195)	720' (700') (215)

**1** TRANSITION LEVEL:  
- FL060 when QNH is 1013 hPa (760mm mercury column) or above;  
- FL070 when QNH is 977 hPa (733mm mercury column) or above, but less than 1013 hPa (760mm mercury column);  
- FL080 when QNH is less than 977 hPa (733mm mercury column).

CHANGE: New chart