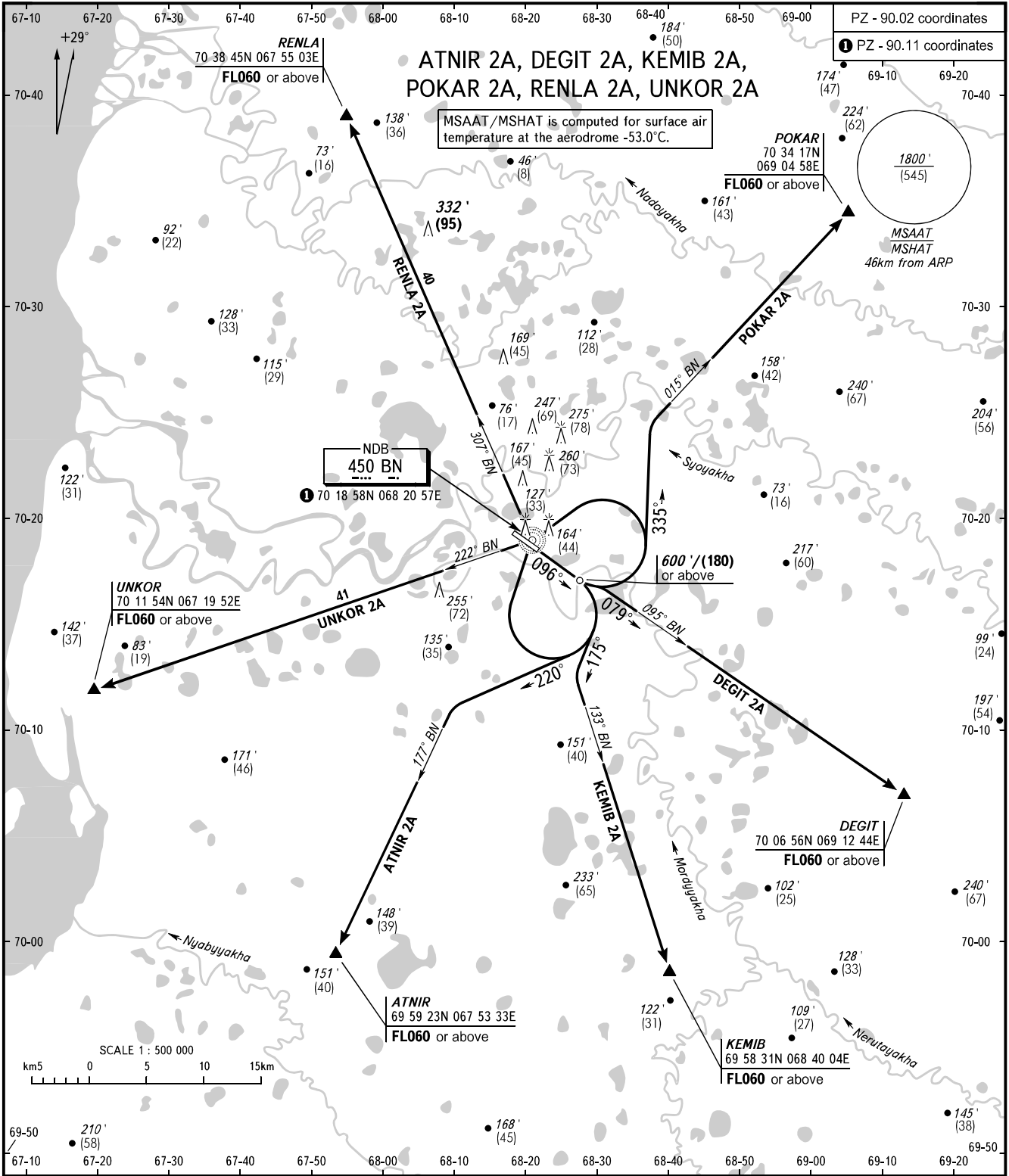


STANDARD DEPARTURE CHART
INSTRUMENT (SID) - ICAO

TRANSITION ALT: 4000'

BOVANENKOVO, RUSSIA
BOVANENKOVO
RWY 10



PZ - 90.02 coordinates
① PZ - 90.11 coordinates

MSAAT /MSHAT is computed for surface air temperature at the aerodrome -53.0°C.

NDB
450 BN
① 70 18 58N 068 20 57E

600'/(180) or above

DEGIT
70 06 56N 069 12 44E
FL060 or above

ATNIR
69 59 23N 067 53 33E
FL060 or above

KEMIB
69 58 31N 068 40 04E
FL060 or above

INFORMATSIYA 126.000

WARNING
The minimum climb gradients required due to the airspace structure:
- 3.8% up to FL060 for SID ATNIR 2A;
- 4.7% up to FL060 for SID KEMIB 2A;
- 5.0% up to FL060 for SID DEGIT 2A;
- 3.8% up to FL060 for SID POKAR 2A.

BEARINGS AND TRACKS ARE MAGNETIC
ALTITUDES IN FEET
HEIGHTS IN METRES
ELEVATIONS IN FEET AND METRES
DISTANCES IN KILOMETRES

Alt set: -QNH(QFE on req);
-hPa(mm on req).

CHANGE: KEMIB 2A