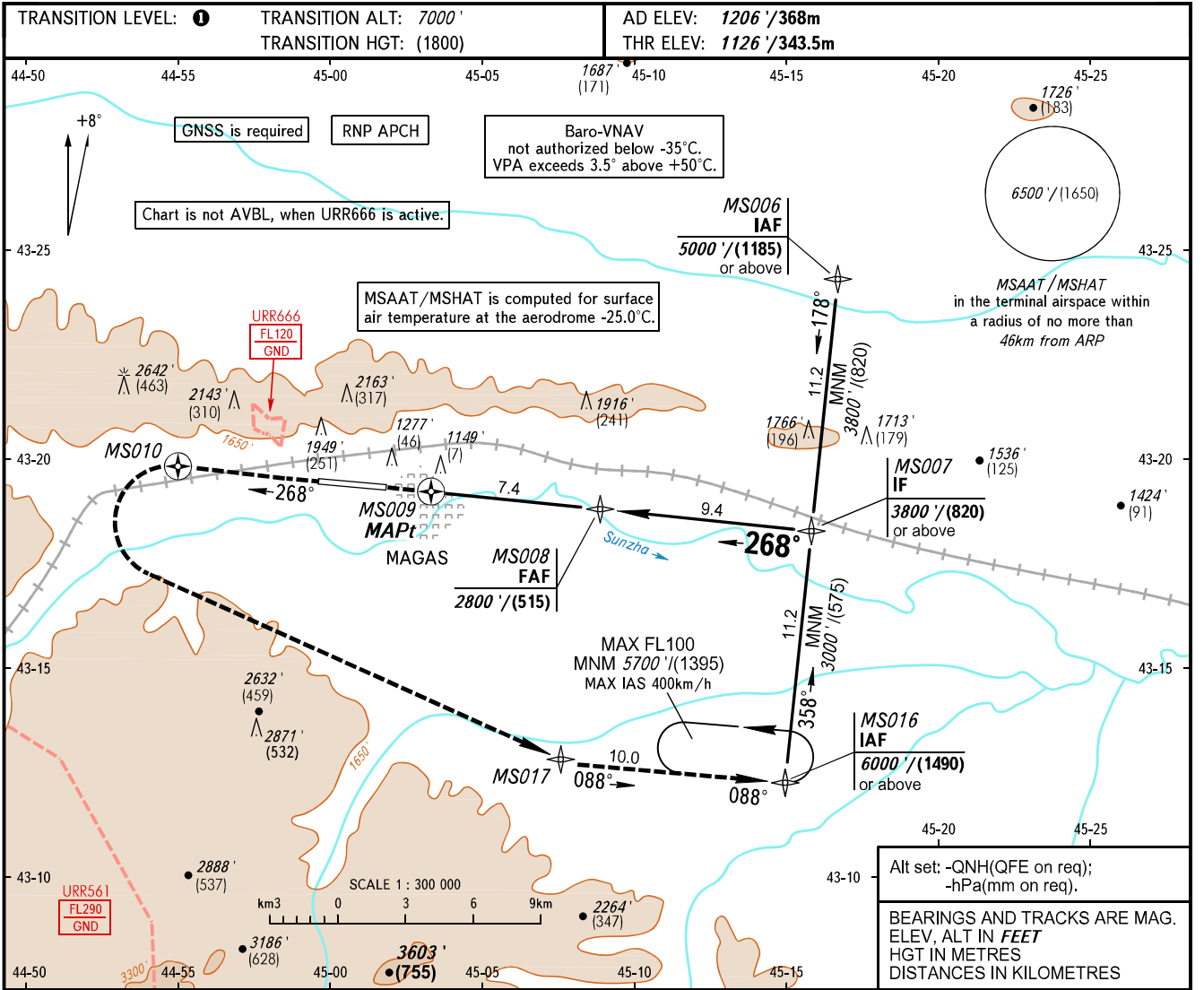


**INSTRUMENT  
APPROACH  
CHART - ICAO**

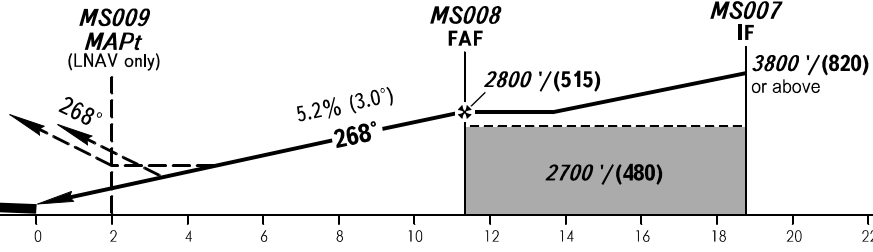
VYSHKA **119.150**

**MAGAS, RUSSIA**  
MAGAS  
RNP RWY 27



**MISSED APPROACH**  
Climb on track 268° to MS010, turn LEFT to MS017, then proceed to MS016 climbing to 6000' / (1490) or above.

DIST to RW27	4.0	6.0	8.0
ALTITUDE/HEIGHT	1860' / (225)	2210' / (335)	2550' / (435)



OCA(H)		A	B	C	D									
Straight-in Approach	LNAV / VNAV	2.9%*	1720' (600') (185)	1720' (600') (185)	1720' (600') (185)	1740' (610') (190)								
	LNAV / VNAV	2.5%*	1810' (690') (210)	1830' (710') (215)	1850' (730') (225)	1870' (750') (230)								
	LNAV	3.7%*	1770' (650') (200)	1770' (650') (200)	1770' (650') (200)	1770' (650') (200)								
	LNAV	2.5%*	1830' (710') (215)	1860' (740') (225)	1880' (760') (230)	1900' (780') (240)								
Circling			2550' (1340') (410)	2760' (1550') (475)	3000' (1800') (550)	3430' (2230') (680)								
GROUND SPEED		km/h	150	180	210	240	270	300	330	360	390			
RATE OF DESCENT		m/s	2.2	2.6	3.0	3.5	3.9	4.3	4.8	5.2	5.6			
		ft/min	427	512	597	682	768	853	938	1024	1109			

\* - Climb gradient for missed approach.  
**WARNING**  
MAPt at MS009. Timing not authorized for defining MAPt.

**1** TRANSITION LEVEL:  
- FL080 when QNH is 1013 hPa (760mm mercury column) or above;  
- FL090 when QNH is 977 hPa (733mm mercury column) or above, but less than 1013 hPa (760mm mercury column);  
- FL100 when QNH is less than 977 hPa (733mm mercury column).

CHANGE: New chart