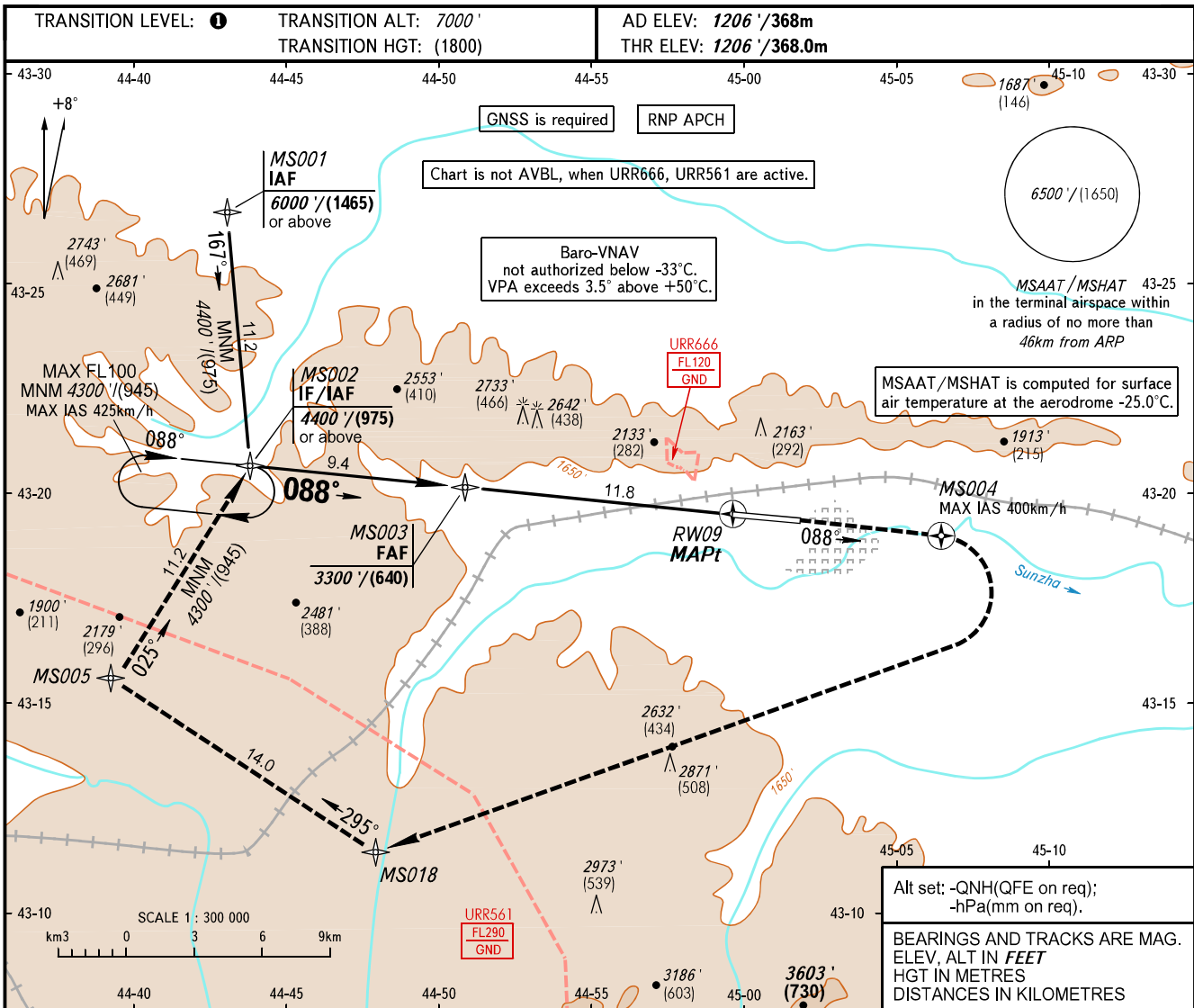


**INSTRUMENT
APPROACH
CHART - ICAO**

VYSHKA **119.150**

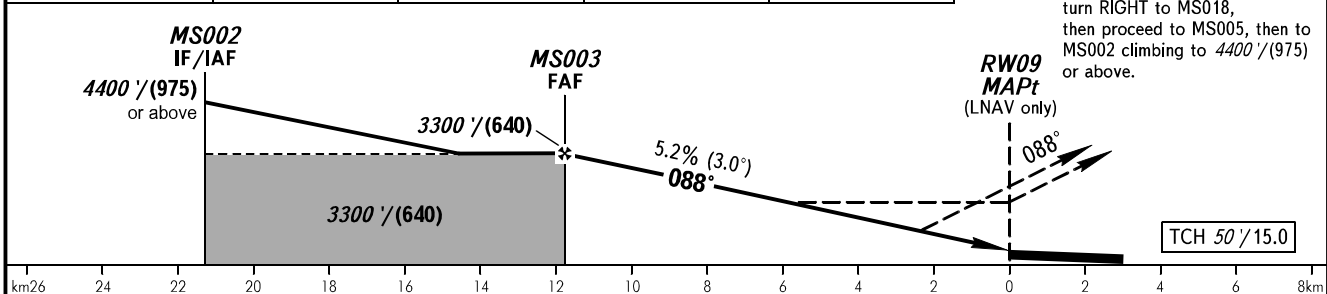
MAGAS, RUSSIA
MAGAS
RNP RWY 09



DIST to RW09	10.0	8.0	6.0	4.0
ALTITUDE/HEIGHT	2960'/(535)	2620'/(435)	2280'/(330)	1940'/(225)

Alt set: -QNH(QFE on req);
-hPa(mm on req).

BEARINGS AND TRACKS ARE MAG.
ELEV, ALT IN FEET
HGT IN METRES
DISTANCES IN KILOMETRES



OCA(H)		A	B	C	D
Straight-in Approach	LNAV/VNAV	1690' (490') (150)	1690' (490') (150)	1690' (490') (150)	1690' (490') (150)
	LNAV	2330' (1130') (345)	2330' (1130') (345)	2330' (1130') (345)	2330' (1130') (345)
Circling		2550' (1340') (410)	2760' (1550') (475)	3000' (1800') (550)	3430' (2230') (680)

WARNING:
MAPt at RW09. Timing not authorized for defining MAPt.

TRANSITION LEVEL:

- FL080 when QNH is 1013 hPa (760mm mercury column) or above;
- FL090 when QNH is 977 hPa (733mm mercury column) or above, but less than 1013 hPa (760mm mercury column);
- FL100 when QNH is less than 977 hPa (733mm mercury column).

GROUND SPEED	km/h	150	180	210	240	270	300	330	360	390
RATE OF DESCENT	m/s	2.2	2.6	3.0	3.5	3.9	4.3	4.8	5.2	5.6
	ft/min	427	512	597	682	768	853	938	1024	1109

CHANGE: New chart