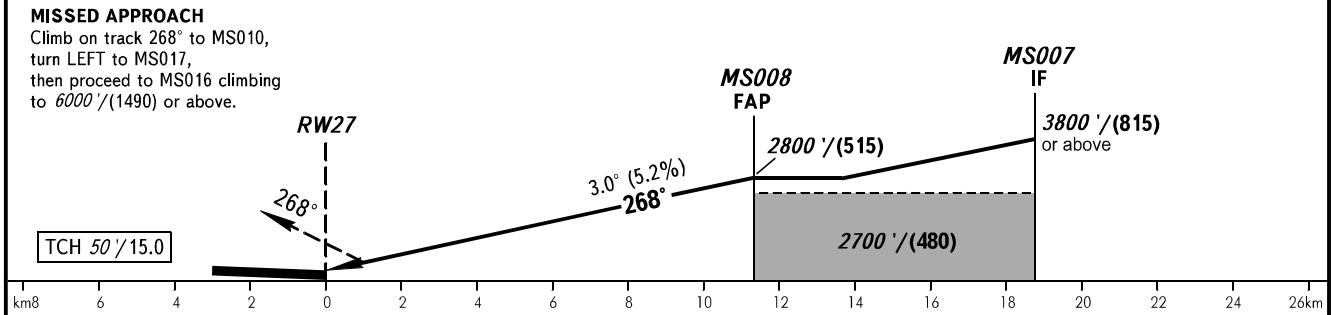
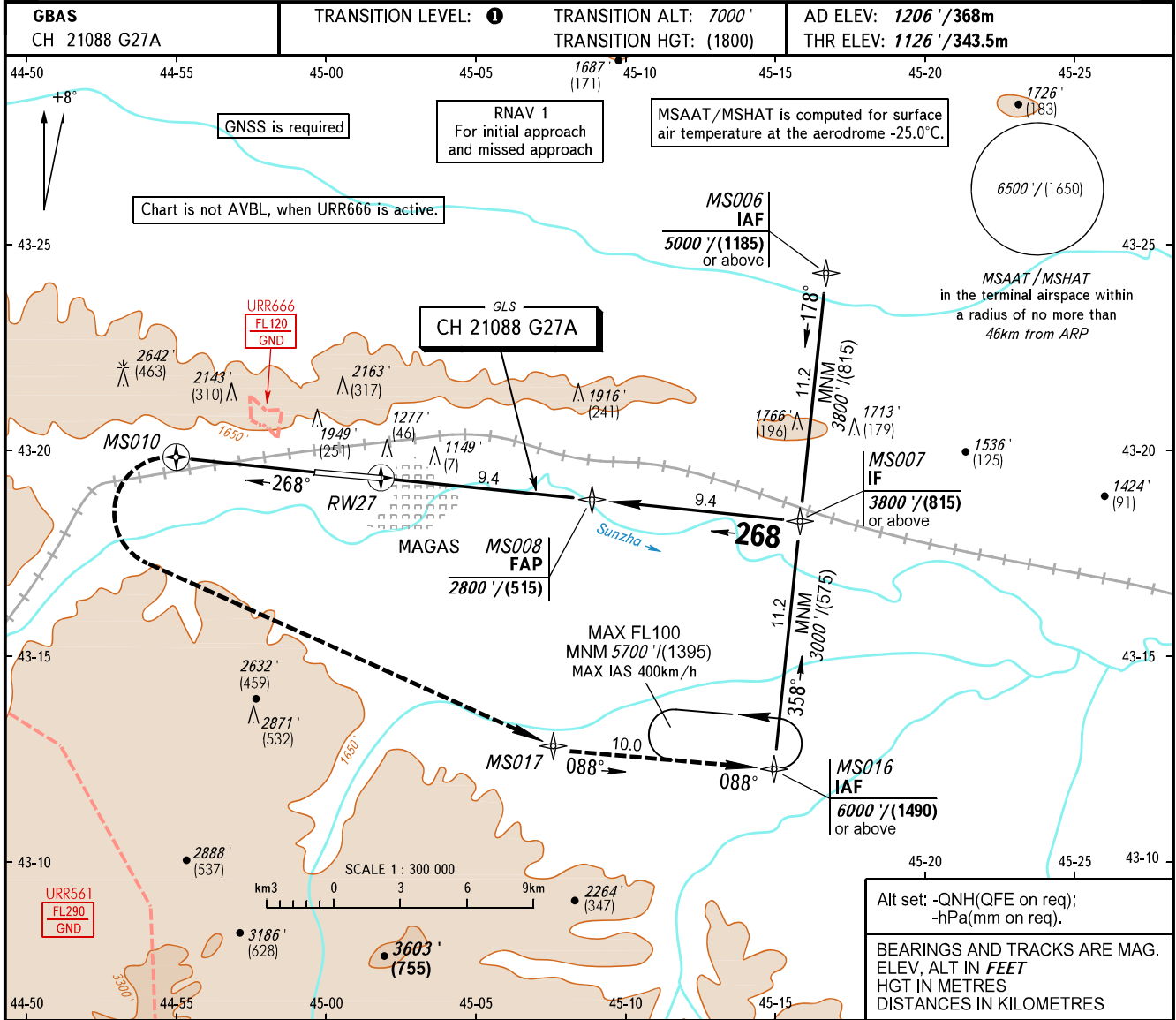


**INSTRUMENT
APPROACH
CHART - ICAO**

VYSHKA 119.150

MAGAS, RUSSIA
MAGAS
GLS RWY 27



OCA(H)		A	B	C	D						
Straight-in	4.0%*	1306' (180') (55)	1316' (190') (60)	1326' (200') (65)	1336' (209') (65)	* - Climb gradient for missed approach. 1 TRANSITION LEVEL: - FL080 when QNH is 1013 hPa (760mm mercury column) or above; - FL090 when QNH is 977 hPa (733mm mercury column) or above, but less than 1013 hPa (760mm mercury column); - FL100 when QNH is less than 977 hPa (733mm mercury column).					
	2.5%*	1697' (571') (175)	1707' (580') (180)	1717' (590') (185)	1726' (600') (185)						
Approach											
Circling		2550' (1340') (410)	2760' (1550') (475)	3000' (1800') (550)	3430' (2230') (680)						
GROUND SPEED		km/h	150	180	210	240	270	300	330	360	390
RATE OF DESCENT		m/s	2.2	2.6	3.0	3.5	3.9	4.3	4.8	5.2	5.6
		ft/min	427	512	597	682	768	853	938	1024	1109