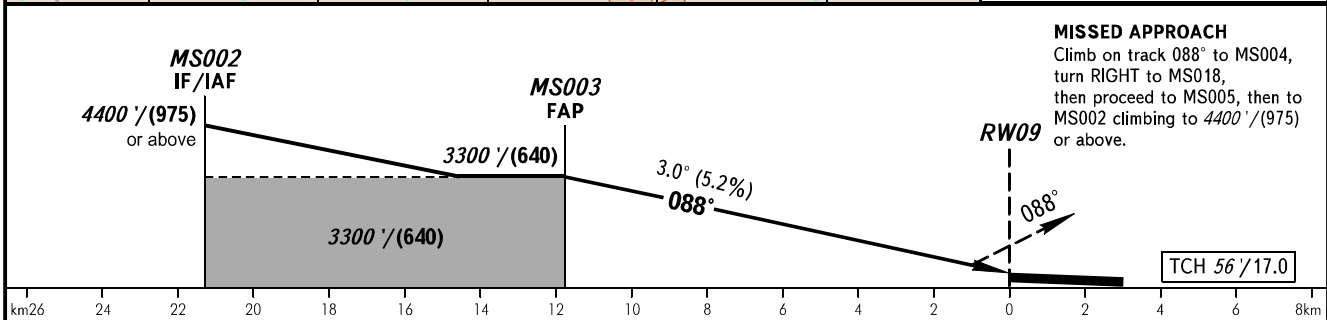
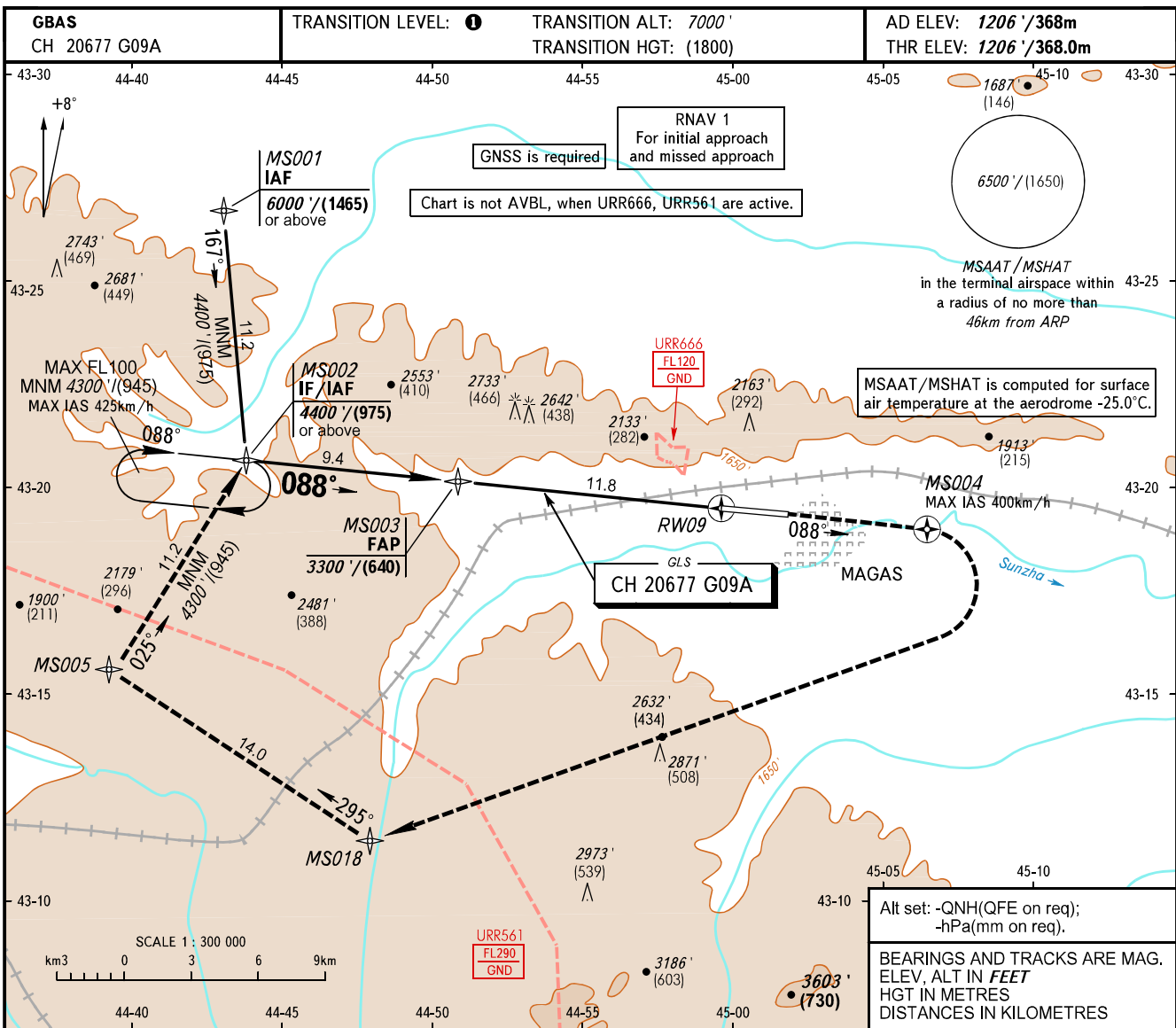


**INSTRUMENT
APPROACH
CHART - ICAO**

VYSHKA **119.150**

MAGAS, RUSSIA
MAGAS
GLS RWY 09



OCA(H)		A	B	C	D	* - Climb gradient for missed approach.								
Straight-in Approach	CAT I	3.0%*	1393' (187') (60)	1403' (197') (60)	1413' (207') (65)	1423' (217') (70)	① TRANSITION LEVEL: - FL080 when QNH is 1013 hPa (760mm mercury column) or above; - FL090 when QNH is 977 hPa (733mm mercury column) or above, but less than 1013 hPa (760mm mercury column); - FL100 when QNH is less than 977 hPa (733mm mercury column).							
	CAT I	2.5%*	1642' (436') (135)	1652' (446') (140)	1661' (455') (140)	1671' (465') (145)								
Circling			2550' (1340') (410)	2760' (1550') (475)	3000' (1800') (550)	3430' (2230') (680)								
GROUND SPEED		km/h	150	180	210	240	270	300	330	360	390			
RATE OF DESCENT		m/s	2.2	2.6	3.0	3.5	3.9	4.3	4.8	5.2	5.6			
		ft/min	427	512	597	682	768	853	938	1024	1109			

CHANGE: New chart