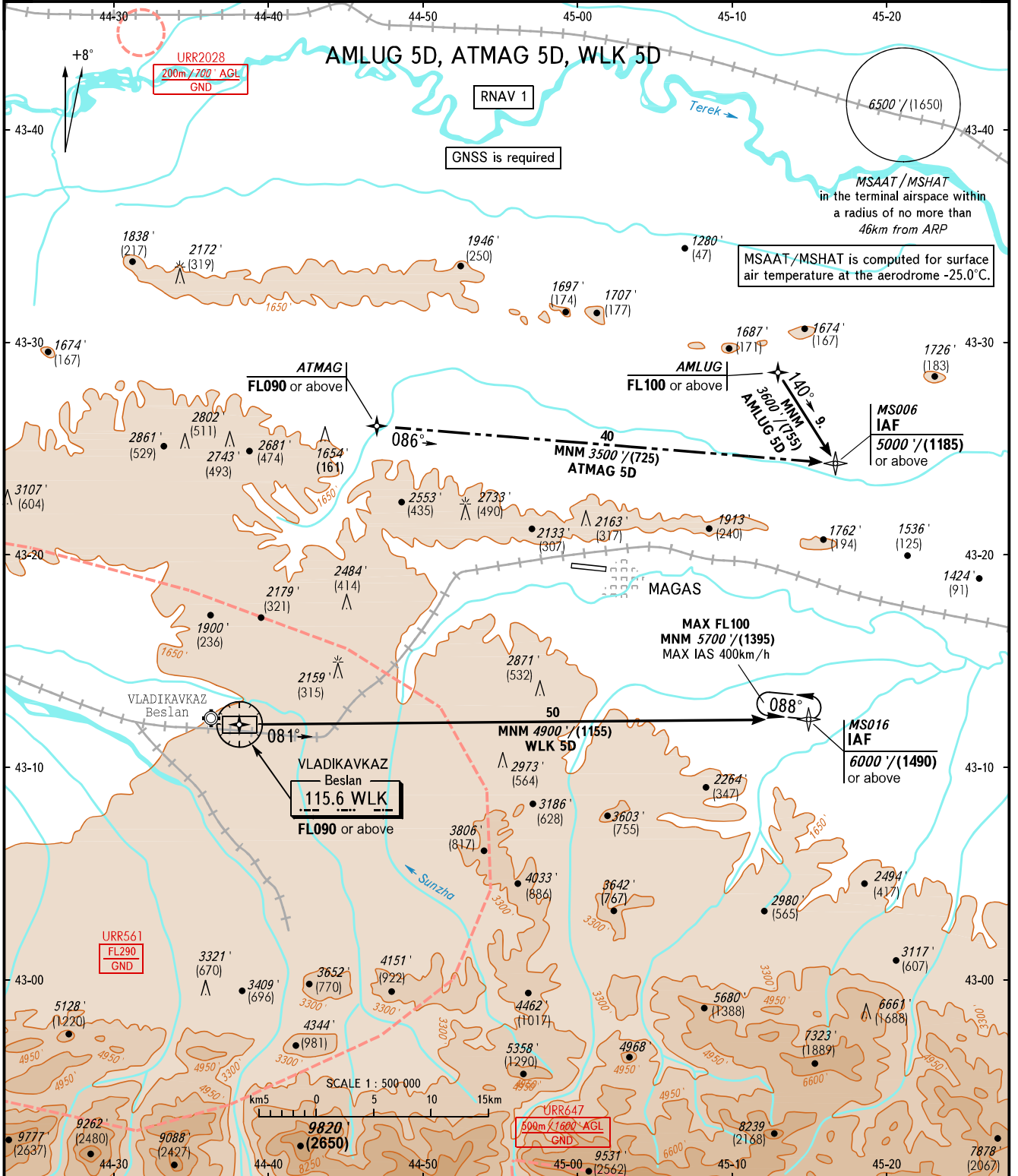


STANDART ARRIVAL CHART
INSTRUMENT (STAR) - ICAO

MAGAS, RUSSIA
MAGAS
RNAV RWY 27

TRANSITION LEVEL: **1**



VYSHKA	119.150
BEARINGS AND TRACKS ARE MAGNETIC ELEVATIONS AND ALTITUDES IN FEET HEIGHTS IN METRES DISTANCES IN KILOMETRES	Alt set: -QNH(QFE on req); -hPa(mm on req).

1 TRANSITION LEVEL:
 - FL080 when QNH is 1013 hPa (760mm mercury column) or above;
 - FL090 when QNH is 977 hPa (733mm mercury column) or above, but less than 1013 hPa (760mm mercury column);
 - FL100 when QNH is less than 977 hPa (733mm mercury column).

WARNING
 WLK 5D is not AVBL, when URR561 is active.

CHANGE: New chart