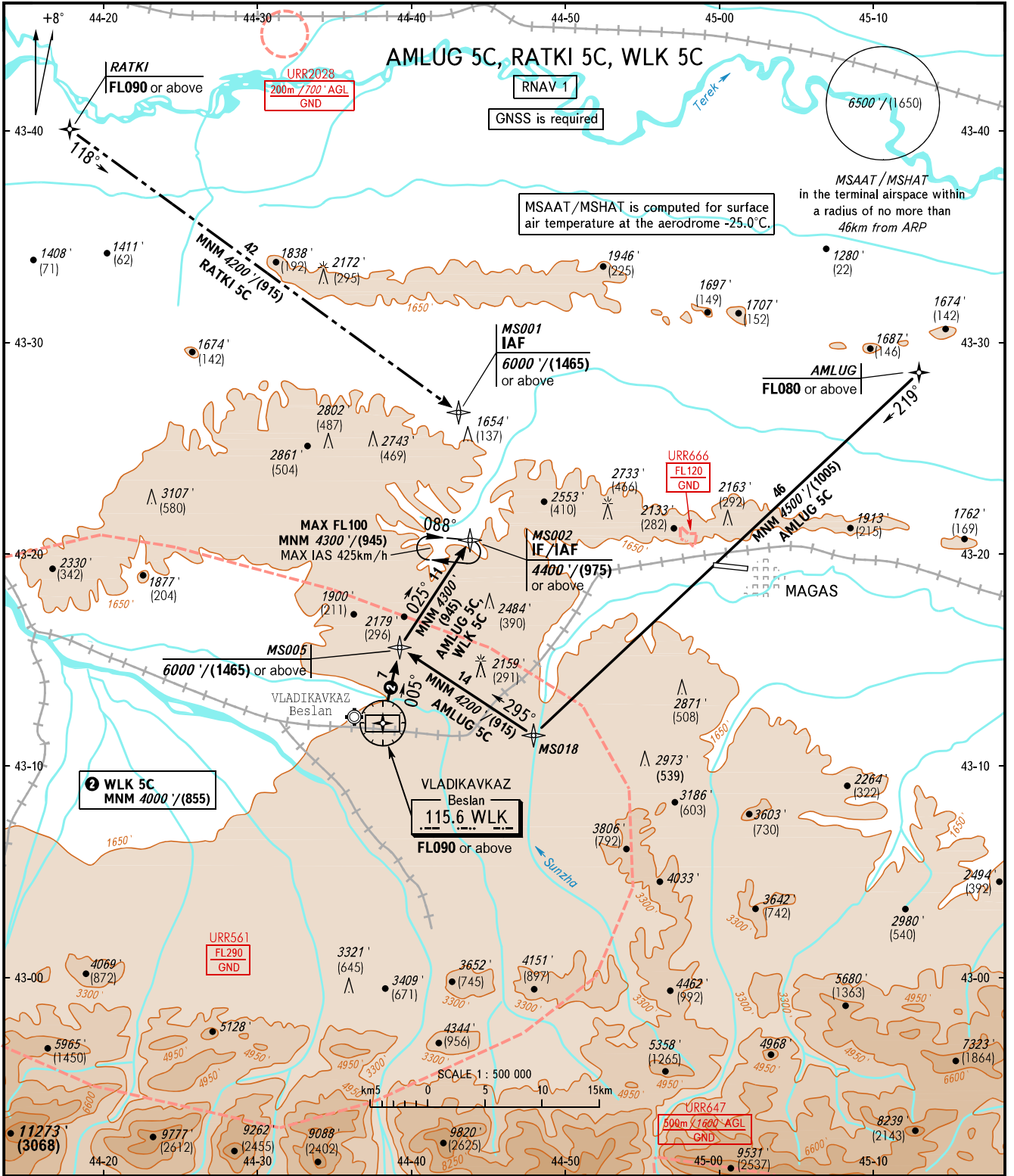


STANDART ARRIVAL CHART  
INSTRUMENT (STAR) - ICAO

MAGAS, RUSSIA  
MAGAS  
RNAV RWY 09

TRANSITION LEVEL: **1**



VYSHKA 119.150

**1** TRANSITION LEVEL:  
 - FL080 when QNH is 1013 hPa (760mm mercury column) or above;  
 - FL090 when QNH is 977 hPa (733mm mercury column) or above, but less than 1013 hPa (760mm mercury column);  
 - FL100 when QNH is less than 977 hPa (733mm mercury column).

**WARNING:**  
 1. AMLUG 5C is not AVBL, when URR666 is active.  
 2. WLK 5C is not AVBL, when URR561 is active.

BEARINGS AND TRACKS ARE MAGNETIC ELEVATIONS AND ALTITUDES IN FEET HEIGHTS IN METRES DISTANCES IN KILOMETRES	Alt set: -QNH(QFE on req); -hPa(mm on req).
-------------------------------------------------------------------------------------------------------------------	------------------------------------------------

CHANGE: New chart