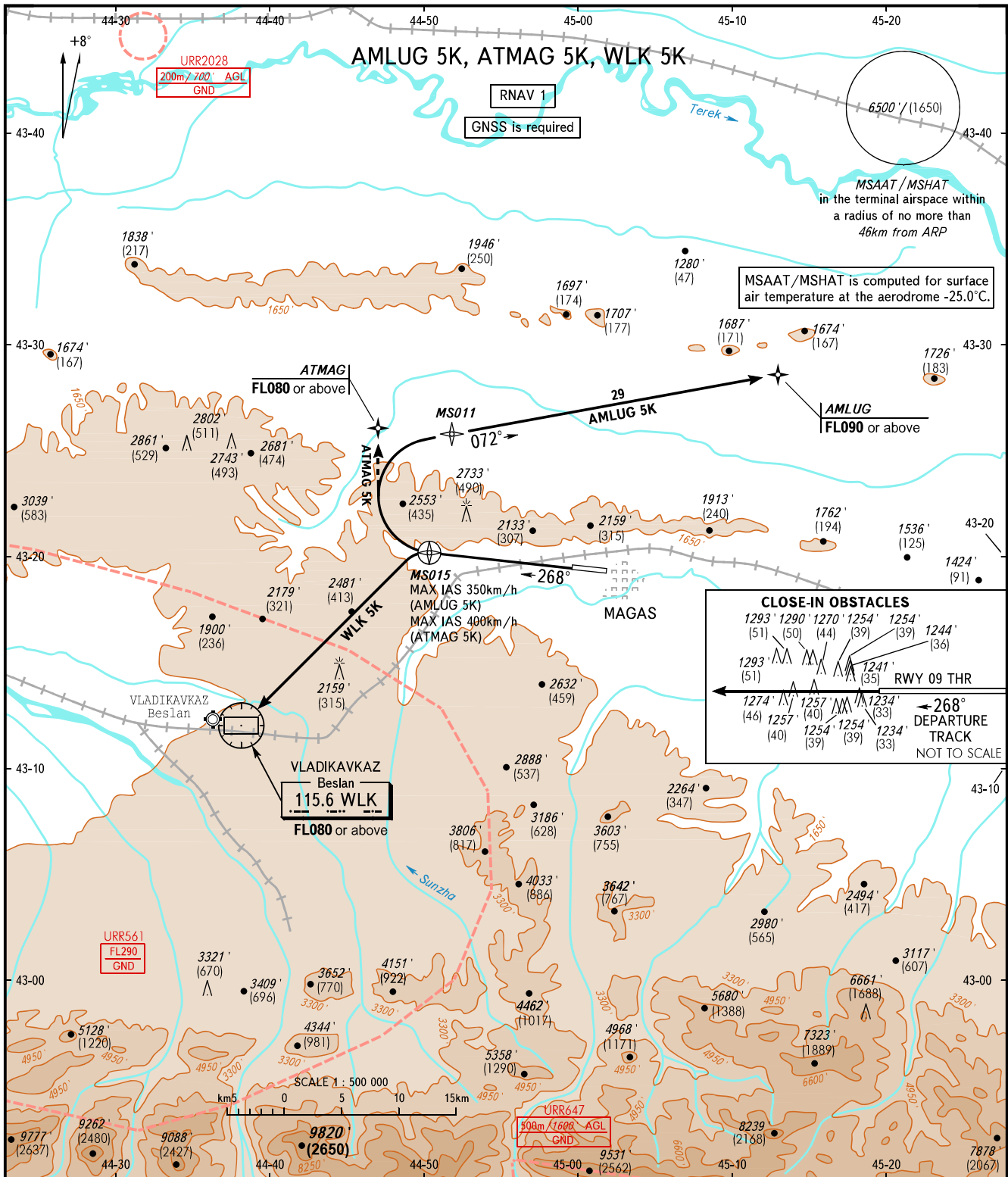


STANDART DEPARTURE CHART
INSTRUMENT (SID) - ICAO

TRANSITION ALT: **7000'**
TRANSITION HGT: **(1800)**

MAGAS, RUSSIA
MAGAS
RNAV RWY 27



CLOSE-IN OBSTACLES

1293' (51)	1290' (50)	1270' (44)	1254' (39)	1254' (39)	1244' (36)
1293' (51)	1257' (40)	1254' (39)	1234' (33)	1234' (33)	1234' (33)

← 268° DEPARTURE TRACK NOT TO SCALE

VYSHKA **119.150**

The minimum climb gradients required due to the airspace structure:
 - 4.1% up to FL090 for AMLUG 5K;
 - 8.0% up to FL080 for ATMAG 5K;
 - 5.8% up to FL080 for WLK 5K.
 required due to obstacles:
 - 5.0% up to 3100'/(605) for AMLUG 5K, ATMAG 5K;
 - 5.0% up to 2800'/(515) for WLK 5K.

WARNING
WLK 5K is not AVBL, when URR561 is active.

BEARINGS AND TRACKS ARE MAGNETIC
ELEVATIONS AND ALTITUDES IN **FEET**
HEIGHTS IN METRES
DISTANCES IN KILOMETRES

Alt set: -QNH(QFE on req);
-hPa(mm on req).