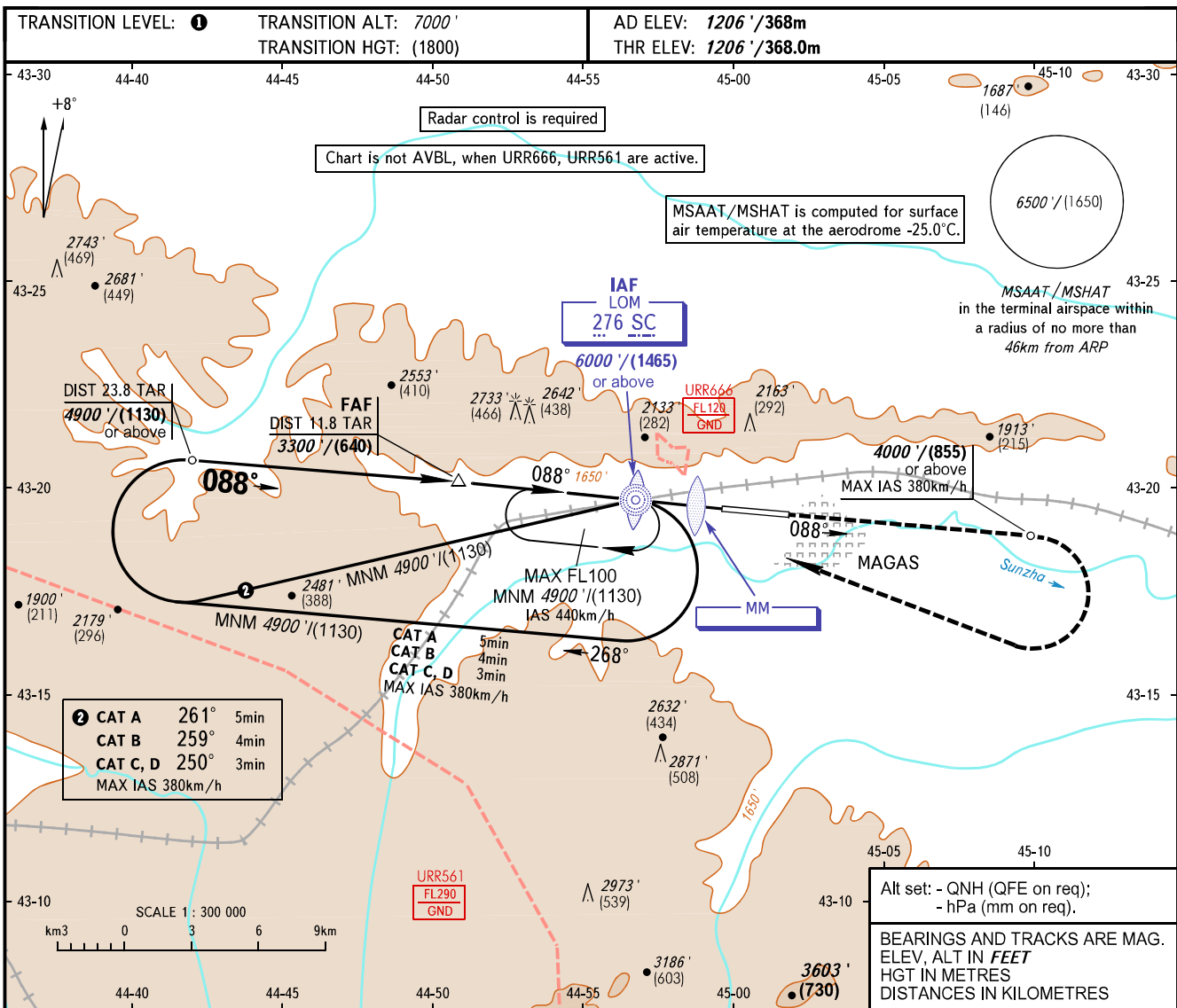


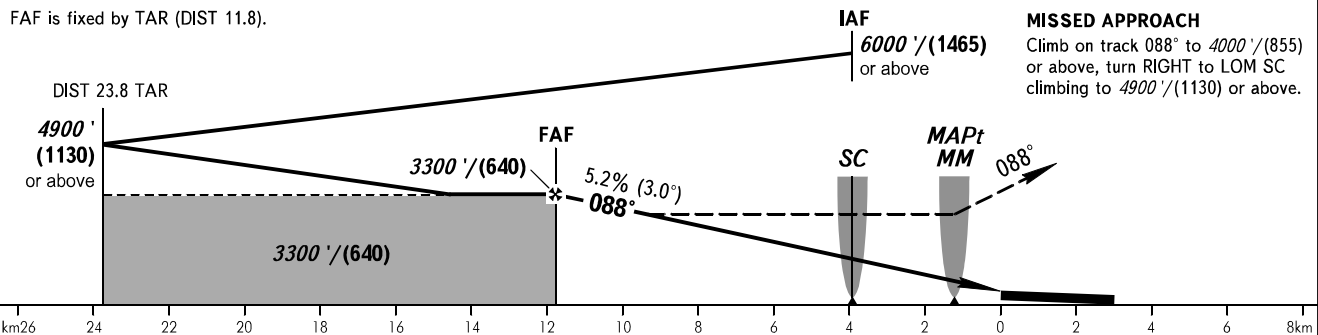
**INSTRUMENT
APPROACH
CHART - ICAO**

VYSHKA **119.150**

MAGAS, RUSSIA
MAGAS
NDB Y RWY 09



FAF is fixed by TAR (DIST 11.8).



OCA(H)	A	B	C	D
Straight-in	2830' (1620') (495)	2830' (1620') (495)	2830' (1620') (495)	2830' (1620') (495)
Approach				
Circling	2830' (1620') (495)	2830' (1620') (495)	3000' (1800') (550)	3430' (2230') (680)

WARNING:

- TAR reads zero at RWY 09 THR.
- MAPt at MM. Timing not authorized for defining MAPt.
- Turn before MAPt is PROHIBITED.

① **TRANSITION LEVEL:**

- FL080 when QNH is 1013 hPa (760mm mercury column) or above;
- FL090 when QNH is 977 hPa (733mm mercury column) or above, but less than 1013 hPa (760mm mercury column);
- FL100 when QNH is less than 977 hPa (733mm mercury column).

GROUND SPEED	km/h	150	180	210	240	270	300	330	360	390
RATE OF DESCENT	m/s	2.2	2.6	3.0	3.5	3.9	4.3	4.8	5.2	5.6
	ft/min	427	512	597	682	768	853	938	1024	1109

CHANGE: New chart