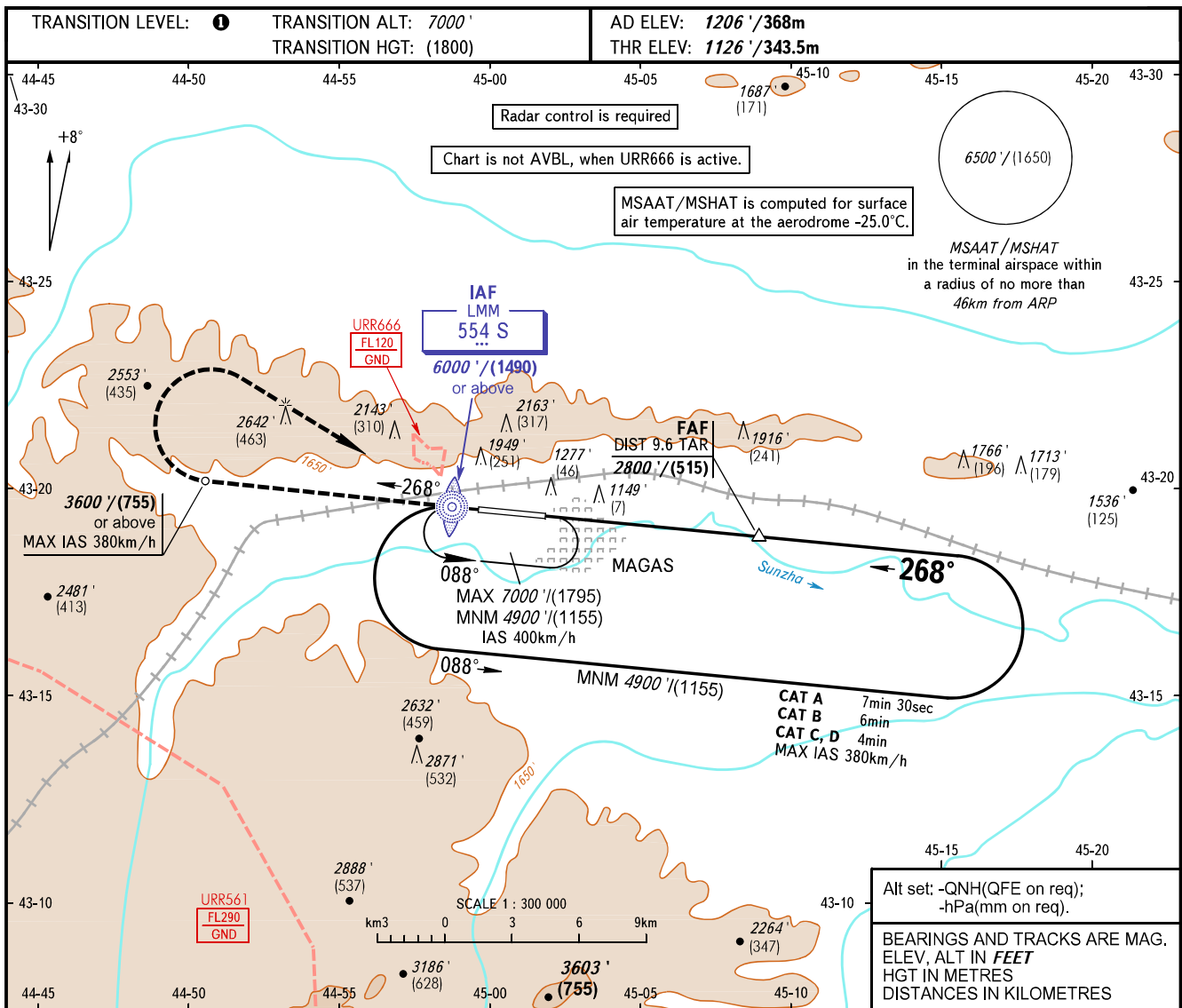


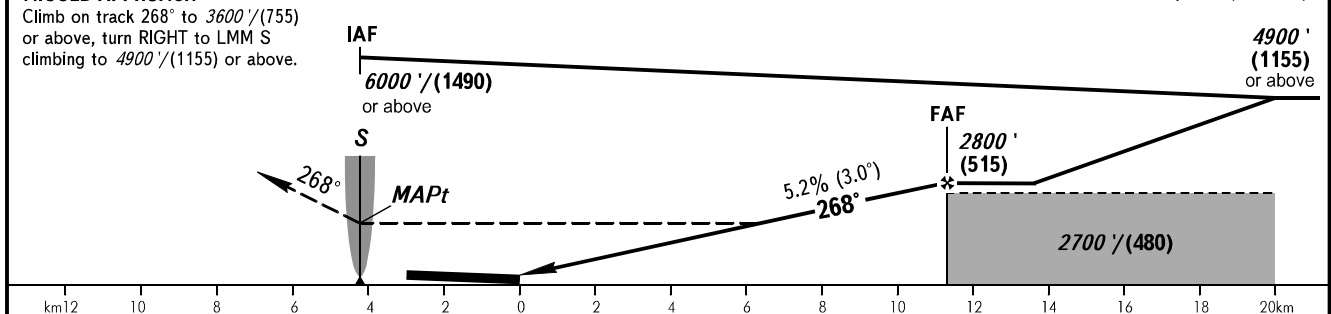
**INSTRUMENT  
APPROACH  
CHART - ICAO**

VYSHKA 119.150

**MAGAS, RUSSIA**  
MAGAS  
NDB RWY 27



**MISSED APPROACH** FAF is fixed by TAR (DIST 9.6).  
Climb on track 268° to 3600'/(755) or above, turn RIGHT to LMM S climbing to 4900'/(1155) or above.



OCA(H)		A	B	C	D						
Straight-in Approach	3.3%*	2230' (1110') (340)	2230' (1110') (340)	2230' (1110') (340)	2230' (1110') (340)						
	2.5%*	2400' (1280') (390)	2400' (1280') (390)	2400' (1280') (390)	2400' (1280') (390)						
Circling		2550' (1340') (410)	2760' (1550') (475)	3000' (1800') (550)	3430' (2230') (680)						
GROUND SPEED		km/h	150	180	210	240	270	300	330	360	390
RATE OF DESCENT		m/s	2.2	2.6	3.0	3.5	3.9	4.3	4.8	5.2	5.6
		ft/min	427	512	597	682	768	853	938	1024	1109

**WARNING:**  
1. TAR reads zero at RWY 27 THR.  
2. MAPt at LMM S. Timing not authorized for defining MAPt.  
3. \* - Climb gradient for missed approach.  
4. Turn before MAPt is PROHIBITED.

**TRANSITION LEVEL:**  
- FL080 when QNH is 1013 hPa (760mm mercury column) or above;  
- FL090 when QNH is 977 hPa (733mm mercury column) or above, but less than 1013 hPa (760mm mercury column);  
- FL100 when QNH is less than 977 hPa (733mm mercury column).