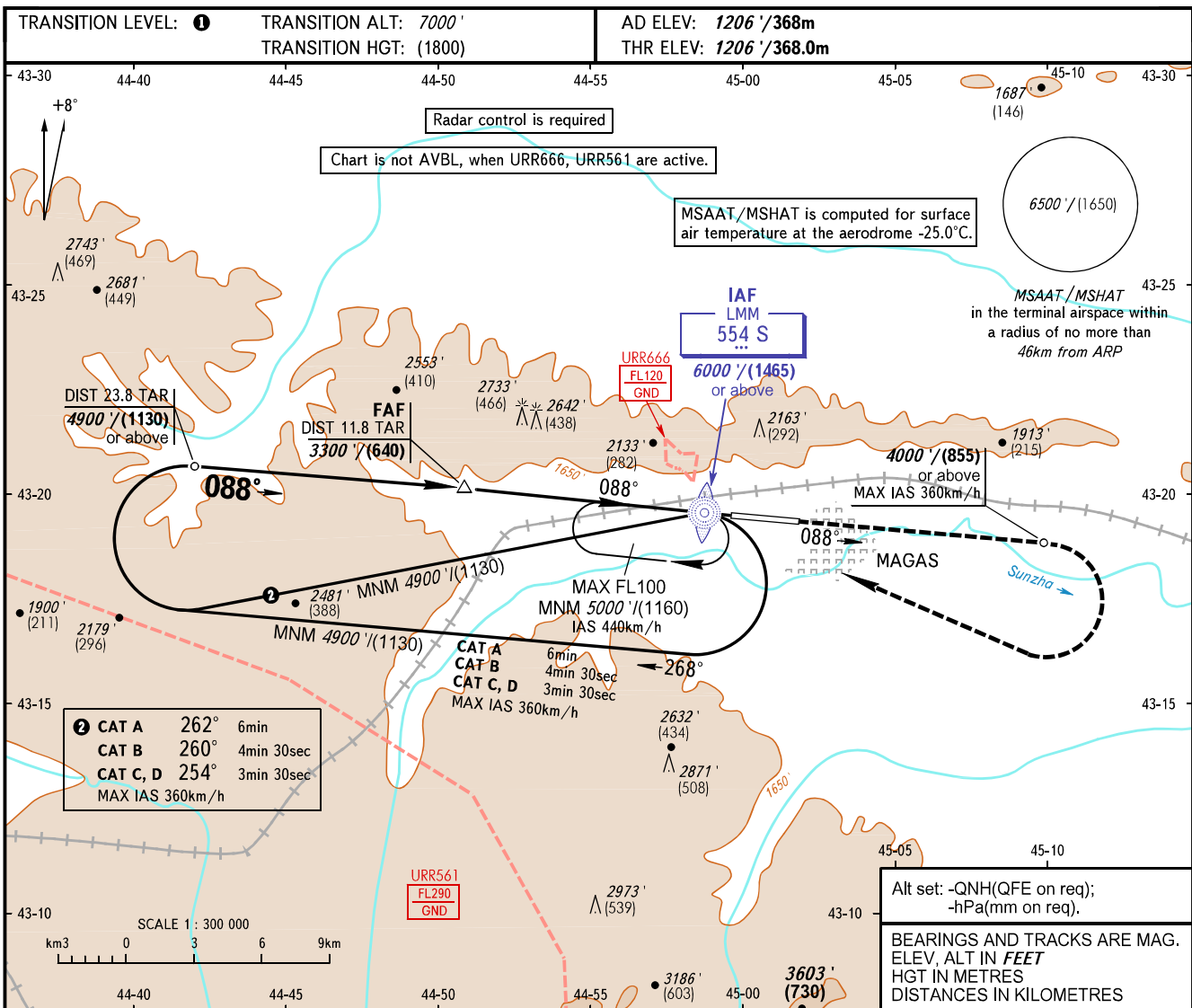


**INSTRUMENT  
APPROACH  
CHART - ICAO**

VYSHKA **119.150**

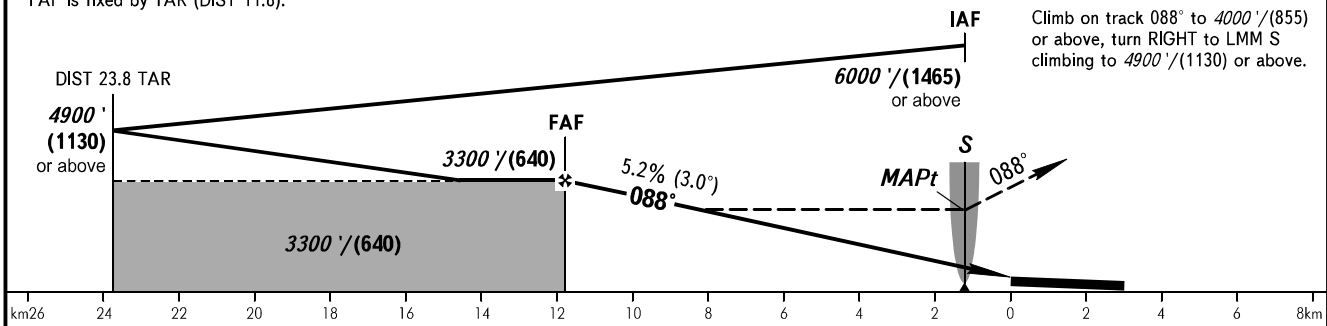
**MAGAS, RUSSIA**  
MAGAS  
NDB Z RWY 09



FAF is fixed by TAR (DIST 11.8).

**MISSED APPROACH**

Climb on track 088° to 4000' (855) or above, turn RIGHT to LMM S climbing to 4900' (1130) or above.



OCA(H)		A	B	C	D
Straight-in	Approach	2950' (1740') (535)	2950' (1740') (535)	2950' (1740') (535)	2950' (1740') (535)
	Circling	2950' (1740') (535)	2950' (1740') (535)	3000' (1800') (550)	3430' (2230') (680)

**WARNING:**  
 1. TAR reads zero at RWY 09 THR.  
 2. MAPt at LMM S. Timing not authorized for defining MAPt.  
 3. Turn before MAPt is PROHIBITED.  
**① TRANSITION LEVEL:**  
 - FL080 when QNH is 1013 hPa (760mm mercury column) or above;  
 - FL090 when QNH is 977 hPa (733mm mercury column) or above, but less than 1013 hPa (760mm mercury column);  
 - FL100 when QNH is less than 977 hPa (733mm mercury column).

GROUND SPEED	km/h	150	180	210	240	270	300	330	360	390
	RATE OF DESCENT	m/s	2.2	2.6	3.0	3.5	3.9	4.3	4.8	5.2
	ft/min	427	512	597	682	768	853	938	1024	1109

CHANGE: New chart