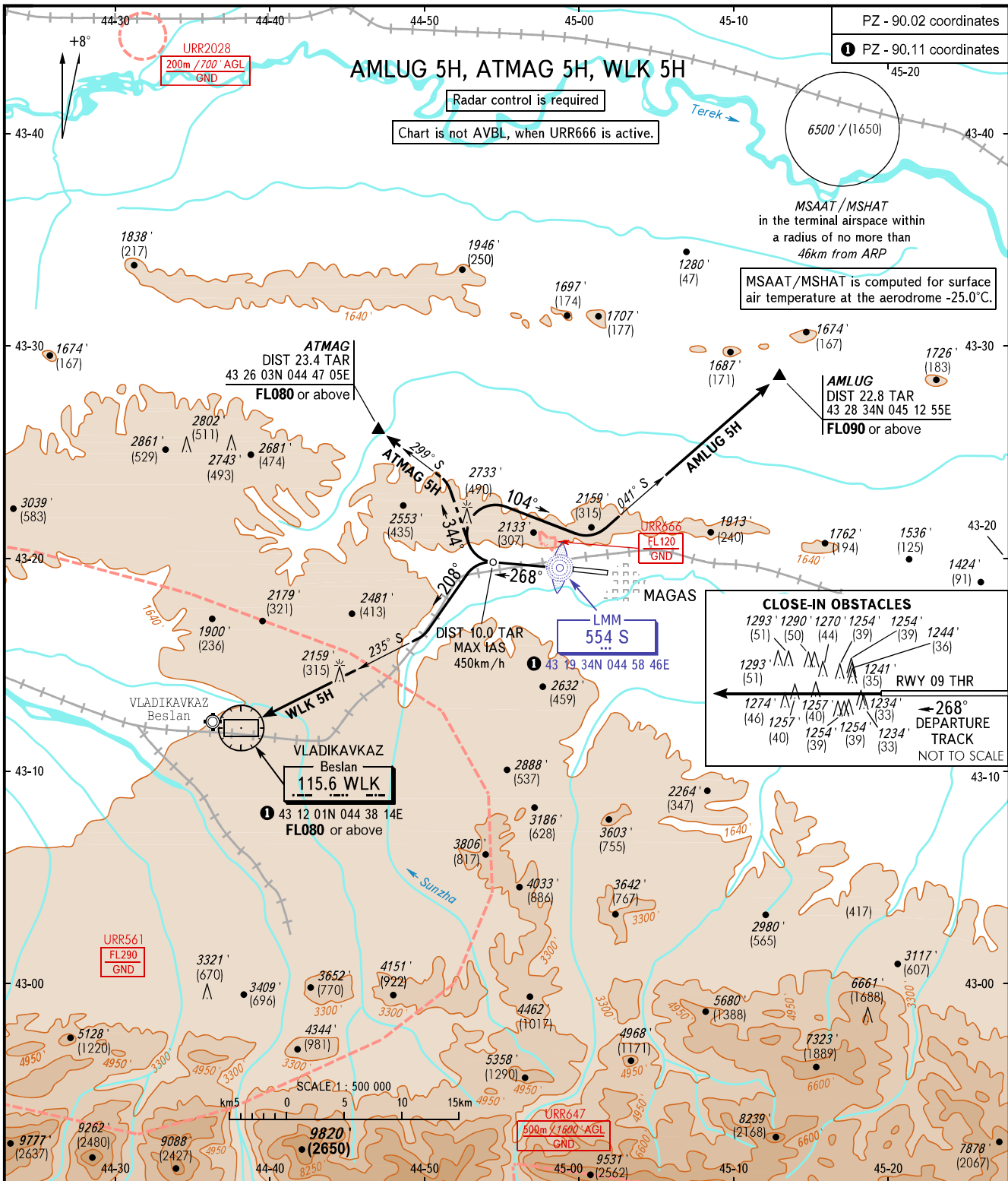


STANDART DEPARTURE CHART  
INSTRUMENT (SID) - ICAO

TRANSITION ALT: 7000'  
TRANSITION HGT: (1800)



**CLOSE-IN OBSTACLES**

1293'	1290'	1270'	1254'	1254'	1244'
(51)	(50)	(44)	(39)	(39)	(36)
1293'	1257'	1254'	1254'	1234'	1241'
(51)	(40)	(39)	(39)	(33)	(35)
1274'	1257'	1254'	1234'	1234'	
(46)	(40)	(39)	(33)	(33)	

← 268° DEPARTURE TRACK  
RWY 09 THR  
NOT TO SCALE

<p>VYSHKA 119.150</p>	<p>The minimum climb gradients required due to the airspace structure:                  - 5.0% up to FL090 for AMLUG 5H;                  - 9.0% up to FL080 for ATMAG 5H;                  - 5.8% up to FL080 for WLK 5H.                  required due to obstacles:                  - 6.4% up to 3300'/(665) for AMLUG 5H, ATMAG 5H;                  - 5.1% up to 2900'/(545) for WLK 5H.</p>	<p><b>WARNING:</b>                  1. TAR reads zero at RWY 27 THR.                  2. WLK 5H is not AVBL, when URR561 is active.</p>
<p>BEARINGS AND TRACKS ARE MAGNETIC ELEVATIONS AND ALTITUDES IN FEET HEIGHTS IN METRES DISTANCES IN KILOMETRES</p>	<p>Alt set: -QNH(QFE on req); -hPa(mm on req).</p>	<p>CHANGE: Heading</p>