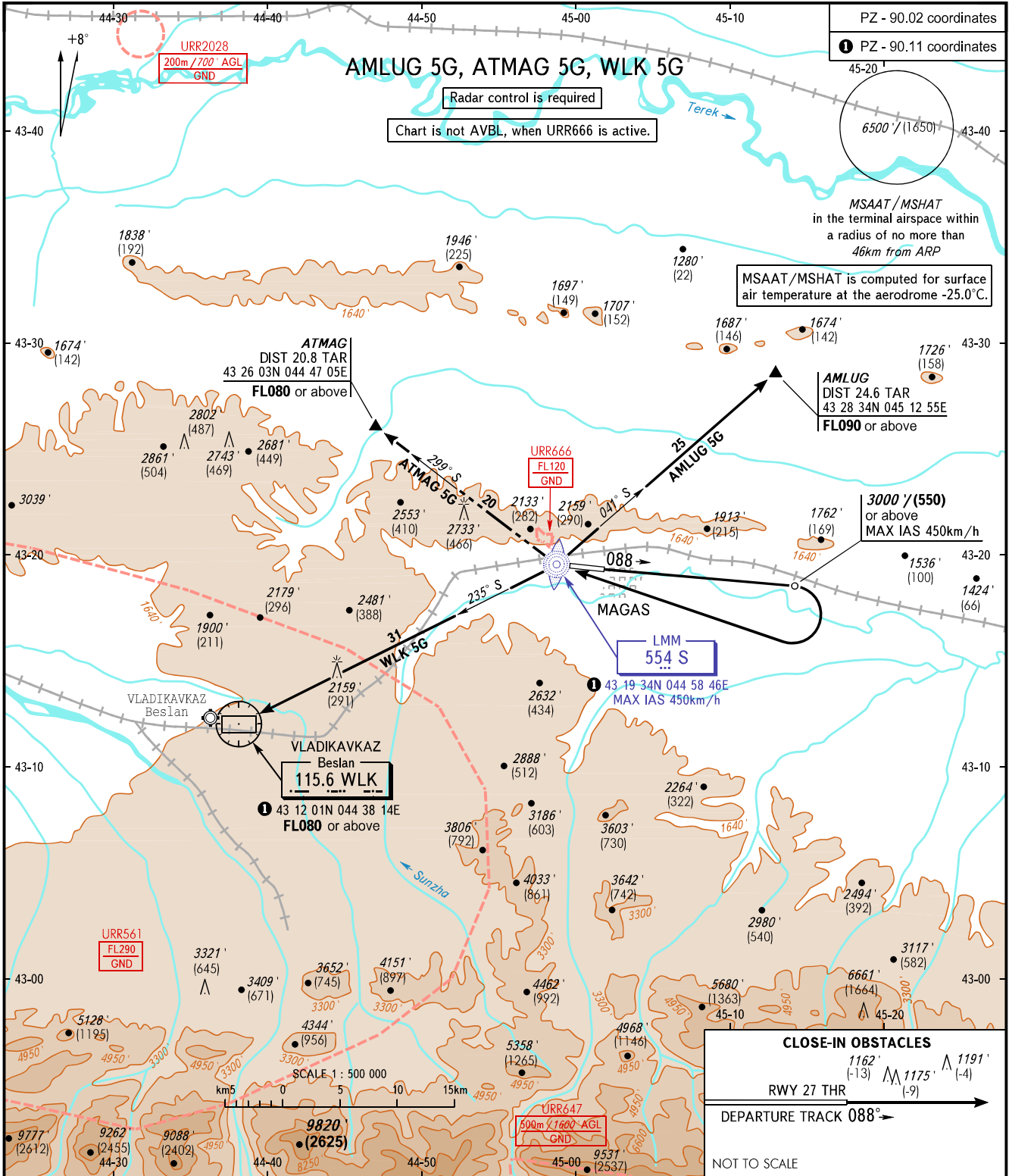


STANDART DEPARTURE CHART
INSTRUMENT (SID) - ICAO

TRANSITION ALT: **7000'**
TRANSITION HGT: **(1800)**

MAGAS, RUSSIA
MAGAS
RWY 09



PZ - 90.02 coordinates
① PZ - 90.11 coordinates

MSAAT / MSHAT
in the terminal airspace within
a radius of no more than
46km from ARP

MSAAT/MSHAT is computed for surface
air temperature at the aerodrome -25.0°C.

3000'/(550)
or above
MAX IAS 450km/h

LMM
554 S
① 43 19 34N 044 58 46E
MAX IAS 450km/h

VLADIKAVKAZ
Beslan
115.6 WLK
① 43 12 01N 044 38 14E
FL080 or above

CLOSE-IN OBSTACLES
1162' (-13) M 1175' (-9) A 1191' (-4)
RWY 27 THR
DEPARTURE TRACK 088°
NOT TO SCALE

VYSHKA 119.150

The minimum climb gradients required due to the airspace structure:
- 3.8% up to FL090 for AMLUG 5G;
- 3.7% up to FL080 for ATMAG 5G.

- WARNING:**
1. TAR reads zero at RWY 09 THR.
 2. WLK 5G is not AVBL, when URR561 is active.
 3. Turn before DER is PROHIBITED.

BEARINGS AND TRACKS ARE MAGNETIC
ELEVATIONS AND ALTITUDES IN FEET
HEIGHTS IN METRES
DISTANCES IN KILOMETRES

Alt set: -QNH(QFE on req);
-hPa(mm on req).

CHANGE: Warning, Heading