

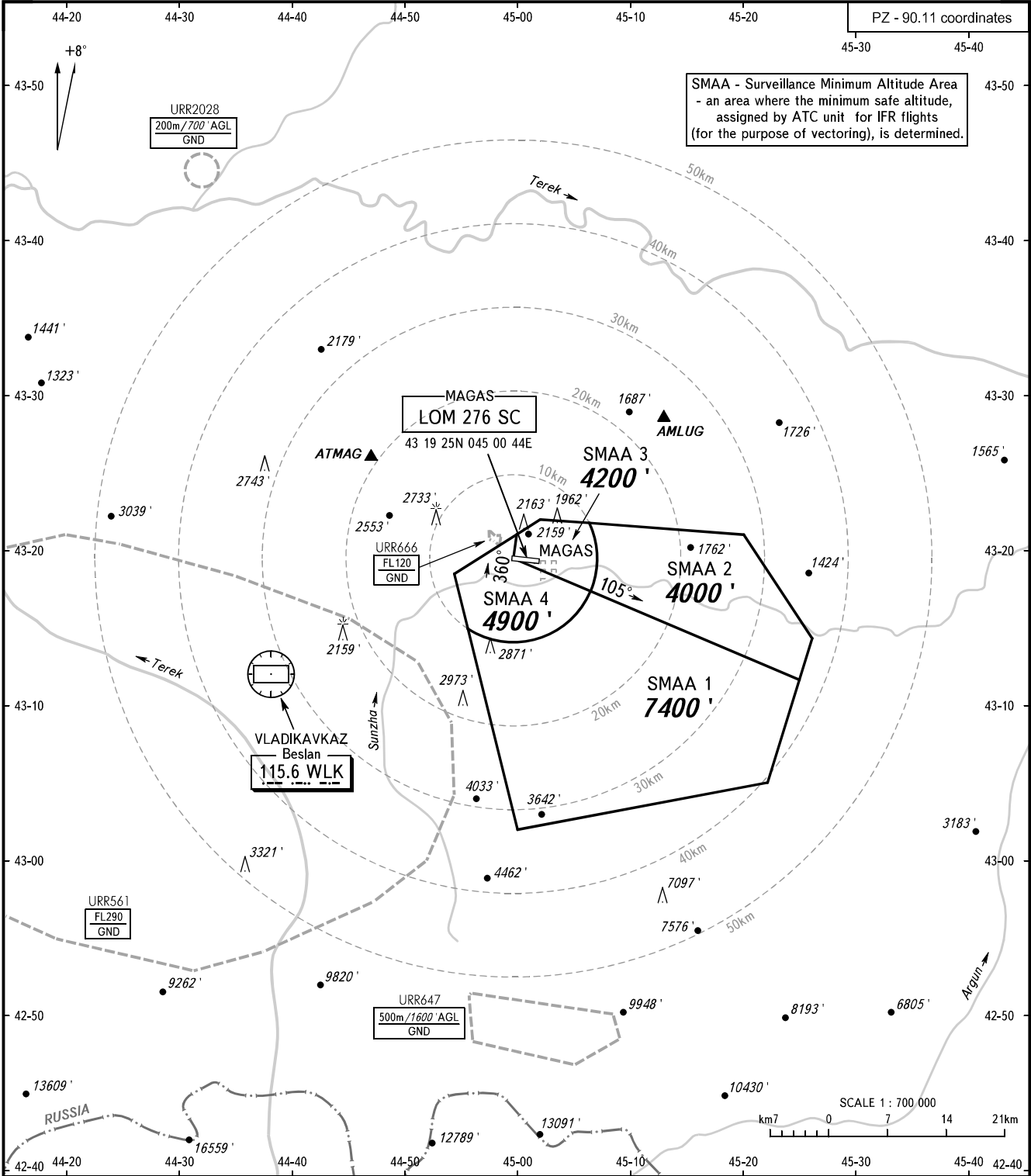
ATC SURVEILLANCE MINIMUM
ALTITUDE CHART - ICAO

ELEV
1206 / 368m

TRANSITION ALT: 7000'
TRANSITION HGT: (1800)

MAGAS, RUSSIA

MAGAS



SMAA - Surveillance Minimum Altitude Area - an area where the minimum safe altitude, assigned by ATC unit for IFR flights (for the purpose of vectoring), is determined.

VYSHKA 119.150

- NOTE:**
1. The chart may only be used for cross-checking of altitudes assigned while the aircraft is under radar control.
 2. When vectoring is carried out under low-temperature conditions, minimum vectoring altitudes for IFR flight must be corrected by altimeter temperature correction.
 3. COMMUNICATION FAILURE: In accordance with the procedures described in AIP.
 4. TAR reads zero at RWY 09 THR.

BEARINGS AND TRACKS ARE MAGNETIC ELEVATIONS AND ALTITUDES IN FEET HEIGHTS IN METRES DISTANCES IN KILOMETRES

Alt set: -QNH(QFE on req); -hPa(mm on req).

CHANGE: New chart

MAGAS, RUSSIA
MAGAS

SURVEILLANCE MINIMUM ALTITUDE AREAS		
IDENT	MNM ALT (ft)	LATERAL LIMITS (PZ-90.11 coordinates)
SMAA 1	7400	431137.20N 0452450.70E – 430500.00N 0452200.00E, then along the border of Magas CTR to 431457.50N 0445536.40E, then anticlockwise by arc of a circle radius of 10 km centred at 431929.60N 0445937.60E to 431722.80N 0450626.10E – 431137.20N 0452450.70E.
SMAA 2	4000	431137.20N 0452450.70E – 431722.80N 0450626.10E, then anticlockwise by arc of a circle radius of 10 km centred at 431929.60N 0445937.60E to 432147.20N 0450619.80E – 432100.00N 0452000.00E, then along the border of Magas CTR to 431137.20N 0452450.70E.
SMAA 3	4200	431929.60N 0445937.60E – 432102.70N 0445955.50E – 432200.00N 0450200.00E – 432147.20N 0450619.80E, then clockwise by arc of a circle radius of 10 km centred at 431929.60N 0445937.60E to 431722.80N 0450626.10E – 431929.60N 0445937.60E.
SMAA 4	4900	431929.60N 0445937.60E – 431722.80N 0450626.10E, then clockwise by arc of a circle radius of 10 km centred at 431929.60N 0445937.60E to 431457.50N 0445536.40E – 431830.00N 0445424.00E – 432102.70N 0445955.50E – 431929.60N 0445937.60E.