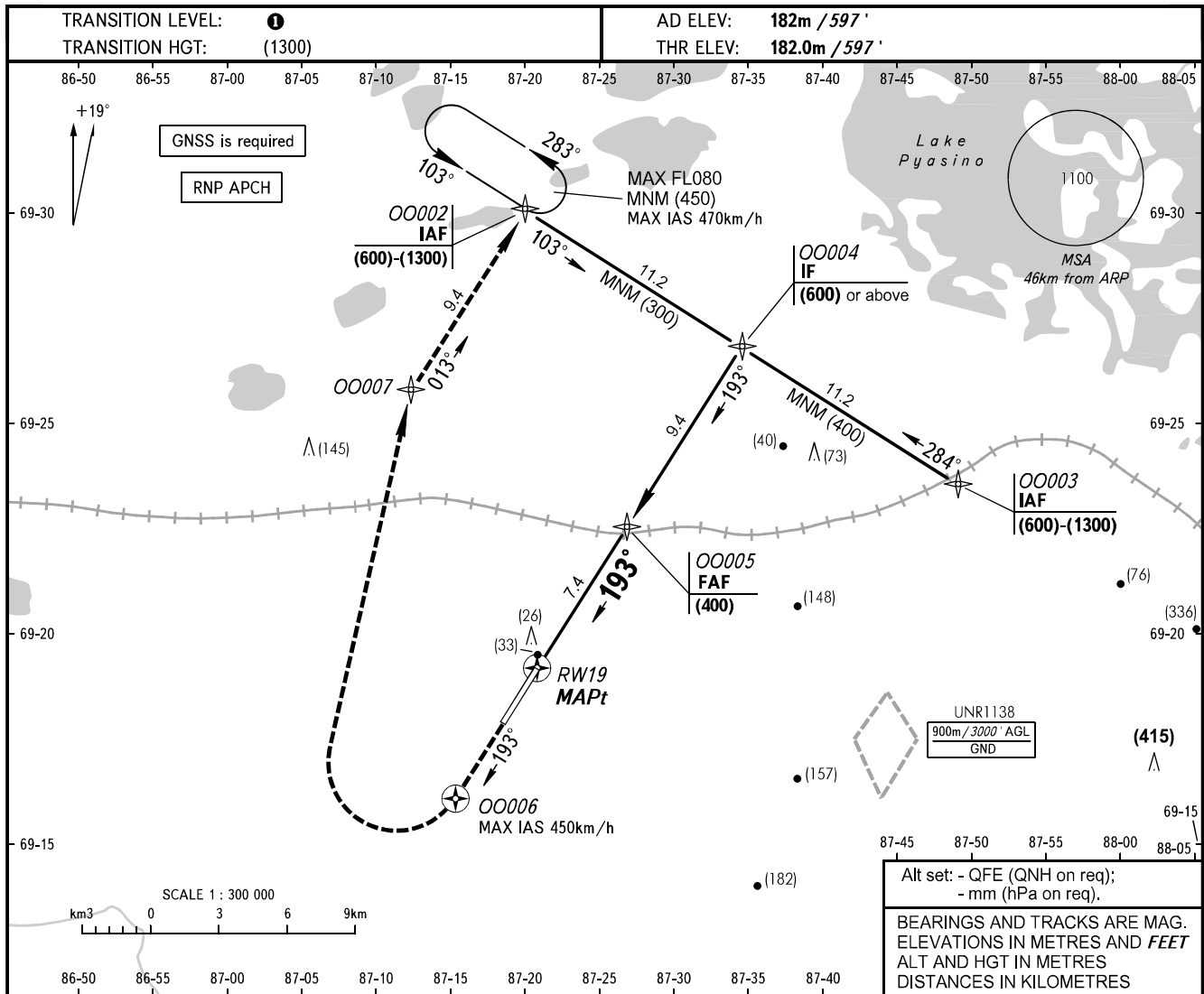


**INSTRUMENT  
APPROACH  
CHART - ICAO**

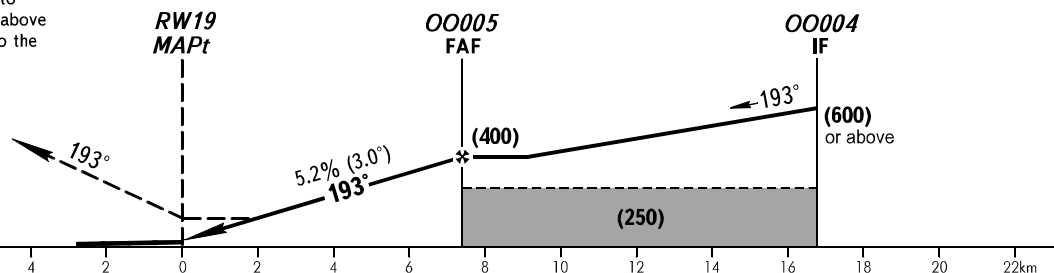
NORILSK RADAR	120.400
NORILSK PRECISION	118.300
NORILSK START	118.300

**NORILSK, RUSSIA**  
ALYKEL  
RNAV RWY 19



**MISSED APPROACH**  
Climb on track 193° to OO006  
turn RIGHT to OO007, then to  
OO002 climbing to (600) or above  
than according to chart or to the  
holding area.

DIST to RW19	2.0	4.0	6.0	7.4
HEIGHT	(120)	(225)	(330)	(400)



OCA(H)		A	B	C	D						
Straight-in Approach	LNAV	285(105)	285(105)	285(105)	285(105)						
Circling		305(120)	335(150)	365(180)	395(210)						
GROUND SPEED		km/h	150	180	210	240	270	300	330	360	390
RATE OF DESCENT		m/s	2.2	2.6	3.0	3.5	3.9	4.3	4.8	5.2	5.6

**1** TRANSITION LEVEL:  
- FLO60 when QFE is 744mm mercury column or above;  
- FLO70 when QFE is 717mm mercury column or above,  
but less than 744mm mercury column;  
- FLO80 when QFE is less than 717mm mercury column.

**WARNING**  
MAPt at RW19. Timing not authorized  
for defining MAPt.