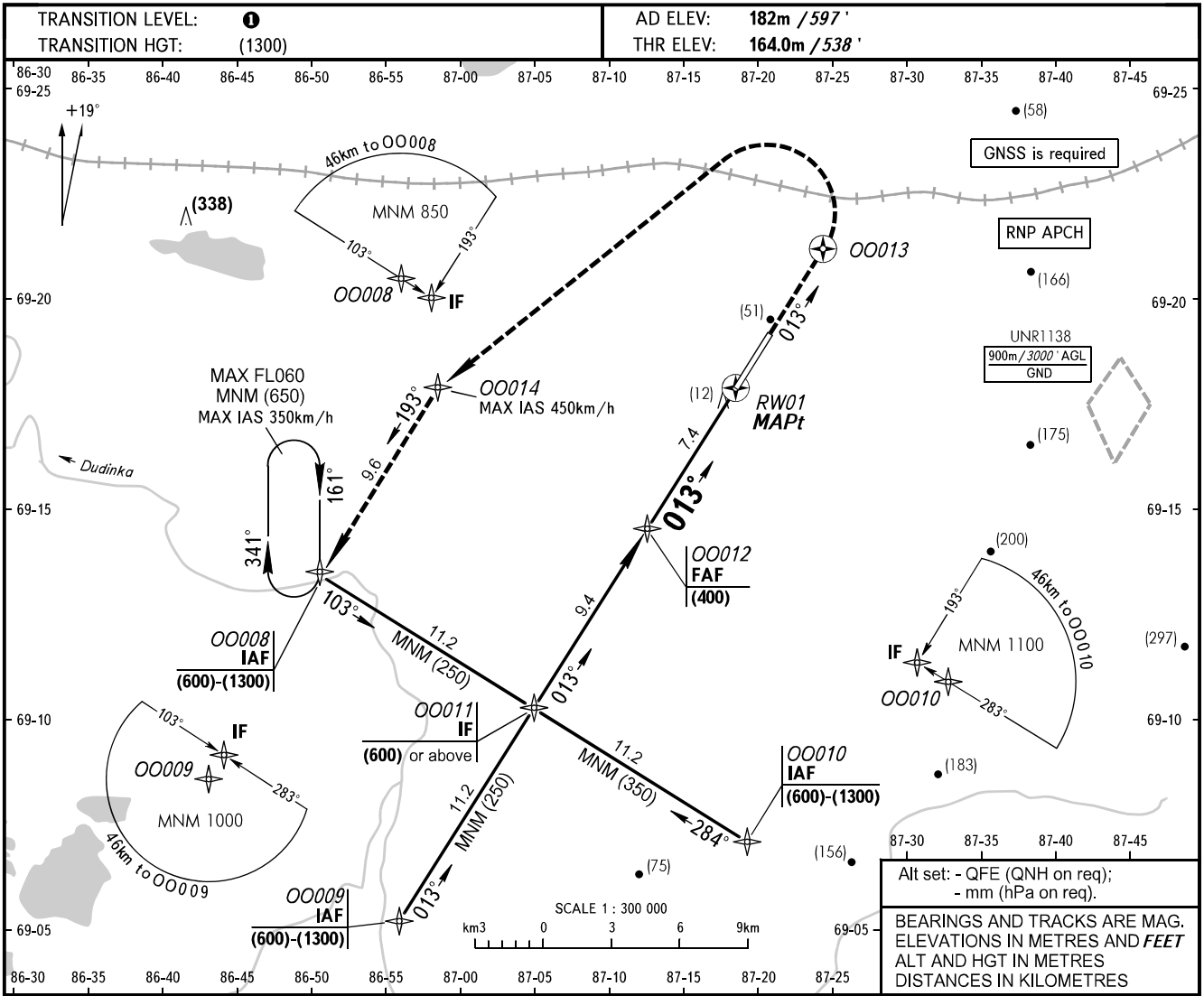


**INSTRUMENT
APPROACH
CHART - ICAO**

NORILSK RADAR	120.400
NORILSK PRECISION	118.300
NORILSK START	118.300

NORILSK, RUSSIA
ALYKEL
RNAV RWY 01

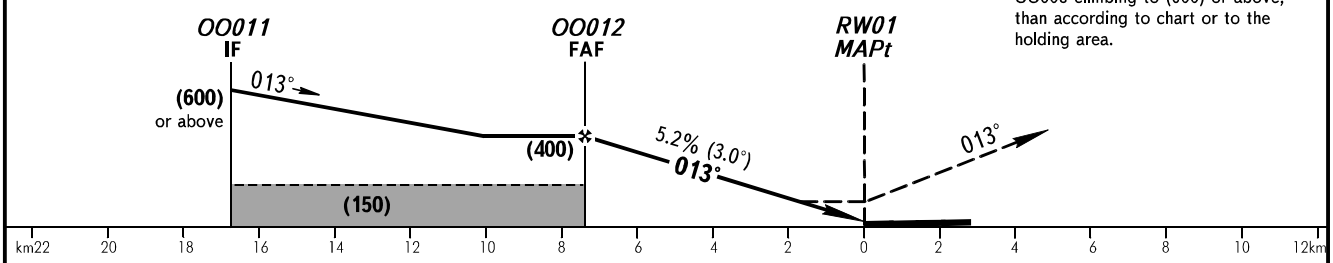


DIST to RW01	7.4	6.0	4.0	2.0
HEIGHT	(400)	(330)	(225)	(120)

Alt set: - QFE (QNH on req);
- mm (hPa on req).

BEARINGS AND TRACKS ARE MAG.
ELEVATIONS IN METRES AND FEET
ALT AND HGT IN METRES
DISTANCES IN KILOMETRES

MISSED APPROACH
Climb on track 013° to OO013
turn LEFT to OO014, then to
OO008 climbing to (600) or above,
then according to chart or to the
holding area.



OCA(H)		A	B	C	D
Straight-in Approach	LNAV	255(90)	255(90)	255(90)	255(90)
Circling		305(120)	335(150)	365(180)	395(210)

TRANSITION LEVEL:
- FL060 when QFE is 744mm mercury column or above;
- FL070 when QFE is 717mm mercury column or above,
but less than 744mm mercury column;
- FL080 when QFE is less than 717mm mercury column.

WARNING
MAPt at RW01. Timing not authorized
for defining MAPt.

GROUND SPEED	km/h	150	180	210	240	270	300	330	360	390
RATE OF DESCENT	m/s	2.2	2.6	3.0	3.5	3.9	4.3	4.8	5.2	5.6

CHANGE: New chart